

INSTRUCTIONS

1. Original and/or subsequent record used to evaluate the corner position.
2. Description of evidence found, note discrepancies in the record, state method of establishing lost or obliterated corners.
3. Description of monument and accessories set to perpetuate the corner position.
4. Sketch of corner, show all pertinent data which can best be shown in a sketch example, corner marking, topography ties, position of accessories, etc.
5. Certification must be signed and sealed by Land Surveyor registered in the State of Montana.
6. Fill in Cross Index & Section Diagram at bottom of sheet.

CERTIFIED CORNER RECORDATION

1/4 Corner Section 25 T. 7 N. R. 14 W. P.M.M. Granite County

ORIGINAL RECORD: (1873 G.L.O.) Not recovered.

SUBSEQUENT RECORD: (1970 B.L.M.)

Set an iron post, 30 ins. long, 2 1/2 ins. diam., 24 ins. in the ground, with brass cap mkd. [as shown below] from which:

A fir, 16 ins. diam., bears S. 25 1/2° W., 55 lks. dist., mkd. 1/4 S25 BT.

Cor. No. 1, Mineral Survey No. 2205, Basin Lode, hereinafter described, bears S. 0° 24' W., 7.530 chs. dist.

Cor No. 1 Mineral Survey No. 10892, North Star Lode, monumented with an iron post, 2 ins. diam., firmly set with 6 ins. above ground with brass cap mkd. N S 1-10892, bears N. 10° 55' W., 20.069 chs. dist.

EVIDENCE FOUND: Found 3 1/4" Brass Cap, 0.5' above ground in mound of stone, from which:
A Ponderosa pine, 21 ins. diam., scribing visible, bears S25°W, 36.4 feet dist.

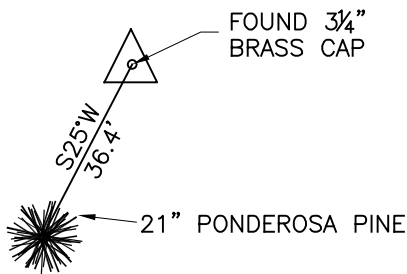
PERPETUATION: Placed MARLS tag on 21 ins. diam. pine.

Located on a 30% west facing slope.

Date of Survey: October, 2009.



NAD 83 coordinates for this corner:
Latitude = 46°19'52.05279"N Longitude = 113°17'07.37117"W
NOTE: These coordinates are to be used as a search tool only.



(Not to Scale)
SKETCH OF CORNER

CERTIFICATION

I, Steve Cummings
certify the information shown herein is true and correct.

Signature Ground Party Chief

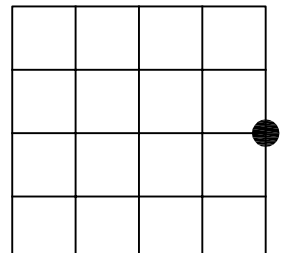
I, Kurt A. Luebke
certify that this Corner Record correctly represents work performed by me or under my direction in compliance with the "Corner Recordation Act" (70-22-101, et seq., M.C.A.)

Signature of Surveyor & Seal

Date: 10-27-2009 Reg. No. 13237 S

Employer: DJ&A P. C.

Sec. 25



● - corner this sheet

Cross Index No. T-25 T. 7 N. R. 14 W. PMM