

**CERTIFIED LAND CORNER RECORDATION**

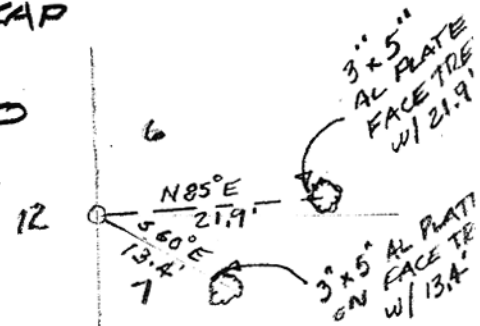
DESCRIPTION OF CORNER EVIDENCE FOUND, AND ORIGINAL RECORD (IF KNOWN)

*No EVIDENCE OF ORIGINAL CORNER FOUND, LOCATION DESTROYED BY USE OF SMALL DUMP,  
FOUND ORIGINAL BEARING TREES TO EAST*

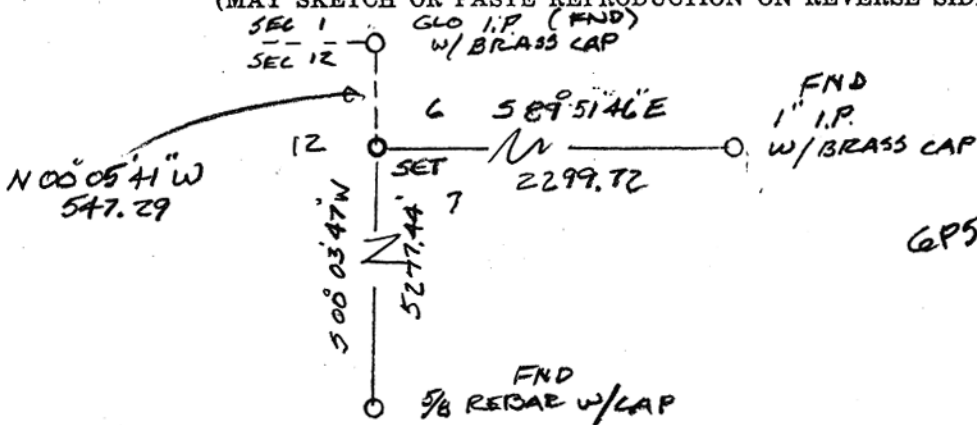
DESCRIPTION OF MONUMENT AND ACCESSORIES ESTABLISHED TO PERPETUATE THE ORIGINAL LOCATION OF THIS CORNER:

*SET 5/8" x 18" REBAR W/ 2" ALUMINUM CAP FROM LOCATION DETERMINED BY BEARING TREES, LOCATION OF GLO BC TO NORTH*

Date of work: *3.16.05*



SKETCH, WITH COURSE AND DISTANCE TO ADJACENT CORNERS IF DETERMINED IN THIS SURVEY. (MAY SKETCH OR PASTE REPRODUCTION ON REVERSE SIDE.)



Surveyor's Seal



I, LESLIE D. JONES certify that the information shown herein is true and correct.

*"DECEASED"*

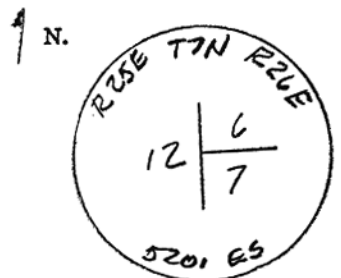
Signature of Ground Party Chief

I, JAMES L. FLETCHER certify that I have carefully performed or reviewed the work done on the diagrammed corner as reported on this recordation form and approve the same.

*James L. Fletcher*  
Signature of Surveyor

5201 ES  
Registration Number

DIAGRAM OF CORNER:



= Corner recorded on the sheet

Office of Clerk and Recorder, Count

265280 Fee \$  
MUSSELSHELL COUNTY  
Recorded 04/04/2007 At 10:18 AM  
Jane E Mang, Clerk and Recorder  
By Neelma Mueggen Deputy

This "corner record" was filed for :

ed on the cross-index plat and is

assigned page No....., i.

County Official

Cross Index No E-1 T 7 R 26 Mer.