

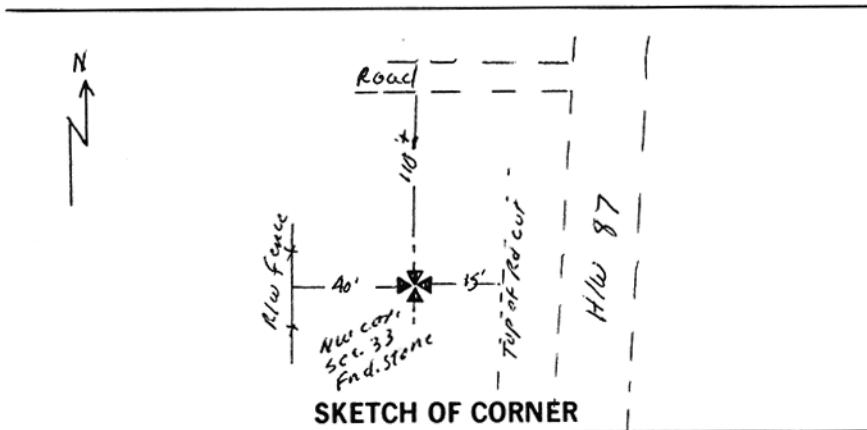
INSTRUCTIONS

1. Original and/or subsequent record used to evaluate the corner position.
2. Description of evidence found, note discrepancies in the record, state method of establishing lost or obliterated corners.
3. Description of monument and accessories set to perpetuate the corner position.
4. Sketch of corner, show all pertinent data which can best be shown in a sketch example, corner marking, topography ties, position of accessories, etc.
5. Certification must be signed and sealed by Land Surveyor registered in the State of Montana.
6. Fill in Cross Index & Section Diagram at bottom of sheet.

CERTIFIED CORNER RECORDATION

Corner N.W. Sec. 33 T. 7 N R. 26E P.M.M. MUSSELSHELL County

1. ORIGINAL RECORD, 1904: Set a sandstone 24 x 15 x 3 ins., 18 ins. in the ground marked with 1 notch on the S. and 4 on E edges.
2. Found sandstone 15 x 3 in. 6 inches above the ground 3 visible notches on east side and 1 on south side. No bearing trees were found.
3. A 12" pine with Al. sign marked with section numbers and T.7N, R.26E bears S. 39° E., 6.6 ft. Corner is set at east end of ancient east-west fence and 40' east of west highway right of way fence and is 15' west of top of road cut and 110' south of road approach to the west.



CERTIFICATION

1. _____
 certify the information shown herein is true and correct.

Signature of Group Party Chief
STEWART NASH

1. _____
 certify that this Corner Record correctly represents work performed by me or under my direction in compliance with the "Corner Recordation Act" (70-22-101, et seq., M.C.A.)

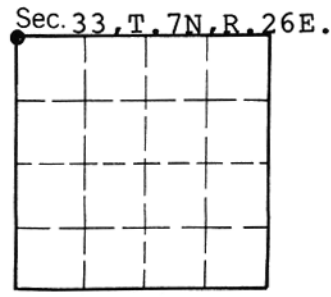
Signature of Surveyor & Seal
Stewart Nash

Date: 5/2/94 Reg. No. 5210S

Employer: SELF

Office of Clerk and Recorder, County of Musselshell. This "corner record" was filed for record on Nov. 1, 1994 9:35 AM was noted on the cross-index plat and is assigned page No. _____, in book No. _____

JANE E. MANG
Norma M. Weigmann
 County Official



Cross Index No. V-9 T. 7N R. 26E PMM

• - corner this sheet