

CERTIFIED CORNER RECORDATION

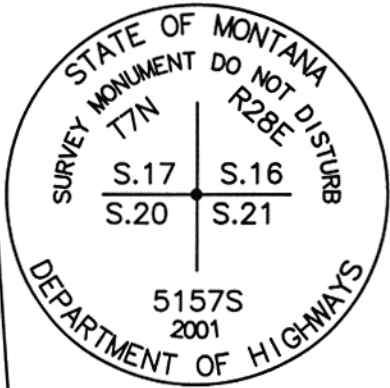
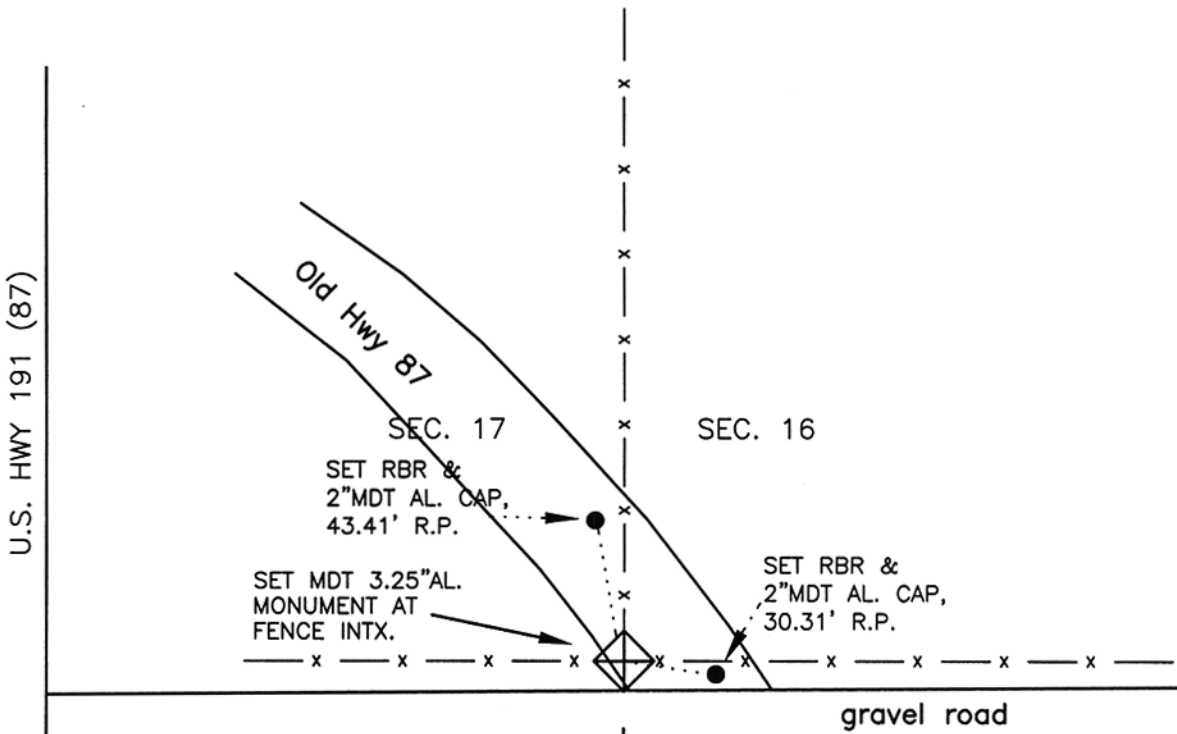
Corner SE Sec. 17 T.7 N. R.26 E. P.M.M. MUSSELSHELL County

ORIGINAL RECORD: SET A SANDSTONE 18"x9"x3", 12" IN THE GROUND MARKED WITH 3 NOTCHES ON S. AND 4 NOTCHES ON E. EDGES AND RAISED A MOUND OF STONE ALONGSIDE, W. OF CORNER.

EVIDENCE FOUND: NO EVIDENCE OF ORIGINAL MONUMENT OR ACCESSORIES FOUND. CALCULATED POSITION FALLS ON N. EDGE OF ROAD FILL AT "T" INTERSECTION OF FENCES, E-WxN. FENCES HAVE OLD POSTS. DOUBLE PROPORTION POSITION FALLS 3.5 FT. NORTH OF FENCE INTERSECTION. ACCEPTED FENCE INTERSECTION AS BEST EVIDENCE OF CORNER POSITION.

RE-ESTABLISHMENT: ACCEPTED FENCE CORNER AS THE BEST EVIDENCE OF THE CORNER POSITION.

PERPETUATION: SET STD MDT 2"x30"x3.25" ALUM MONUMENT, MARKED AS SHOWN:



SKETCH OF CORNER

CERTIFICATION

I, JAMES D. LEHMAN
certify the information shown herein is true and correct
James D. Lehman
Signature Ground Party Chief

I, DANIEL W. MCGEE
certify that this Corner Record correctly represents work performed by me or under my direction in compliance with the "Corner Recordation Act" (70-22-101, et seq., M.C.A.)
Daniel W. McGee
Signature of Surveyor & Seal
Date: 6/7/02 Reg. No. 5157 S
Employer: HARP ENGINEERING INC.

Office of Clerk and Recorder, County of MUSSELSHELL. This "corner record" w/ 256222 Fee \$.00
was noted MUSSELSHELL COUNTY
By Jane E Mang, Clerk and Recorder _____, in
book No. Qualith B Hawkins Deputy _____
County Official

Sec. 17

Cross Index No. N 9 T. 7 N. R. 26 E. PMM

● - Corner this sheet