

INSTRUCTIONS

1. Original and/or subsequent record used to evaluate the corner position.
2. Description of evidence found, note discrepancies in the record, state method of establishing lost or obliterated corners.
3. Description of monument and accessories set to perpetuate the corner position.
4. Sketch of corner, show all pertinent data which can best be shown in a sketch example, corner marking, topography lies, position of accessories, etc.
5. Certification must be signed and sealed by Registered Land Surveyor in State of Montana.
6. Fill in Cross Index & Section Diagram at bottom of sheet.

80242

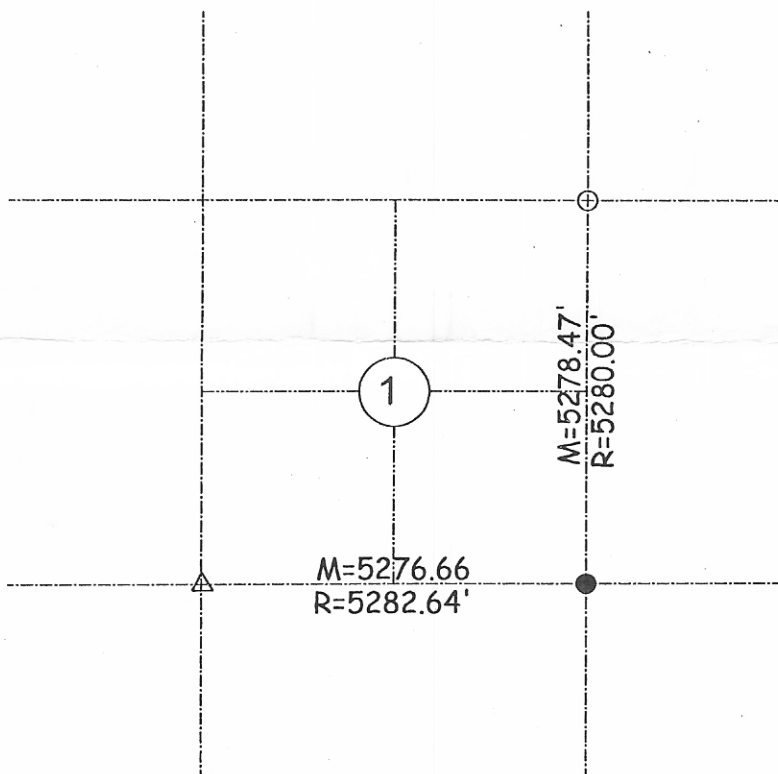
BOOK

1 PAGE 925

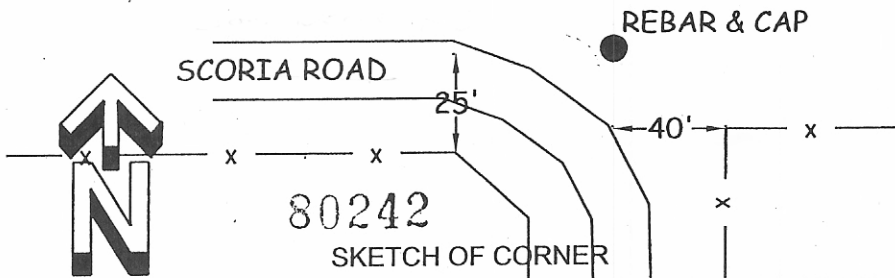
CERTIFIED CORNER RECORDATION

Corner SE SECTION 1 T. 7N R. 58E P.M.M. FALLON County

1. SET A SANDSTONE 18X16X4 INS., WITH A PITS AND MOUND.
2. SET 40 FEET WEST AND 25 FEET NORTH OF FENCE LINES.
3. SET A 1/2" X 18" REBAR AND ALUMINUM CAP MARKED 11705LS AS SHOWN HERE IN.



- X = PK NAIL
- △ = BRASS OR ALUMN. CAP
- = REBAR & CAP SET
- = PIN FOUND OR SET
- = STONE



CERTIFICATION

I, _____
 certify the information shown herein is true and correct.

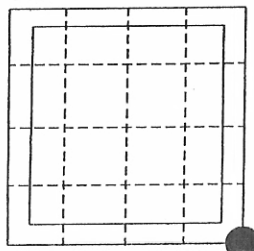
Signature Ground Party Chief
JOHN PAULSON
 JOHN R.

I, _____
 certify that this Corner Record correctly represents work performed by me or under my direction in compliance with the "Corner Recordation Act" (70-2-101, et seq., M.S.A.)

Signature of Surveyor Seal
John Paulson 11705LS
 REGISTERED PROFESSIONAL LAND SURVEYOR

Date: 27-02-2002
 Employer: BROSS ENGINEERING INC.

Office of Clerk and Recorder, County of Fallon This "corner record" Sec. 1
 was filed for record on the 17th day of April 20, 02, @ 11:45 AM, was noted on the cross-index plot and
 is assigned page No. 925, in book No. 1 *Mary Lee Niemy*
 Fee: N/C County Official *Mary Lee Niemy*



BOOK 1 PAGE 925

Cross Index No. E25 T. 7N R. 58E P.M.M.
E-1 7 59