

1. Original and/or subsequent record used to evaluate the corner position.
2. Description of evidence found, note discrepancies in the record, state method of establishing lost or obliterated corners.
3. Description of monument and accessories set to perpetuate the corner position.
4. Sketch of corner, show all pertinent data which can best be shown in a sketch example, corner marking, topography ties, position of accessories, etc.
5. Certification must be signed and sealed by Land Surveyor registered in the State of Montana.
6. Fill in Cross Index & Section Diagram at bottom of sheet.

South Quarter
 Corner Section 17 T. 7N R. 59E P.M.M. Fallon County

CERTIFIED CORNER RECORDATION

RECORD

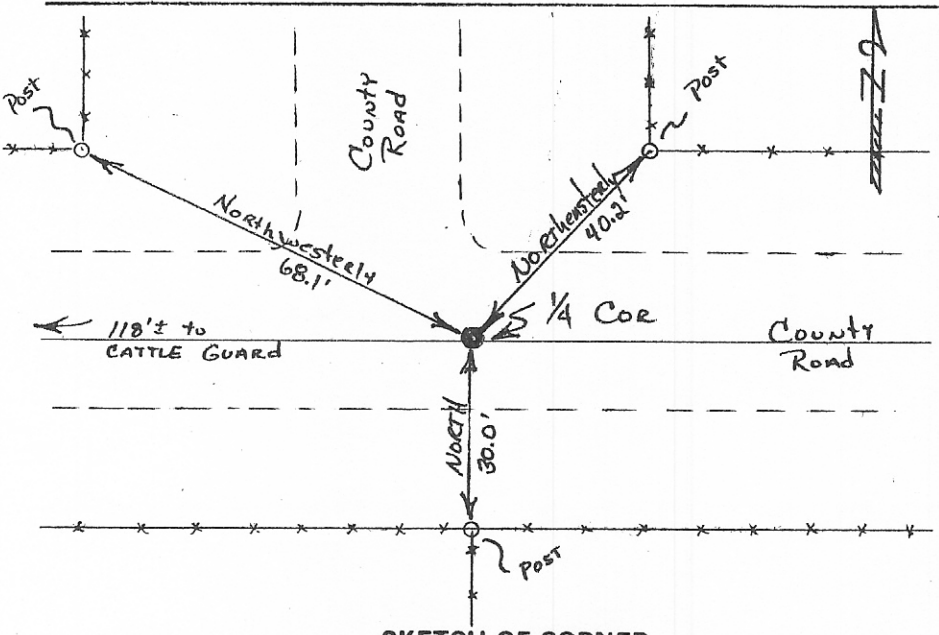
1. 89-57 E. on a partition fine feet. 17 and 20
 40.00 Set trap for eas. cor.
 80.00 Intersect N. and S. fine 1 lb. S. of cor. of 16, 17, 20
 thence S. 79° 57' 16" on true fine feet. 17 and 20
 Over parking land
 1.00 Creek, dry, course N.E., ascend 150 ft. E.S. slope
 26.00 Top of ascent, thence over parking land.
 40.00 Set a marker, 18" x 16" pin, 17" pin in the ground, for true
 cor.; marked 14 on N. face; dig pits 18" x 10" x 10" in
 18" x 16" ft. dist., and pass a plumb of earth, 3" ft.
 base, 17" ft. high N. of cor.
 50.00 Ascend 50 ft. E. slope
 63.00 Spur, extending N., descend 50 ft. W. slope.
 68.00 Foot of descent, thence over parking land.
 80.10 the cor. of 17, 18, 19 and 20
 land, mountainous and parking
 Early sandy beam 2nd path
 No further.
 Mountainous land squashed

All evidence of original corner destroyed by East-West County Road.

Accepted as best evidence to the original position of said corner the intersection of the centerline of the East-West County Road and a North-South fenceline which is the dividing line two property owners in Section 20.

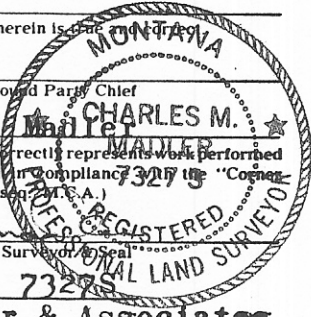
County records show the East-West County Road to be 60 feet in width.

Set 5/8" x 24" rebar with aluminum cap.



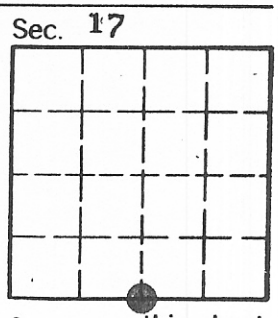
CERTIFICATION

I, _____ certify the information shown herein is true and correct.
 Signature Ground Party Chief
 Charles M. Maile
 I, _____ certify that this Corner Record correctly represents work performed by me or under my direction in compliance with the "Corner Recordation Act" (70-22-101, et seq. M.C.A.)
 Signature of Surveyor
 Date: 11-4-83 Reg. No. 73275
 Wheeler & Associates
 Employer:



Office of Clerk and Recorder, County of Fallon. This "corner record" was filed for record on November 17, 1983 was noted on the cross-index plat and is assigned page No. 61 in book No. 1

Mary Lee Dietz
 County Official



BOOK 1 PAGE 61

• - corner this sheet