

1. ORIGINAL AND/OR SEQUENT RECORD USED TO EVALUATE THE CORNER POSITION.
2. DESCRIPTION OF EVIDENCE FOUND, NOTE DISCREPANCIES IN THE RECORD, STATE METHOD OF ESTABLISHING LOST OR OBLITERATED CORNERS.
3. DESCRIPTION OF MONUMENT AND ACCESSORIES SET TO PERPETUATE THE CORNER POSITION.
4. SKETCH OF CORNER, SHOW ALL PERTINENT DATA WHICH CAN BEST BE SHOWN IN A SKETCH. EXAMPLE, CORNER MARKINGS, TOPOGRAPHY TIES, POSITION OF ACCESSORIES, ETC.
5. CERTIFICATION MUST BE SIGNED AND SEALED BY LAND SURVEYOR REGISTERED IN THE STATE OF MONTANA.
6. FILL IN CROSS INDEX AND SECTION DIAGRAM AT BOTTOM OF SHEET.

CERTIFIED CORNER RECORDATION

BOOK

1 PAGE 598

CORNER East Quarter SEC. 10, T. 7 N., R. 59 E., P.M.M., Fallon COUNTY, MT

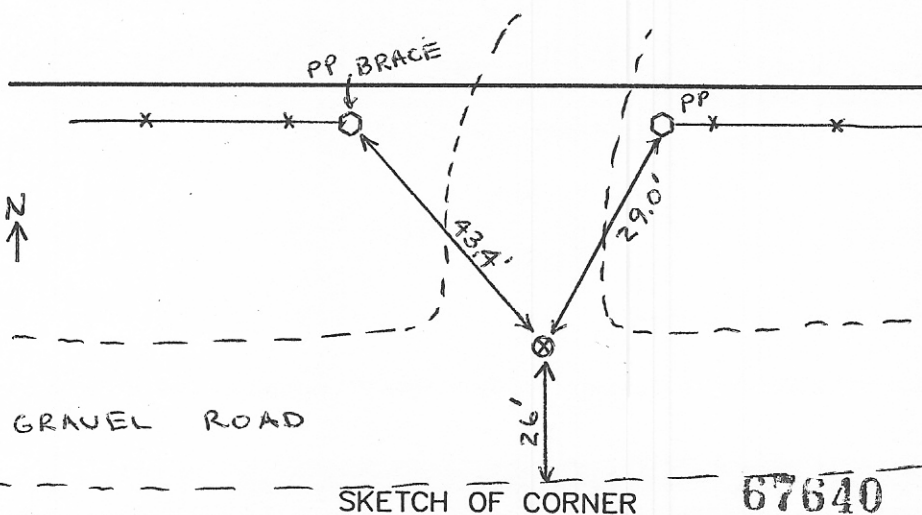
ORIGINAL RECORD : Surveyed by Robert F. Scott & Harry E. Fearnall in 1908.

Set a sandstone 16x12x10 ins., 11 ins. in the ground for 1/4 Sec. Cor. marked 1/4 on W. face; dig pits, 18x18x12 ins. N and S. of stone 3 ft. dist.; and raise a mound of earth, 3 3/4 ft. base, 1 1/2 ft. high, W. of cor.

EVIDENCE FOUND: No evidence of original corner, position of corner falls in roadway.

SET: Re-established 1/4 corner by single proportionate measurement from the found section corner to the south and the re-established section corner to the north. At the corner point set a 5/8"x18" rebar with a 2" alum. cap 6" below gravel roadway. Cap stamped as shown

1/4
|
S 10 | S 11
|
1995 7155LS



CERTIFICATION

I, Quinn Wright
certify the information shown is true and correct.

[Signature]
Signature of Ground Party Chief

I, Jimmie L. Brewer
certify that this Corner REBAR correctly represents work performed by me or under my direction in compliance with the "Corner Recordation Act" (70-22-401 et seq., M.C.A.)

[Signature]
Signature of Surveyor & Seal

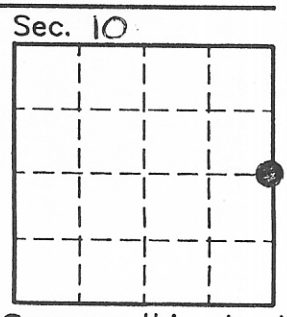
Date 11-10-1995 Reg. No. 7155LS

Employer: HKM Associates

Office of Clerk and Recorder, County of Fallon. This "corner record" was filed for record on November 13, 1995 @ 1:30 PM was noted on the cross-index plat and is assigned page No. 598-599, in book No. 1

[Signature]
County Official

Fee: N/C BOOK 1 PAGE 598



Cross Index No. G-17 T. 7N R. 59E P.M.M.