

INSTRUCTIONS

1. Original and/or subsequent record used to evaluate the corner position.
2. Description of evidence found, note discrepancies in the record, state method of establishing lost or obliterated corners.
3. Description of monument and accessories set to perpetuate the corner position.
4. Sketch of corner, show all pertinent data which can best be shown in a sketch example, corner marking, topography ties, position of accessories, etc.
5. Certification must be signed and sealed by Land Surveyor registered in the State of Montana.
6. Fill in Cross Index & Section Diagram at bottom of sheet.

CERTIFIED CORNER RECORDATION

Corner SE Cor. Sec. 23 T. 7 N., R. 59 E, P.M.M. FALLON County

Original Record: GLO 1907 - 80.00 Chains: Set a Sandstone, 26 x 24 x 4 ins., 19 ins., in the ground for cor. of secs. 23, 24, 25 and 26, marked with 2 notches on S. and 1 notch on E. edges; dig pits, 18 x 18 x 12 ins., in each sec., 4 1/2 ft. dist.; and raise a mound of earth, 4 ft. base, 2 ft. high, W. of cor.

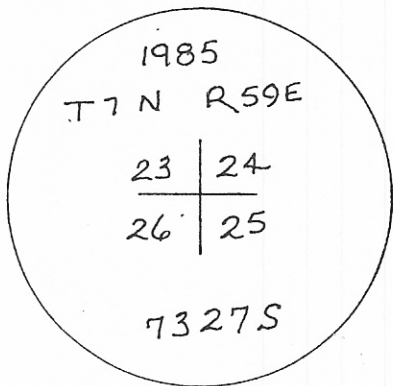
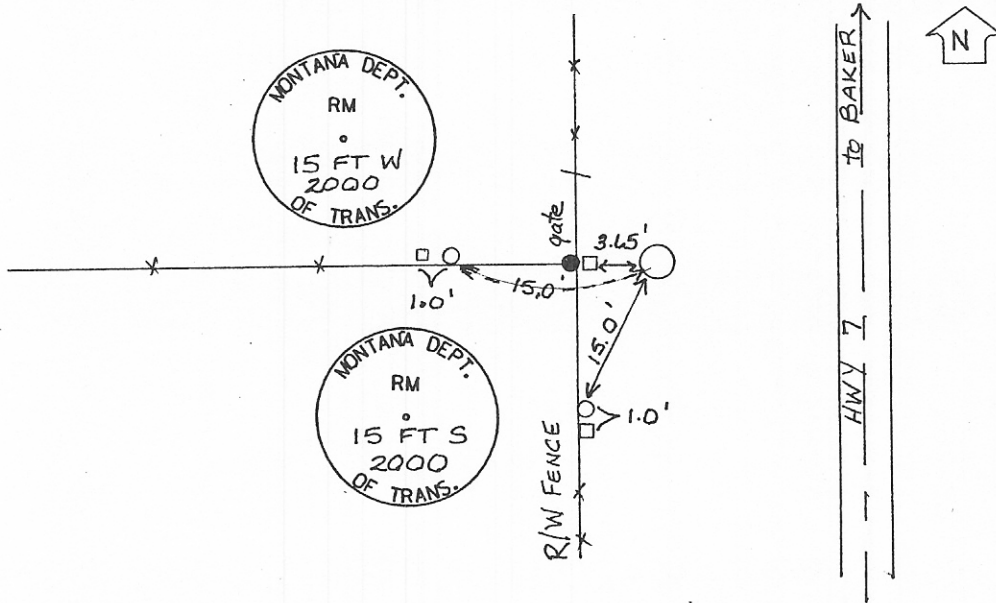
Subsequent Record: Certified Corner Recordation, Doc. No. 47377, Pg. 225-226, Bk. 1, Fallon County; 7327S: Set a 3 in. monument marked 1985

23|24
26|25

7327S

Found: A 3 in. aluminum cap as described but did not find references monuments as noted in the 1985 corner recordation.

Set: A witness post, a 6 ft. steel u-post with a MDT decal 3.65 ft. west of monument. Also set two reference monuments, each a 2 in. MDT aluminum cap on 5/8 x 24 in. rebar, marked as shown below, and witness posts, each a 1 1/2 x 36 in. steel pipe with a MDT decal, 1 ft. behind the RM's. Stamped T 7 N R59 E on existing monument.



SKETCH OF CORNER

77761

CERTIFICATION

I, _____, certify the information shown herein is true and correct.

Signature of Ground Party Chief

I, Carole E. Sandin certify that this Corner Record correctly represents work performed by me or under my direction in compliance with the "Corner Recordation Act" (70-22-201, et seq.)

Carole E. Sandin

Signature of Surveyor & Seal



Date: 7-31-2000

Reg. No. 11004S

Employer: MDT

Office of Clerk and Recorder, County of FALLON. This "corner record" was filed for record on AUGUST 28, 2000 AT 11:30 A.M. was noted on the cross-index plat, and is assigned Page No. 813 in Book No. 1.

Mary Lee Smith
FEE: N/C by _____ County Official

Sec. 23

• — Corner this sheet

BOOK 1 PAGE 813

Cross Index No. R-21 T. 7 N. R. 59 E., P.M.M.