

36498

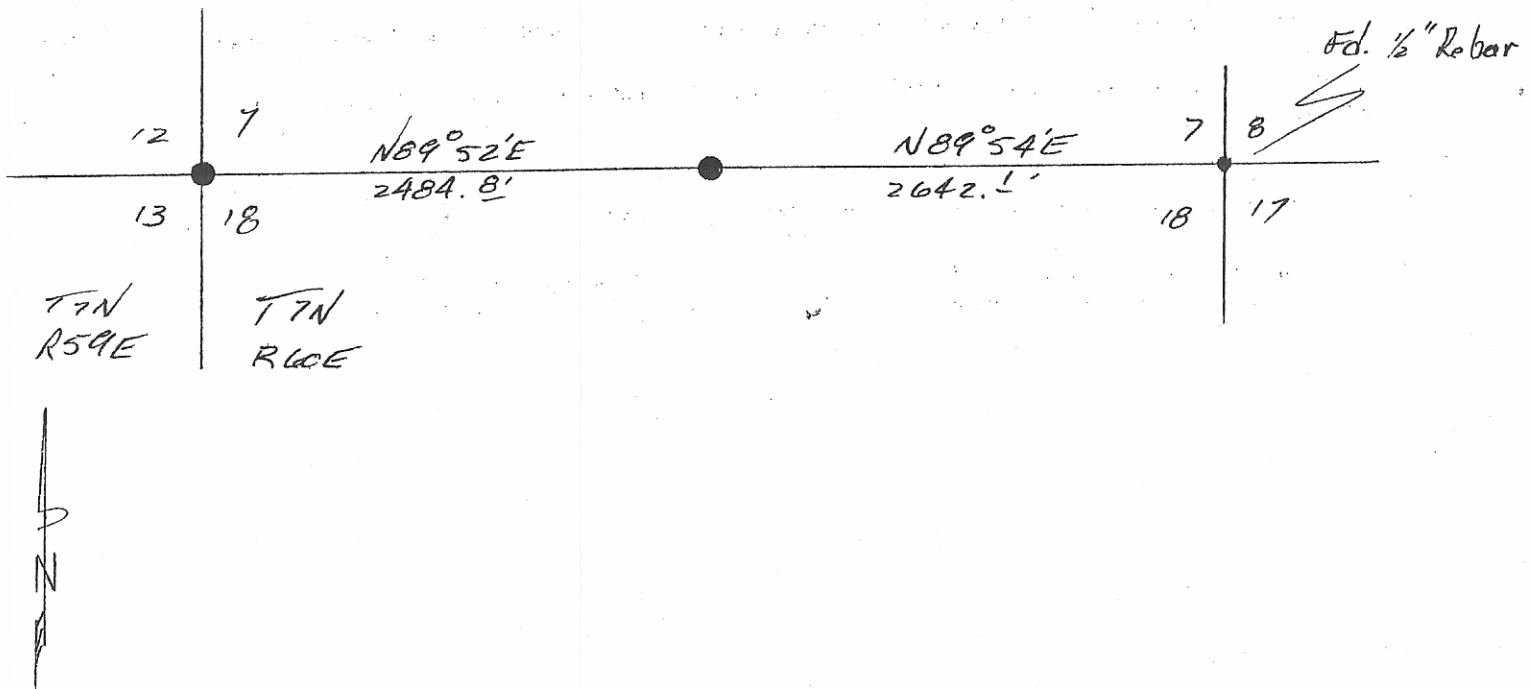
INSTRUCTIONS

1. Original and/or subsequent record used to evaluate the corner position.
2. Description of evidence found, note discrepancies in the record, state method of establishing lost or obliterated corners.
3. Description of monument and accessories set to perpetuate the corner position.
4. Sketch or corner, show all pertinent data which can best be shown in a sketch example, corner marking, topography ties, position of accessories, etc.
5. Certification must be signed and sealed by Registered Land Surveyor in State of Montana.
6. Fill in Cross Index & Section Diagram at bottom of sheet.

CERTIFIED CORNER RECORDATION

Corner North 1/4 Section 18 T. 7N R. 60E P.M.M. Fallon County

This corner was established by Richard E. Guenzi in 1962, single proportion was used. On June 23, 1982 we found a 3/4x 30" sucker rod set by Shell Oil Co. We set a 1/2"x24" rebar with Aluminum cap along side.



CERTIFICATION

I, \_\_\_\_\_ certify the information shown herein is true and correct.

Signature Ground Party Chief

I, Richard E. Guenzi certify that this Corner Record correctly represents work performed by me or under my direction in compliance with the "Corner Recordation Act" (70-2-101 et seq., M.D.A.)

Richard E. Guenzi  
Signature of Surveyor & Seal

Date: 7-6-82 Reg. No. 118886S

Employer: Guenzi Surveys

36498

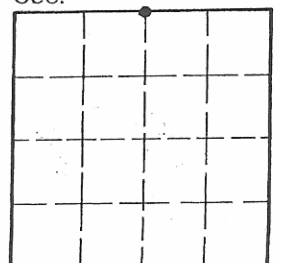
SKETCH OF CORNER

Office of Clerk and Recorder, County of Fallon. This "corner record" was filed for record on the July 30th day of 1982. Received in our office July 16, 1982 was noted on the cross-index plat and is assigned page No. 40, in

book No. 1

Mary Lee Dietz  
County Official

Sec. 18



• - corner this sheet

BOOK 1 PAGE 40

Cross Index No. J 11-3 T. 7N R. 60E P.M.M.