

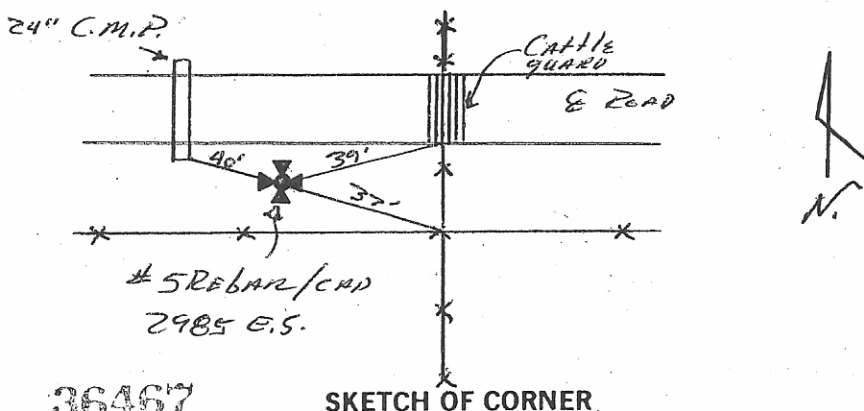
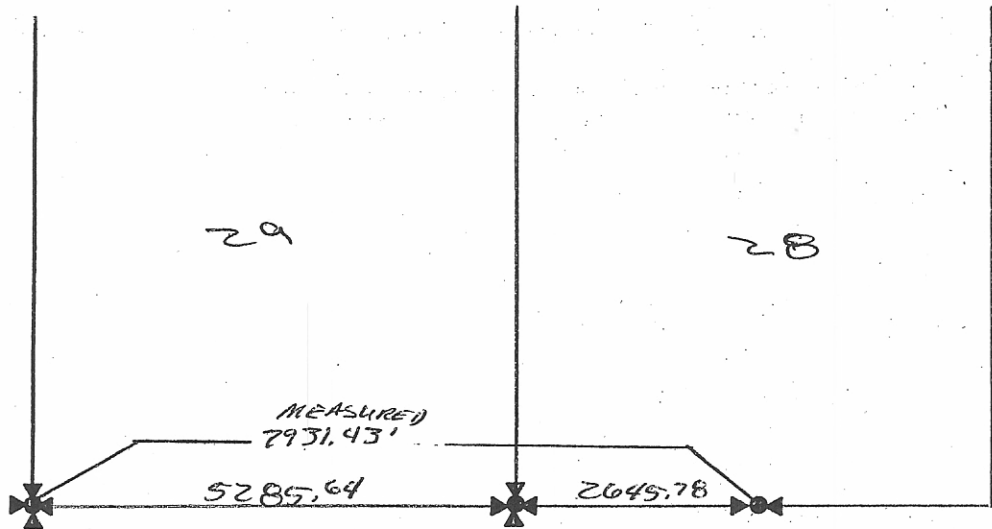
INSTRUCTIONS

1. Original and/or subsequent record used to evaluate the corner position.
2. Description of evidence found, note discrepancies in the record, state method of establishing lost or obliterated corners.
3. Description of monument and accessories set to perpetuate the corner position.
4. Sketch or corner, show all pertinent data which can best be shown in a sketch example, corner marking, topography ties, position of accessories, etc.
5. Certification must be signed and sealed by Registered Land Surveyor in State of Montana.
6. Fill in Cross Index & Section Diagram at bottom of sheet.

CERTIFIED CORNER RECORDATION

Corner Southeast, Section 29 T. 7N R. 60E P.M.M. Fallon County

1. I used distances and bearings from the original G.L.O. Township plat.
2. I used an original stone at the Southwest corner of Section 29 which I accepted as the corner from previous survey methods. I measured the distance between the stone and an existing iron rod at the South $\frac{1}{4}$ corner Section 28 which I used in previous survey work. That total distance between the two points was within $8' \pm$ of that called for the G.L.O. plat. I used the single proportion measurement method to establish the Southeast corner of Section 29.
3. At the Southeast corner of Section 29 I set a #5 rebar with an aluminum cap stamped Interstate Engineering 2985 E.S. approximately 1' below the ground. The monument fall approximately 30' West of a North-south fence line and 20' South of a East-west road. (See sketch)



CERTIFICATION

I, Jerome Kramer
 certify the information shown herein is true and correct.

Jerome Kramer
 Registered Land Surveyor in Charge

I, Ross W. Lane
 certify that this corner record correctly represents work performed
 by me or under my direct supervision in compliance with the "Corner
 Recordation Act" (70-22-101 et seq., M.I.C.A.)

Ross W. Lane
 Registered Land Surveyor

Date: 11/11/81 E.S.

Employer: _____

36467

SKETCH OF CORNER.

Office of Clerk and Recorder, County of Fallon. This "corner record" was filed for record on the July 30, day of 1982
 Received in our office Dec. 21, 1981
 was noted on the cross-index plat and is assigned page No. 9, in
 book No. 1

Maudee Dietz
 County Official

Sec. 29
