

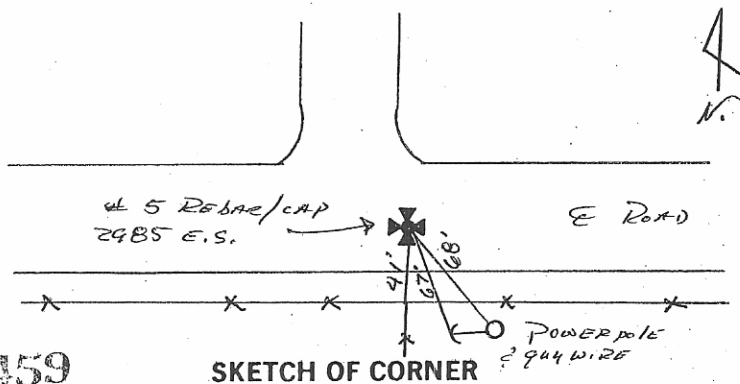
INSTRUCTIONS

1. Original and/or subsequent record used to evaluate the corner position.
2. Description of evidence found, note discrepancies in the record, state method of establishing lost or obliterated corners.
3. Description of monument and accessories set to perpetuate the corner position.
4. Sketch or corner, show all pertinent data which can best be shown in a sketch example, corner marking, topography ties, position of accessories, etc.
5. Certification must be signed and sealed by Registered Land Surveyor in State of Montana.
6. Fill in Cross Index & Section Diagram at bottom of sheet.

CERTIFIED CORNER RECORDATION

Corner Southeast Section 5 T. 7N R. 60E P.M.M. Fallon County

1. I used the original G.L.O. Township plat for bearings and distances.
2. At the Southeast corner of Section 5 I set a #5 rebar in the center of an East-West gravel road, and in line with a fence line running south. A nearby rancher believes that fenceline is on or very near the Section line. I then traversed from that point to an existing #5 rebar at the Southwest corner of Section 5. That distance was approximately 20' longer than that called for on the G.L.O. plat. The monument fits physical evidence quite well, therefore I accepted it as the corner.
3. At the Southeast corner of Section 5 I set a #5 rebar with an aluminum cap stamped Interstate Engineering 2985 E.S. approximately 8" below the ground. (See sketch).



36459

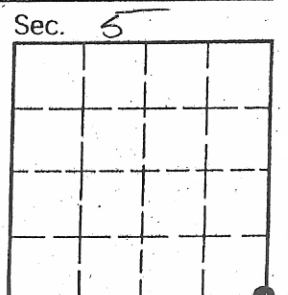
SKETCH OF CORNER

CERTIFICATION

I, Jerome Kramer  
 certify the information shown herein is true and correct.  
Jerome Kramer  
 Signature of the Party Chief  
Ross Milne  
 certify that this corner correctly represents work performed  
 by me under my direction in compliance with the "Corner  
 Recordation Act" (70-21-101, et seq., M.C.A.)  
2985 ES  
 Signature of Registered Professional Engineer & Land Surveyor  
 Date: 12/21/82  
 Employer: \_\_\_\_\_

Office of Clerk and Recorder, County of Fallon. This "corner record" was filed for record on the July 30 day of 1982. Received in our office Dec. 21, 1981 was noted on the cross-index plat and is assigned page No. 1, in book No. 1

Mary Lee Ritz  
 County Official



BOOK 1 PAGE 1

Cross Index No. E-9 T. 7N R. 60E P.M.M.

• corner this sheet