

INSTRUCTIONS

1. Original and/or subsequent record used to evaluate the corner position.
2. Description of evidence found, note discrepancies in the record, state method of establishing lost or obliterated corners.
3. Description of monument and accessories set to perpetuate the corner position.
4. Sketch of corner, show all pertinent data which can best be shown in a sketch example, corner marking, topography ties, position of accessories, etc.
5. Certification must be signed and sealed by Land Surveyor licensed in the State of Montana.
6. Fill in Cross Index & Section Diagram at bottom of sheet.

PLSS CORNER RECORD

Corner 3 MS 7401 T. 8N, R. 6W, P.M.M. Powell County

Record:

1904 - Original G.L.O. Survey by, Robert F. Scott, U.S. Deputy Mineral Surveyor

Set a granite stone 6 x 8 x 24 ins. 14 ins. deep marked 3-7401 for Cor. No. 3.
Raised a mound of stone alongside.

Found:

Find a granite stone, 5" x 7" x 8" above ground, firmly set and marked '3 7401' on the S. face, and a cross on top.

- A mound of stone, 4 ft. base, 1 1/2 ft. high is alongside N. edge of stone.
- A dead standing pine 7" diam. bears S. 8 1/2 ft. with a *Land Survey Monument* sign attached.

Perpetuation:

- Paint the stone red.
- Set a galvanized steel post 2 ft. southerly on line 3-4 with *Property Boundary* and *Land Survey Monument* decals.

Geographic Coordinates

NAD83(2011)
46° 26' 43.0105"N
112° 18' 56.8368"W



See Diagram on Back

CERTIFICATION

I, Ryan J. Brown
certify the information shown herein is true and correct.

[Signature]
Signature Ground Party Chief

I, Rebecca Sitch
certify that this Corner Record correctly represents work performed by me or under my direction in compliance with the "Corner Recordation Act" (20-22-101 et seq., MCA)

[Signature]
Signature of Surveyor & Seal

Date: 4-5-16 Lic. No. 10565LS

Employer: USDA Forest Service

SKETCH OF CORNER

Office of Clerk and Recorder **174261 Fee: \$0.00 Bk Pg**
record" was filed for record **POWELL COUNTY** Filed **7/14/2016** At **9:30 AM**
was noted on the cross-index **JODY WALKER, Clk & Rcdr By** *[Signature]*
Return To: FILING

County Official

Sec. 14

• — Corner this sheet

Cross Index No. *** T. 8N R. 6W, PMM

RETRACEMENT DIAGRAM

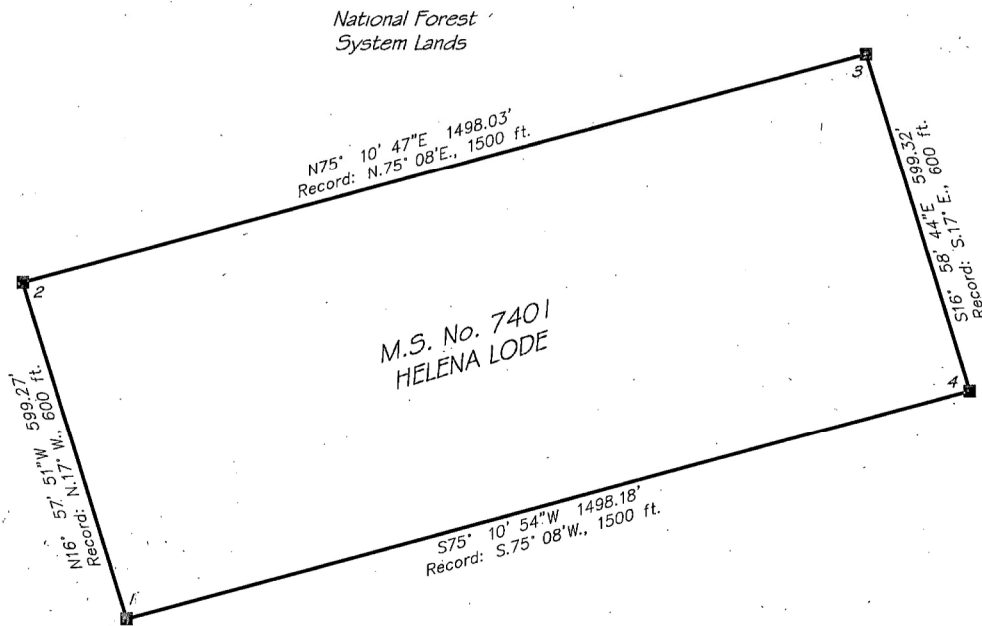
M.S. NO. 7401, LOCATED WITHIN SECTION 14, T.8N., R.6W., PRINCIPAL MERIDIAN, MONTANA
POWELL COUNTY MONTANA

BASIS OF BEARINGS:

Bearings are based upon the geodetic meridian from survey grade GPS observations taken at a random point. A local Transverse Mercator projection was established with an origin at Corner 2 of MS 7401, using a ground scale factor of 1.000334912. At this point, the geodetic forward bearing equals the grid bearing.

METHOD OF SURVEY:

This survey was performed using a survey grade Global Positioning System (GPS), utilizing real-time kinematic radial survey techniques. Redundant measurements were taken on project controlling corners to ensure accuracy.

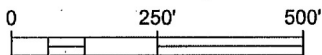


National Forest System Lands



LEGEND

- NFS Boundary Marked/Maintained
- Found Original Stone
- Record — Record Measurement from 1904 Original Survey by Robert F. Scott



U.S. DEPARTMENT OF AGRICULTURE
HELENA-LEWIS & CLARK NATIONAL FOREST
FOREST SERVICE, REGION 1

REVIEWED BY:

Rebecca Sitch
FOREST LAND SURVEYOR

4-5-16
DATE

SURVEYED BY: B.Sitch, R. Brown- June 2015
DRAWN BY: R. Brown - April 2016

RETRACEMENT DIAGRAM

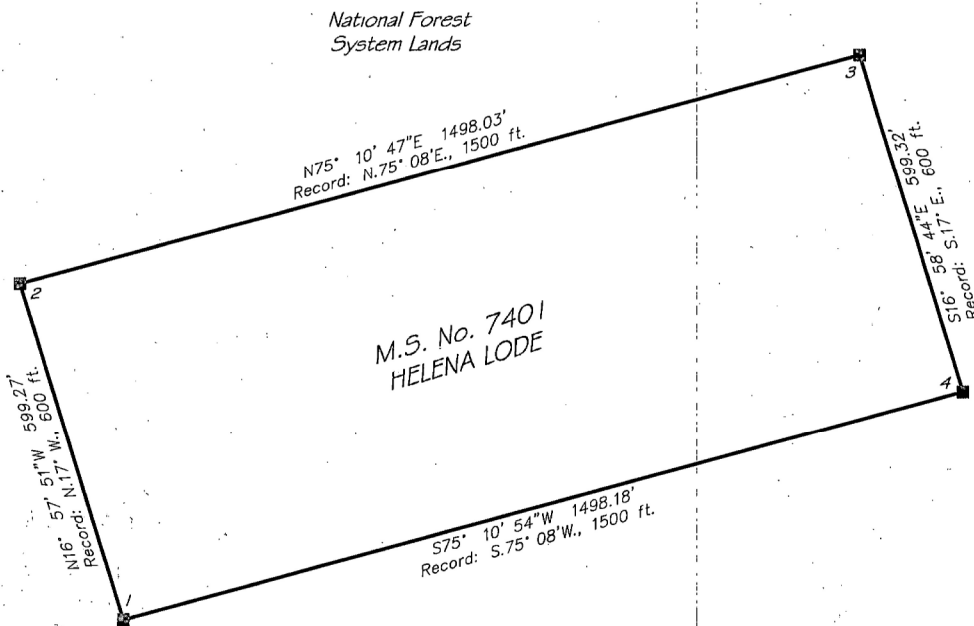
M.S. NO. 7401, LOCATED WITHIN SECTION 14, T.8N., R.6W., PRINCIPAL MERIDIAN, MONTANA
POWELL COUNTY MONTANA

BASIS OF BEARINGS:

Bearings are based upon the geodetic meridian from survey grade GPS observations taken at a random point. A local Transverse Mercator projection was established with an origin at Corner 2 of MS 7401, using a ground scale factor of 1.000334912. At this point, the geodetic forward bearing equals the grid bearing.

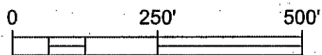
METHOD OF SURVEY:

This survey was performed using a survey grade Global Positioning System (GPS), utilizing real-time kinematic radial survey techniques. Redundant measurements were taken on project controlling corners to ensure accuracy.



LEGEND

- NFS Boundary Marked/Maintained
- Found Original Stone
- Record Record Measurement from 1904 Original Survey by Robert F. Scott



U.S. DEPARTMENT OF AGRICULTURE
HELENA-LEWIS & CLARK NATIONAL FOREST
FOREST SERVICE, REGION 1

REVIEWED BY:

Rebecca Sitch
FOREST LAND SURVEYOR

4-5-16
DATE

SURVEYED BY: B.Sitch, R. Brown - June 2015
DRAWN BY: R. Brown - April 2016