

INSTRUCTIONS

1. Original and/or subsequent record used to evaluate the corner position.
2. Description of evidence found, note discrepancies in the record, state method of establishing lost or obliterated corners.
3. Description of monument and accessories set to perpetuate the corner position.
4. Sketch of corner, show all pertinent data which can best be shown in a sketch example, corner marking, topography ties, position of accessories, etc.
5. Certification must be signed and sealed by Land Surveyor licensed in the State of Montana.
6. Fill in Cross Index & Section Diagram at bottom of sheet.

PLSS CORNER RECORD

Corner 4 MS 7401 T. 8N, R. 6W, P.M.M. Powell County

Record:

1904 - Original G.L.O. Survey by, Robert F. Scott, U.S. Deputy Mineral Surveyor

Set a granite stone 6 x 10 x 24 ins. 15 ins. deep marked 4-7401 for Cor. No. 4.
Raised a mound of stone alongside.

Found:

Find a granite stone, 6" x 12" x 7" above ground, firmly set and marked '4 7401' on the N. face, and a cross on top.

- A mound of stone, 4 ft. base, 2 ft. high is alongside S. edge of stone.
- the original location corner bears approx. S.70°E., 16 ft. and consists of a squared off wooden post 4-1/2" square, 4 ft. long, laying loosely alongside a mound of stone, 4 ft. base, 1 1/2 ft. high.

Perpetuation:

- Paint the stone red.
- Set two galvanized steel posts alongside the corner; one 1 1/2 ft. westerly on line 2-3 with *Property Boundary* and *Land Survey Monument* decals, and the other 2 1/2 ft. northerly with a *Property Boundary* decal.

Geographic Coordinates

NAD83(2011)
46° 26' 37.3541"N
112° 18' 54.3391"W



See Diagram on Back

CERTIFICATION

I, Ryan J. Brown
certify the information shown herein is true and correct.

[Signature]
Signature Ground Party Chief

I, Rebecca Sitch
certify that this Corner Record correctly represents work performed by me or under my direction in compliance with the "Corner Recordation Act" (70-22-101, et seq., MCA)

[Signature]
Signature of Surveyor & Seal

Date: 4-5-16 Lic. No. 10565LS
Employer: USDA Forest Service

SKETCH OF CORNER

Office of Clerk and Recorder
record" was filed for rec
was noted on the cross

174262 Fee: \$0.00 Bk Pg
POWELL COUNTY Filed 7/14/2016 At 9:35 AM
JODY WALKER, Clk & Rcdr By *[Signature]*
Return To: FILING

corner

Sec. 14

County Official

• — Corner this sheet

Cross Index No. *** T. 8N R. 6W, PMM

RETRACEMENT DIAGRAM

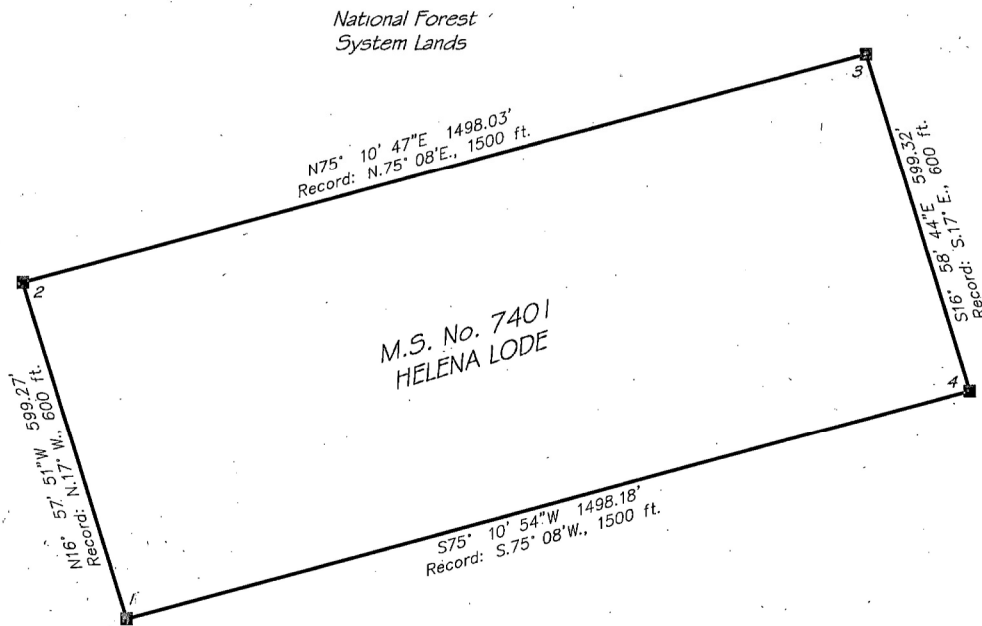
M.S. NO. 7401, LOCATED WITHIN SECTION 14, T.8N., R.6W., PRINCIPAL MERIDIAN, MONTANA
POWELL COUNTY MONTANA

BASIS OF BEARINGS:

Bearings are based upon the geodetic meridian from survey grade GPS observations taken at a random point. A local Transverse Mercator projection was established with an origin at Corner 2 of MS 7401, using a ground scale factor of 1.000334912. At this point, the geodetic forward bearing equals the grid bearing.

METHOD OF SURVEY:

This survey was performed using a survey grade Global Positioning System (GPS), utilizing real-time kinematic radial survey techniques. Redundant measurements were taken on project controlling corners to ensure accuracy.

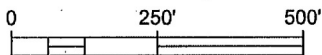


National Forest System Lands



LEGEND

- NFS Boundary Marked/Maintained
- Found Original Stone
- Record: Record Measurement from 1904 Original Survey by Robert F. Scott



U.S. DEPARTMENT OF AGRICULTURE
HELENA-LEWIS & CLARK NATIONAL FOREST
FOREST SERVICE, REGION 1

REVIEWED BY:

Rebecca Sitch
FOREST LAND SURVEYOR

4-5-16
DATE

SURVEYED BY: B.Sitch, R. Brown- June 2015
DRAWN BY: R. Brown - April 2016

RETRACEMENT DIAGRAM

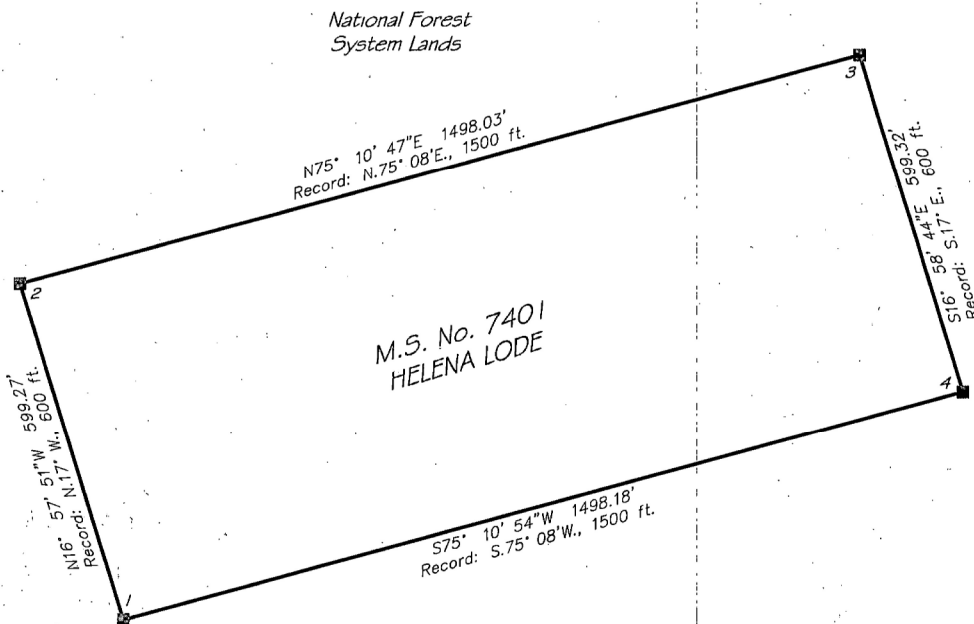
M.S. NO. 7401, LOCATED WITHIN SECTION 14, T.8N., R.6W., PRINCIPAL MERIDIAN, MONTANA
POWELL COUNTY MONTANA

BASIS OF BEARINGS:

Bearings are based upon the geodetic meridian from survey grade GPS observations taken at a random point. A local Transverse Mercator projection was established with an origin at Corner 2 of MS 7401, using a ground scale factor of 1.000334912. At this point, the geodetic forward bearing equals the grid bearing.

METHOD OF SURVEY:

This survey was performed using a survey grade Global Positioning System (GPS), utilizing real-time kinematic radial survey techniques. Redundant measurements were taken on project controlling corners to ensure accuracy.

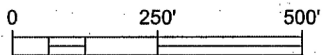


National Forest System Lands



LEGEND

- NFS Boundary Marked/Maintained
- Found Original Stone
- Record Record Measurement from 1904 Original Survey by Robert F. Scott



U.S. DEPARTMENT OF AGRICULTURE
HELENA-LEWIS & CLARK NATIONAL FOREST
FOREST SERVICE, REGION 1

REVIEWED BY:

Rebecca Sitch
FOREST LAND SURVEYOR

4-5-16
DATE

SURVEYED BY: B.Sitch, R. Brown - June 2015
DRAWN BY: R. Brown - April 2016