

INSTRUCTIONS

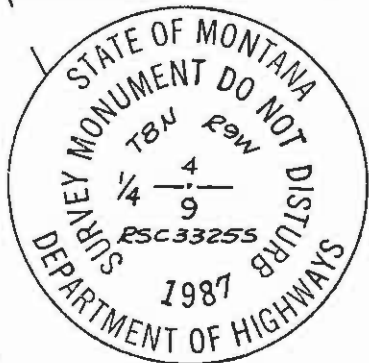
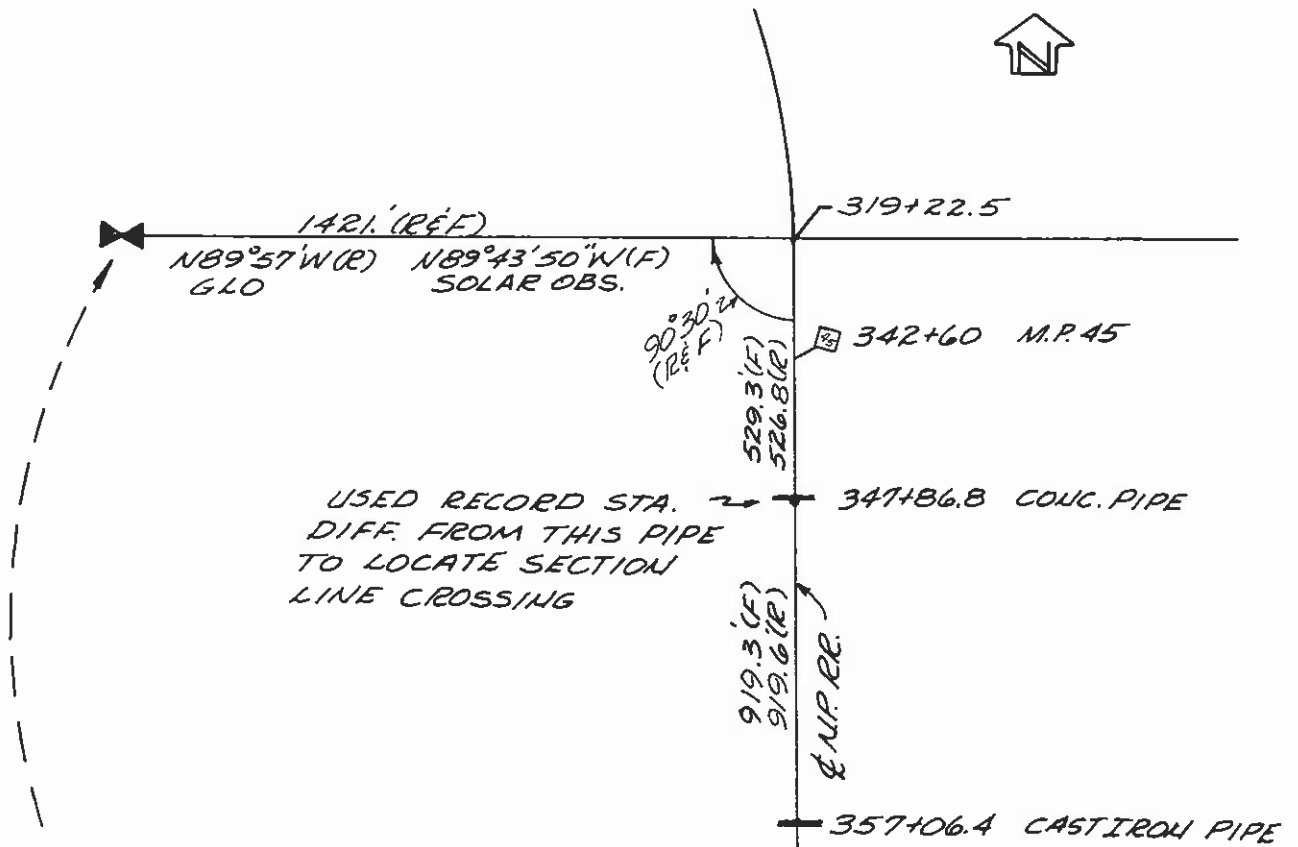
1. Original and/or subsequent record used to evaluate the corner position.
2. Description of evidence found, note discrepancies in the record, state method of establishing lost or obliterated corners.
3. Description of monument and accessories set to perpetuate the corner position.
4. Sketch of corner, show all pertinent data which can best be shown in a sketch example, corner marking, topography ties, position of accessories, etc.
5. Certification must be signed and sealed by Land Surveyor registered in the State of Montana.
6. Fill in Cross Index & Section Diagram at bottom of sheet.

CERTIFIED CORNER RECORDATION

Corner 1/4 4/9 T. 8 N. R. 9 W. P.M.M. Powell County

Record 1868 - Set a post in mound of earth with pits and charred stake as per instructions.

Found 1987 - No evidence of original Corner Monument. As the nearest and best evidence of the corner position, use the Northern Pacific R.R. R/W drawing which shows a tie to the 1/4 corner, see sketch below of R.R. R/W and profile stations used.
 At the corner position, set a 3 1/4"x30" Alum. monument, 30" in the ground, marked as per diagram below, from which:
 The top rail of a jack leg corral fence bears N 09°E, 35.3 feet with MARLS yellow tag.
 The top rail of a jack leg corral fence bears N 86°W, 25.3 feet with MARLS yellow tag.
 The corner falls in center of NW corral of several corrals in cattle loading facility.



SKETCH OF CORNER

CERTIFICATION

I, _____ certify the information shown herein is true and correct.

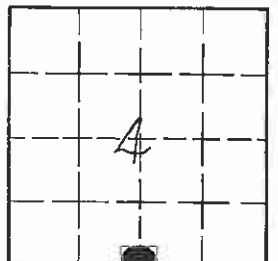
Signature Ground Party Corner

I, Robert S. Custer certify that this Corner Record correctly reflects work performed by me or under my direction in compliance with the "Corner Recordation Act" (70-22-101, et seq., M.C.A.)

Signature of Surveyor REGISTERED

Date: 4/15/87 Reg. No. 33255
 MDOH
 Employer: _____

Sec. 4



Office of Clerk and Recorder, County of Powell. This "corner record" was filed for record on April 30th, 1987 @ 11:15 A.M. was noted on the cross-index plat and is assigned page No. _____, in book No. _____

County Official

E-11 T. 8 N. R. 9 W. P.M.M.
 Cross Index No. _____

• - corner this sheet