

INSTRUCTIONS

1. Original and/or subsequent record used to evaluate the corner position.
2. Description of evidence found, note discrepancies in the record, state method of establishing lost or obliterated corners.
3. Description of monument and accessories set to perpetuate the corner position.
4. Sketch or corner, show all pertinent data which can best be shown in a sketch example, corner marking, topography ties, position of accessories, etc.
5. Certification must be signed and sealed by Registered Land Surveyor in State of Montana.
6. Fill in Cross Index & Section Diagram at bottom of sheet.

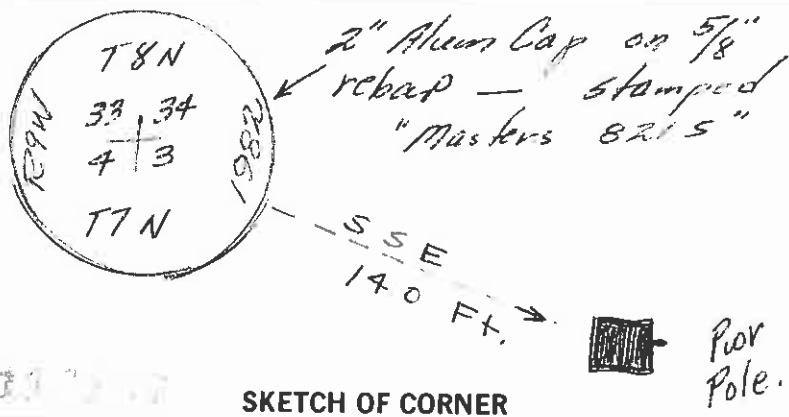
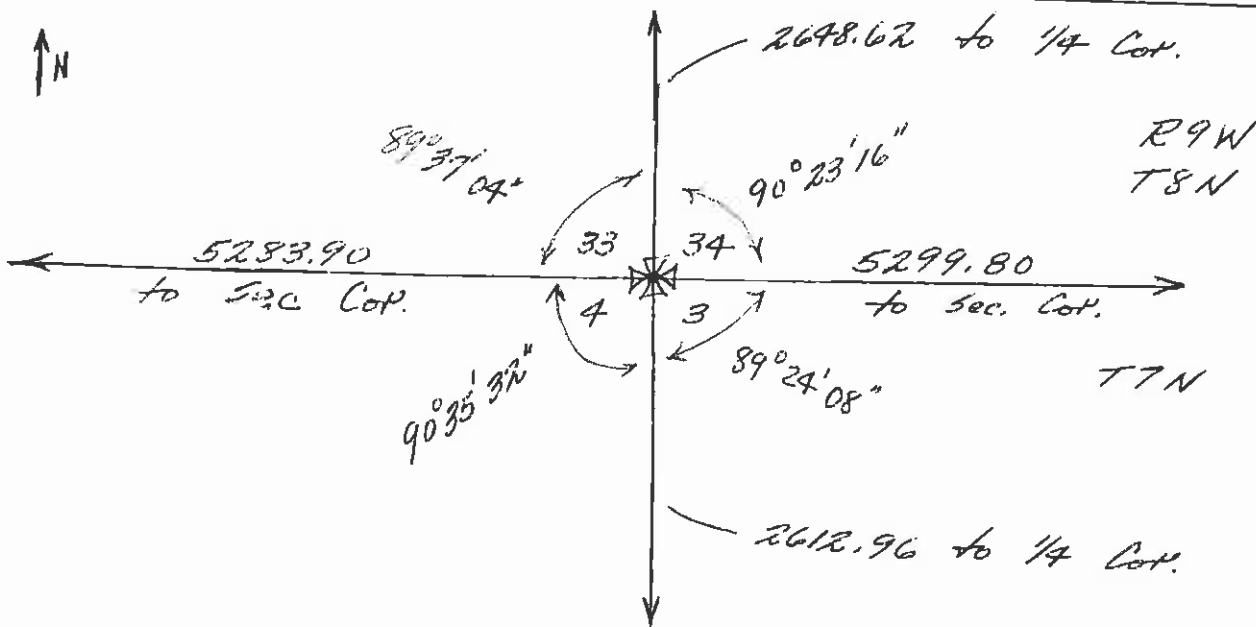
CERTIFIED CORNER RECORDATION

Corner SW Cor. - Sec 34 T. 8N R. 9W P.M.M. Powell County
 orig 1868 field notes - a post in mound of earth with pits charred stake (etc)? as per instructions.

general location established from various ties to Sec. Cor. from Additions to City of Deer Lodge adjacent to Sec. Cor.

Found remains of apparent charred post in place approx 6" below surface of alley.

Set new 5/8" x 24" rebar in cntr of found post remains with 2" Alum Cap - buried 6" below dirt alley surf. Attached 4" Alum Witness Tag to Prov. Pole SSE - 14.0 Ft.



SKETCH OF CORNER

CERTIFICATION

I, _____
 certify the information shown herein is true and correct.

Signature Ground Party Chief
RAY G. MASTERS

I, _____
 certify that this Corner Record correctly represents work performed by me or under my direction in compliance with the "Corner Recordation Act" (70-22-101, et seq., M.D.A.)

Ray G. Masters
 Signature of Surveyor & Seal

Date: 12-23-83 Reg. No. 8215

Employer: Self

Office of Clerk and Recorder, County of Powell. This "corner record" was filed for record on the December 29, day of 19 83 @ 3:31 P.M. was noted on the cross-index plat and is assigned page No. _____, in book No. _____

County Official

Cross Index No. 13Z T. 8N R. 9W P.M.M.

