

INSTRUCTIONS

1. Original and/or subsequent record used to evaluate the corner position.
2. Description of evidence found, note discrepancies in the record, state method of establishing lost or obliterated corners.
3. Description of monument and accessories set to perpetuate the corner position.
4. Sketch or corner, show all pertinent data which can best be shown in a sketch example, corner marking, topography ties, position of accessories, etc.
5. Certification must be signed and sealed by Registered Land Surveyor in State of Montana.
6. Fill in Cross Index & Section Diagram at bottom of sheet.

CERTIFIED CORNER RECORDATION

Corner East 1/4 Cor - Sec. 33 T. 8N R. 9W P.M.M. Powell County

Orig 1868 field notes - a post in mound of earth with pits charred stake (tie?) as per instructions

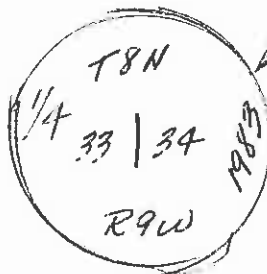
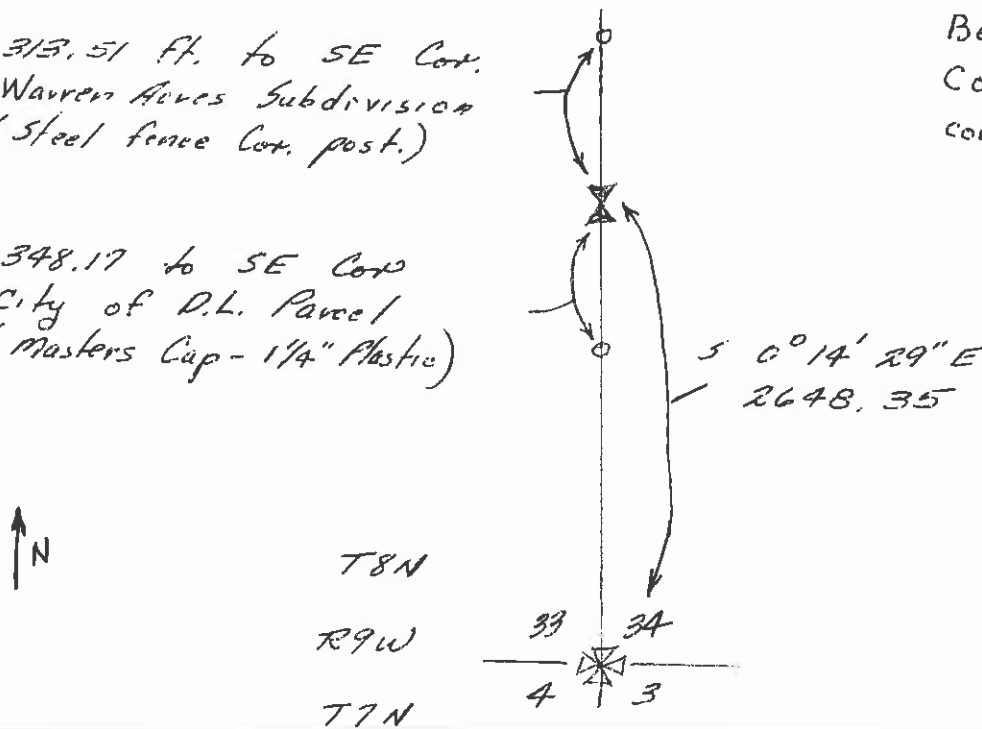
No Marker or Pits found.
(No Sec. Cor. North found)

New Marker set on line between marker for SE Cor. of Warren Acres Subdivision and Sec. Cor. to South, & using stake from survey for Book 51 - page 245 parcel & tie to existing marker for NW Cor. of Brookside Addition.

313.51 ft. to SE Cor. Warren Acres Subdivision (Steel fence Cor. post.)

348.17 to SE Cor. City of D.L. Parcel (Masters Cup - 1/4" Plastic)

Bearings from state Co-ords (adjusted counterclock 2°21'46")



5/8" x 3/16" rebar with 1/2" Alum Cup - stamped "Masters 8215"

(under existing N-S fence line)
SKETCH OF CORNER

CERTIFICATION

I, _____ certify the information shown herein is true and correct.

Signature Ground Party Chief

RAY G. MASTERS

I certify that this Corner Record correctly represents work performed by me or under my direction in compliance with the "Corner Recordation Act" (70-22-101, et seq., M.D.A.)

Ray G. Masters
Signature of Surveyor & Seal

Date: 12-29-83 Reg. No. 8215

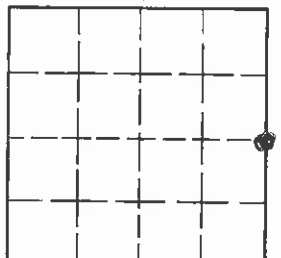
Employer: Self

Office of Clerk and Recorder, County of Powell. This "corner record" was filed for record on the December 29, day of 1983 @ 3:34 P.M. was noted on the cross-index plat and is assigned page No. 13 X, in book No. _____

County Official

Cross Index No. 13 X T. 8N R. 9W P.M.M.

Sec. 33



• - corner this sheet