

CERTIFIED LAND CORNER RECORDATION

DESCRIPTION OF CORNER EVIDENCE FOUND, AND ORIGINAL RECORD (IF KNOWN)

Original Field Notes - Oct. 1868
 Set cor to sec. 15, 16, 21, 22, a post in mound of earth with pits charred stake etc as per instructions

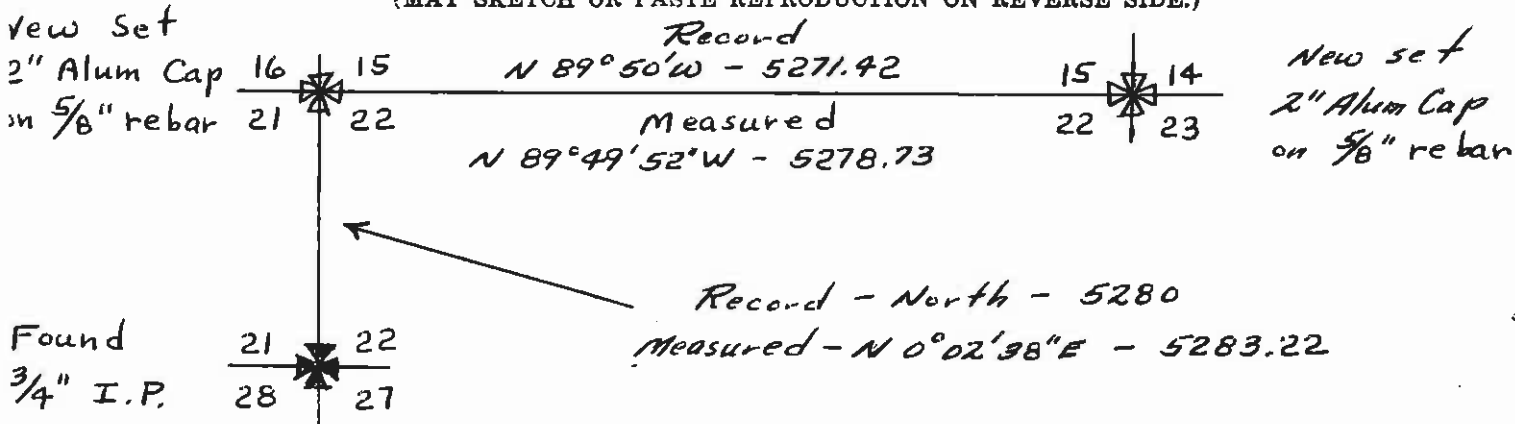
No Marker Found

DESCRIPTION OF MONUMENT AND ACCESSORIES ESTABLISHED TO PERPETUATE THE ORIGINAL LOCATION OF THIS CORNER:

set 24" x 5/8" rebar with 2" dia Alum Survey Cap stamped R. G. Masters R.L.S. 821 S Date of work: 4-5-78

inscribed	16	15	with white painted 2" x 4" x 30" post adjacent to marker
	21	22	
	T 8 N	R 9 W	

SKETCH, WITH COURSE AND DISTANCE TO ADJACENT CORNERS IF DETERMINED IN THIS SURVEY. (MAY SKETCH OR PASTE REPRODUCTION ON REVERSE SIDE.)



Surveyor's Seal

I, RAY G MASTERS
 certify that the information shown herein is true and correct.

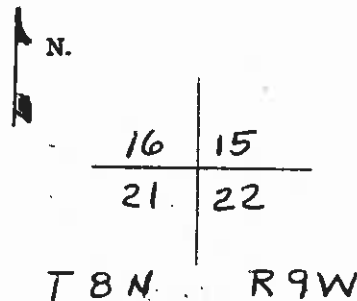
Signature of Ground Party Chief

I, RAY G MASTERS
 certify that I have carefully performed or reviewed the work done on the diagrammed corner as reported on this recordation form and approve the same.

Ray G. Masters
 Signature of Surveyor

821 S
 Registration Number

DIAGRAM OF CORNER:



= Corner recorded on the sheet

Office of Clerk and Recorder, County of Powell

This "corner record" was filed for record on the 27th day of April, 19 78, was noted on the cross-index plat and is

assigned page No. _____, in book No. _____

County Official