

INSTRUCTIONS

1. Original and/or subsequent record used to evaluate the corner position.
2. Description of evidence found, note discrepancies in the record, state method of establishing lost or obliterated corners.
3. Description of monument and accessories set to perpetuate the corner position.
4. Sketch of corner, show all pertinent data which can best be shown in a sketch example, corner marking, topography ties, position of accessories, etc.
5. Certification must be signed and sealed by Land Surveyor registered in the State of Montana.
6. Fill in Cross Index & Section Diagram at bottom of sheet.

**CERTIFIED CORNER RECORDATION**

Corner NE CORNER, SEC. 1 T. 7 N R. 9 W P.M.M. POWELL County

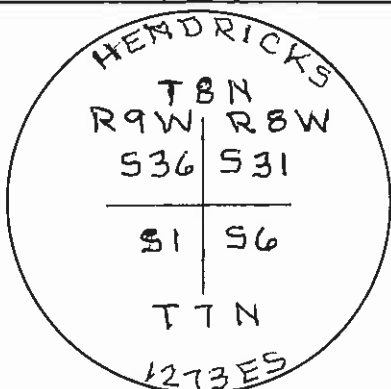
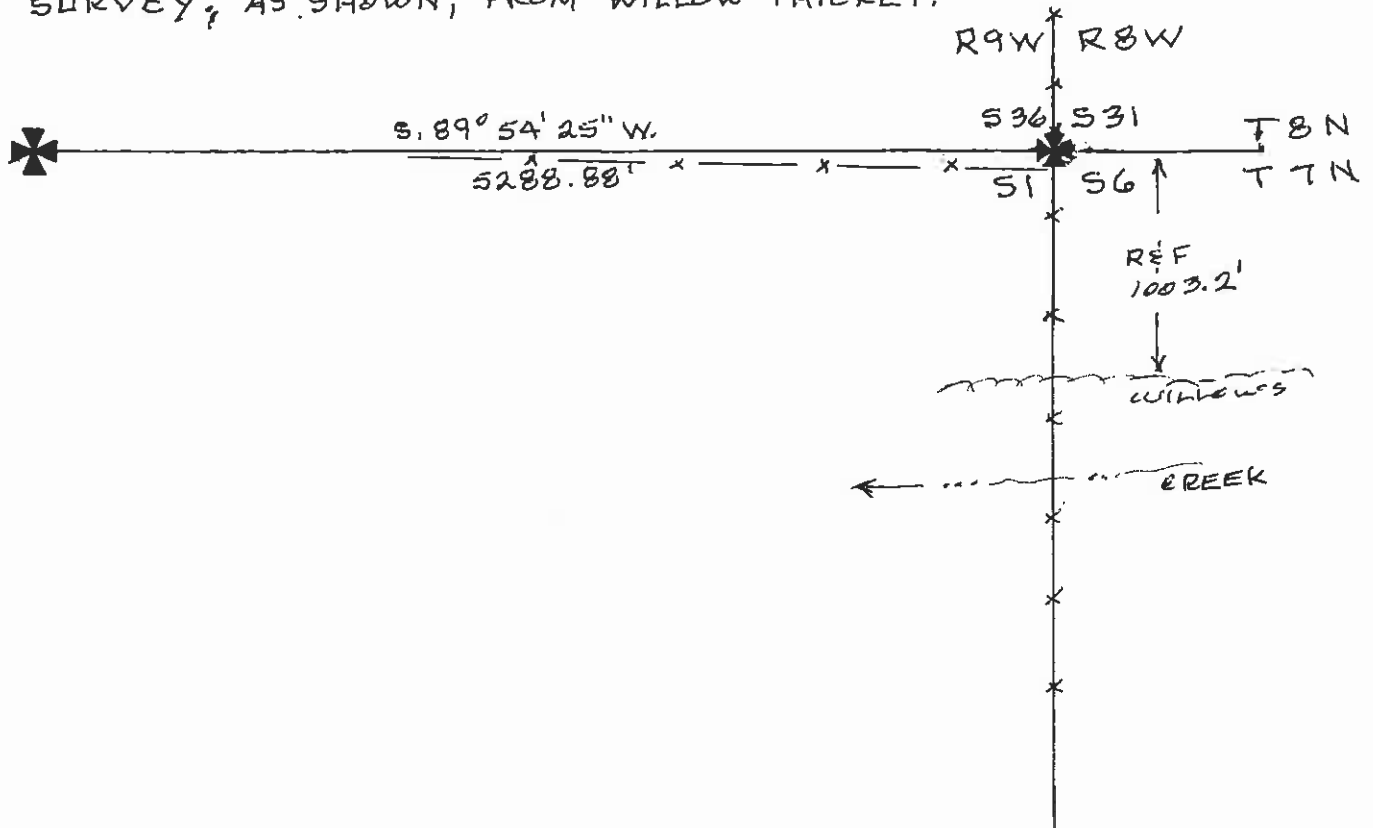
**DESCRIPTION OF CORNER EVIDENCE AND ORIGINAL RECORD:**

NO EVIDENCE OF ORIGINAL CORNER FOUND.

ORIGINAL RECORD: A POST IN MOUND OF EARTH WITH PITS, MARKED STONE AND AS PER INSTRUCTIONS.

**DESCRIPTION OF MONUMENT SETS:**

SET A 5/8" x 24" REBAR WITH A 2 1/2" ALUMINUM CAP IN THE EXISTING NORTH-SOUTH FENCE AND 32 FEET NORTH OF THE EAST-WEST FENCE. THE NORTH-SOUTH LOCATION WAS DETERMINED FROM THE ORIGINAL CALL IN THE BLM SURVEY; AS SHOWN, FROM WILLOW THicket.



147810

SKETCH OF CORNER

CERTIFICATION

I, \_\_\_\_\_ certify the information shown here is true and correct.

Signature of Ground Party Clerk  
 I, DONALD A. HENDRICKS, certify that this Corner Record correctly represents work performed by me or under my direction in compliance with the "Corner Recordation Act" (70-22-301 et seq., M.C.A.).

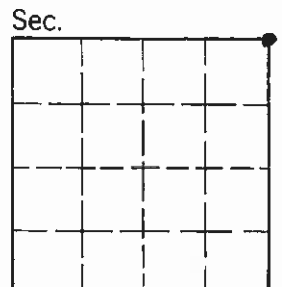
Donald A. Hendricks  
 Signature of Surveyor & Seal

Date: 10/10/99 Reg. No. 1273 ES

Employer: \_\_\_\_\_

Office of Clerk and Recorder, County of POWELL. This "corner record" was filed for record on October 14, 1999 @ 3:50 P.M. was noted on the cross-index plat and is assigned page No. \_\_\_\_\_, in book No. \_\_\_\_\_

Karla M. Ryden  
 County Official



Cross Index No. A-25 T. 7N R. 9W P.M.M.

• - corner this sheet