

CERTIFIED CORNER RECORDATION

Corner NW SECTION 18 T. 8N R. 15N P.M.M. WHEATLAND County
NE SECTION 13 8N 14N

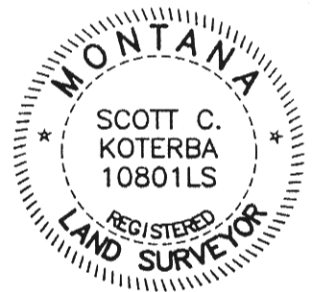
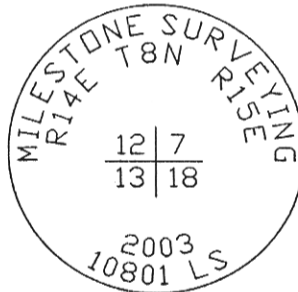
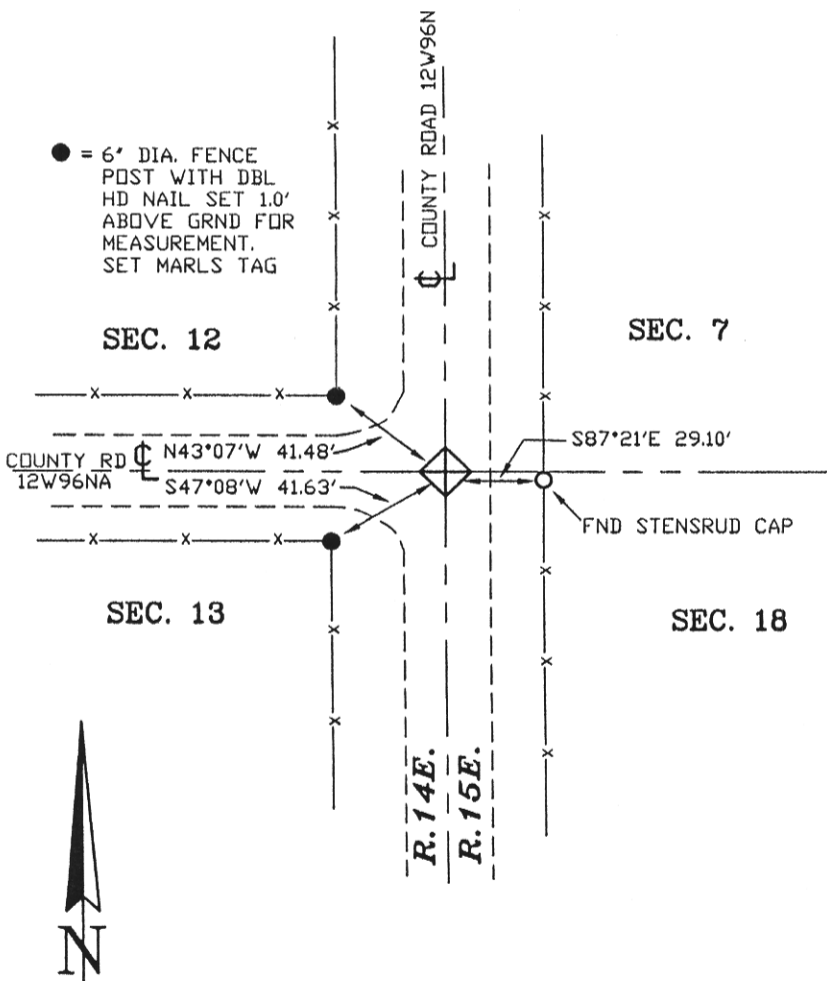
ORIGINAL RECORD: Notes from the original record were used for the search for this corner. They have since been lost.

SUBSEQUENT RECORD: Corner is shown on C/S #100972 but no corner form exists. Not held for C/S #102317.

EVIDENCE FOUND: Found rebar with 2" Stensrud aluminum cap at base of right-of-way fence post per C/S 100972. The cap was marked as the closing corner for sections 7 & 18.

PERPETUATION: Set a 5/8" rebar with 2" aluminum cap 0.3' subsurface in gravel road. Set references as shown. Refer to C/S 102317 for perpetuation.

SEE CERTIFICATE OF SURVEY #102317



03-519

CERTIFICATION	
I, _____	certify the information shown herein is true and correct.
_____ Signature Ground Party Chief	
I, <u>Scott C. Koterba</u>	
certify that this Corner Record correctly represents work performed by me or under my direction in compliance with the 'Corner Recordation Act' (70-22-101, et seq, M.C.A.)	
<u>Scott C. Koterba</u> Signature of Surveyor & Seal	
Date: <u>2/17/04</u>	Reg. No. <u>10801 LS</u>
Employer: _____	Milestone Surveying

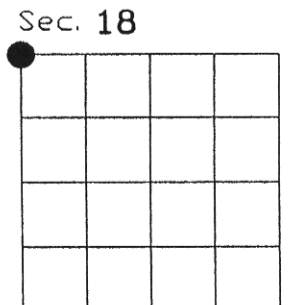
SKETCH OF CORNER

Office of Clerk and Recorder, County of Wheatland. This 'corner record' was filed for record on 2/24/04

was noted on the cross-index plat and is assigned page No. 243, in document book No. 102467

Tiffany Smart, deputy
County Official

Cross Index No. J1 T. 8N R. 15E P.M.M.
J25 8N 14E



• corner this sheet