

104437

# CERTIFIED CORNER RECORDATION

Corner SW SECTION 11 T. 8N R. 15E P.M.M. WHEATLAND County

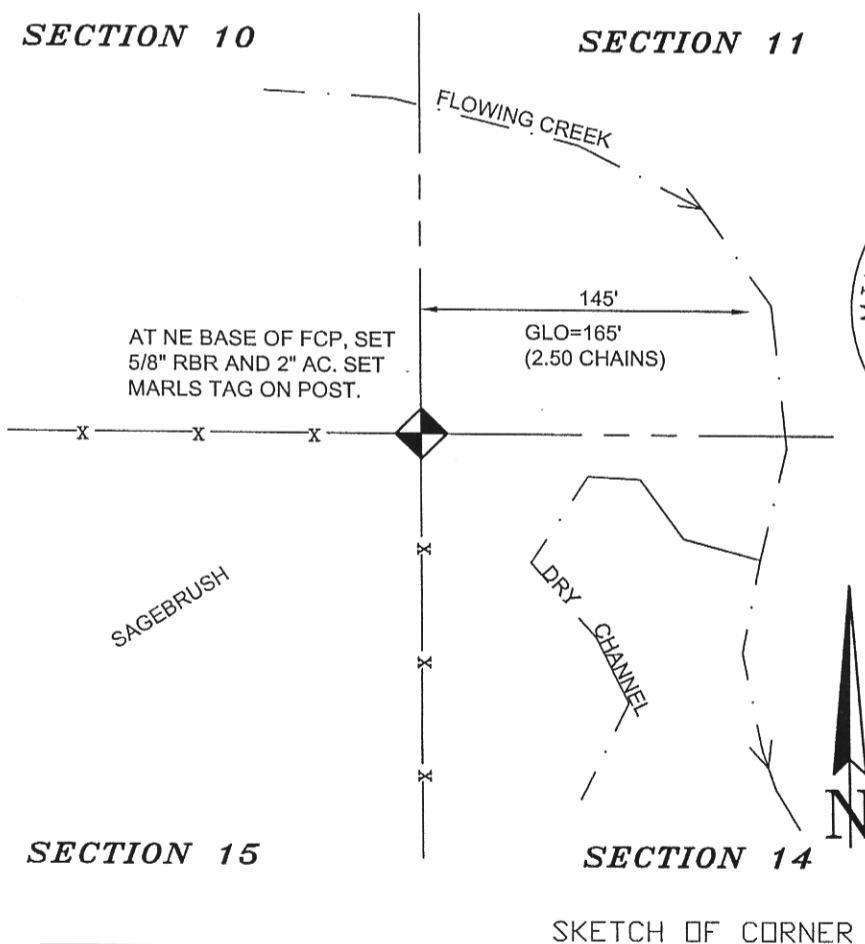
**ORIGINAL RECORD:** (GLO - DeLacy & Folsom, 1874) Set a sandstone 28 x 5 x 4 in. 19 in. in the ground for Cor. of Sec. 10, 11, 14 and 15 marked with 4 notches on S. and 2 notches on E. edges.

**SUBSEQUENT RECORD:** None.

**EVIDENCE FOUND:** (November, 2006) No original evidence was found. Found a FCP (WxS) that matched GLO calls to the creek to the East and dimensions in 3 directions.

**PERPETUATION:** (November, 2006) Accepted the FCP and at the Northeast base, set a 5/8" rebar and 2" aluminum cap, marked as shown. Set a MARLS tag on FCP.

## SEE PLAT OF ANTELOPE SUBDIVISION



06-770

CERTIFICATION

I, \_\_\_\_\_ certify the information shown herein is true and correct.

Signature Ground Party Chief

Scott C. Koterba

I, \_\_\_\_\_ certify that this Corner Record correctly represents work performed by me or under my direction in compliance with the "Corner Recordation Act" (70-22-101, et seq., M.C.A.)

*Scott C. Koterba*  
Signature of Surveyor & Seal

Date: 5/25/07 Reg. No. 10801 LS

Employer: Milestone Surveying

Office of Clerk and Recorder, County of Wheatland. This "corner record" was filed for record on May 29, 2007 was noted on the cross-index plat and is assigned page No. 266, in book No. 1 Gwen Brown deputy County Official

Sec. 11


104437 Cross Index No. J-17 T. 8N R. 15E P.M.M.

• corner this sheet