

CERTIFIED CORNER RECORDATION

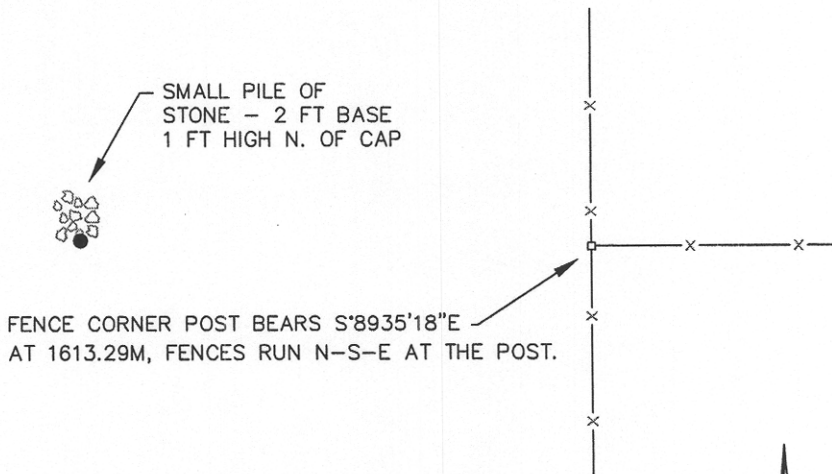
Corner 23|24 / 26|25 T. 8 N. R. 15 E. P.M.M. WHEATLAND County

Original Record: Set a sandstone 18x16x4 ins, 12 ins in the ground for cor. to Sec 23, 24, 25 & 26. Marked with 2 notches on S. and 1 notch on east edges.
 (Walter W. deLacy)
 (David E. Folsom)
 1874

Subsequent Record: Corner record by HKM (Scott Bloomenrader 9005LS) filed 9/30/98. Set a 5/8x30" rebar with 3-1/4" dia. Alum. cap at centerline of found weathered stone (?x14"x2"). Wedged stone on south side of rebar.

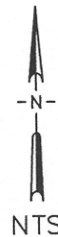
Evidence Found: Found Alum Cap and rebar as described.

Perpetuation: Corner is in good condition. Made references to adjacent corner as shown below.

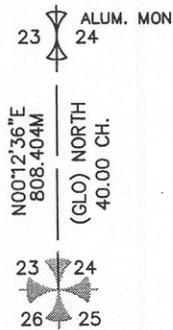


NOTE: *Bearing and Dist. are based on State Plane Metric NAD 83-1992. To convert Dist. shown (grid) to ground divide by C.A.F. of 0.99922473.

LAT 46°25'53.80293"N
 LON 109°47'59.11839"W
 WGS 84



BASIS OF BEARING IS C/S 94557



SKETCH OF CORNER

CERTIFICATION

I, _____ certify the information shown herein is true and correct.

Signature Ground Party Chief SCOTT BLOOMENRADER

I, Scott Bloomenrader certify that this Corner Record correctly represents work performed by me or under my direction in compliance with the "Corner Recordation Act" (20-22-101, et seq., M.C.A.)

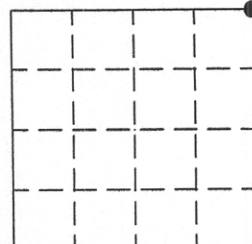
Signature of Surveyor & Seal

Date: 9/05/2001 Reg. No. 9005LS

Employer: HKM Engineering Inc Billings, MT

Office of Clerk and Recorder, County of Wheatland. This "corner record" was filed for record on 9-7-01 was noted on the cross-index plat and is assigned page No. 179, in book No. 100879 Smart County Official

Sec. 26-T8N-R15E



• - corner this sheet

Cross Index No. R-21 T. 8 N. R. 15 E. PMM