

INSTRUCTIONS

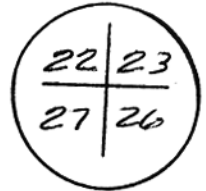
1. Original and/or subsequent record used to evaluate the corner position.
2. Description of evidence found, note discrepancies in the record, state method of establishing lost or obliterated corners.
3. Description of monument and accessories set to perpetuate the corner position.
4. Sketch or corner, show all pertinent data which can best be shown in a sketch example, corner marking, topography ties, position of accessories, etc.
5. Certification must be signed and sealed by Registered Land Surveyor in State of Montana.
6. Fill in Cross Index & Section Diagram at bottom of sheet.

CERTIFIED CORNER RECORDATION

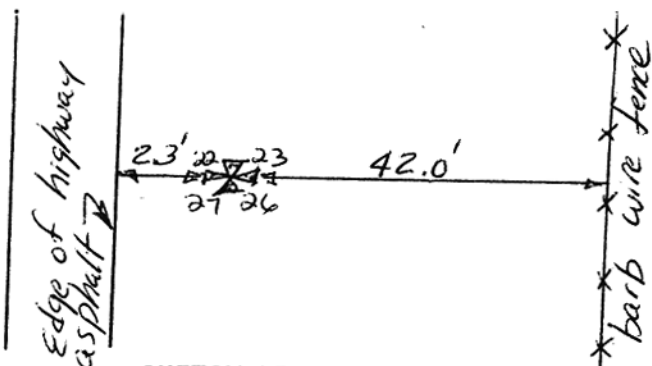
Corner S.W. Cor Sec 23 T. 8N R. 25E P.M.M. Musselshell County

1.) Original GLO notes (1883) "Set a sandstone 18x16x8 ins 12 ins in the ground for cor to sec 5 22, 23, 26 & 27 marked 2 notches on S & E edges. dug pits 18, 18, 12 ins in each sec 5 1/2 ft. dist. and raised a mound of earth 2 ft. high 4 1/2 ft base alongside. Certificate of Survey No 1982-11 - "Set a 2 inch diameter Aluminum cap at section corner."

2.) Found an Aluminum cap marked (2" diameter)



3.) No additional monuments set to perpetuate corner



SKETCH OF CORNER

CERTIFICATION

I, Dan Kenczka
certify the information shown herein is true and correct.

Dan Kenczka
Signature Ground Party Chief

I, Jack R. Fisher
certify that this Corner Record correctly represents work performed by me or under my direction in compliance with the "Corner Recordation Act" (70-22-101, et seq., M.C.A.)

Jack R. Fisher
Signature of Surveyor & Seal

Date: 10/8/89 Reg. No. 60133
 Employer: Thomas, Dean & Hoskins

Office of Clerk and Recorder, County of Musselshell. This "corner record" was filed for record on the February 14 day of 1990, 12:59 P.M. was noted on the cross-index plat and is assigned page No. _____, in book No. _____

Frances L. Dawson
 County Official
R-17 T. 8N R. 25E P.M.M.

