

240558

CERTIFIED CORNER RECORDATION

Corner SE Section 18 T. 8N. R. 26E. P.M.M. Musselshell County
[211] (N-5)

Original Record: (1884) Set a sandstone 16 x 14 x 4 inches, 10 inches in the ground, for cor to sec's., 17,18,19,& 20, marked 3 notches on S & 5 notches on E edges, dug pits 18x18x12 ins. in each sec. 5 1/2ft dist., and raised a mound of earth 2 ft. high 4 1/2 ft. base alongside.

Subsequent Record:

- (1974) Milton I. Booth, R.L.S. 2968, Certificate of Survey No. 1974-7.
- (1983) Joseph W. Fisher R.L.S. 329-S, Certificate of Survey No. 1983-12.
- (1984) Stephen D. Simpson, R.L.S. 3717-S, Certificate of Survey No. 1984-2.
- (1988) Leslie D. Jones, L.S. 1823-S, Certificate of Survey No. 1988-6.

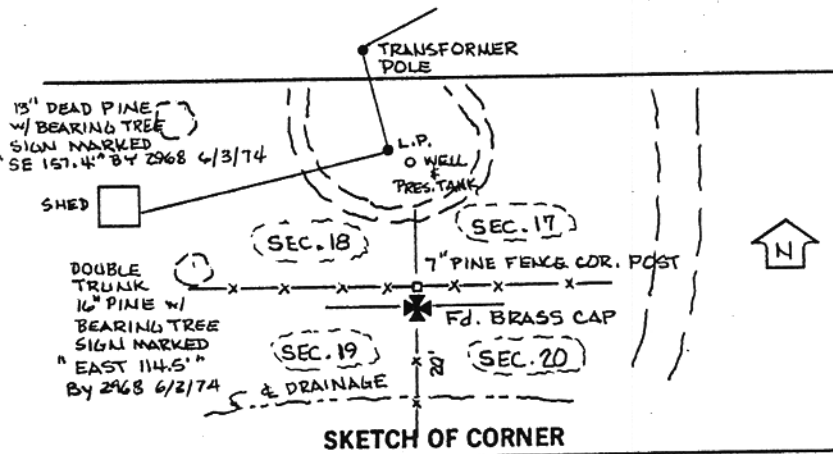
Evidence Found: Found 2" brass cap on a 1" galvanized metal pipe, 2" above ground, 0.5' S. of base of a 7" pine fence corner post, E-W x S. (post leans south). Found, a 13" dead pine with bearing tag sign marked, (" SE, 157.4' ") by 2968 6/3/74. Found, a 16" pine with bearing tag sign marked, (" East, 114.5' ").

Perpetuation: Set 5.5' gal fence post with sticker. SEE SKETCH

SEE ASSOCIATED CERTIFICATE OF SURVEY.



92-837.1



CERTIFICATION

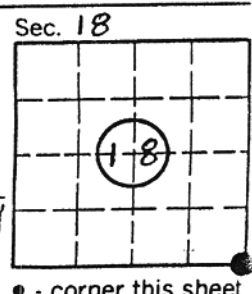
I, _____
certify the information shown herein is true and correct.

Signature Ground Party Chief
I, DANIEL W MCGEE
certify that this Corner Record correctly represents work performed by me or under my direction in compliance with the "Corner Recordation Act" (70-27101, et seq., M.C.A.)

Signature of Surveyor & Seal
Daniel W. McGee
Date: 1/14/95 Reg. No. 5157 S
Employer: MCGEE & COMPANY

Office of Clerk and Recorder, County of MUSSELHELL. This "corner record" was filed for record on JANUARY 19, 1995 9:30 AM was noted on the cross-index plat and is assigned page No. _____, in book No. _____

James Mang-Judith B Hawkins Deputy
County Official



Cross Index No. N-5 T. 8N R. 26E P.M.M.

• - corner this sheet