

CERTIFIED CORNER RECORDATION

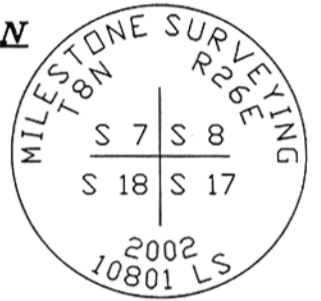
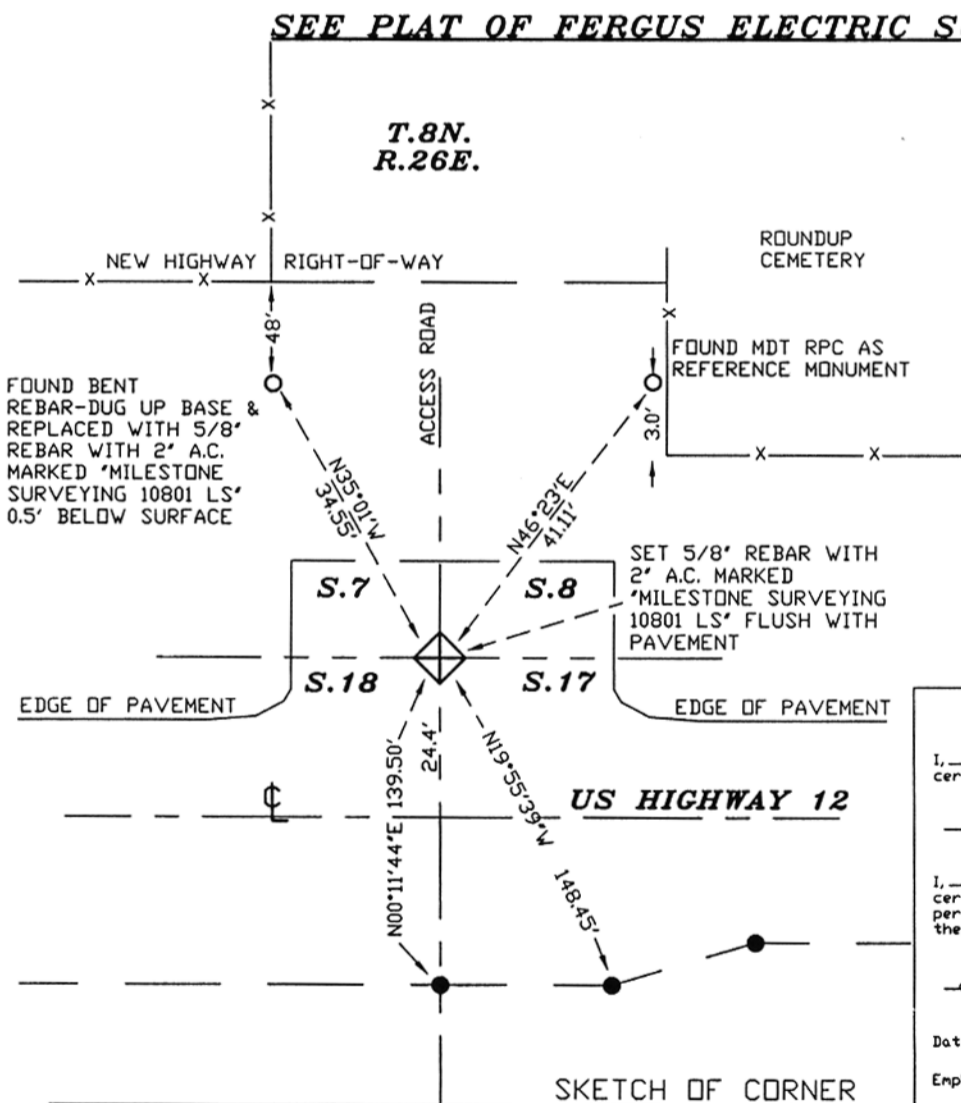
Corner NW SECTION 17 T. 8N R. 26E P.M.M. MUSSELSHELL County

ORIGINAL RECORD: August 1884 - Set a sandstone 16 x 13 x 5 ins. 10 ins. in the ground for cor. to Secs. 7, 8, 17, & 18 marked 4 notches on South and 5 on East edges. Dug pits 18 x 18 x 12 ins. in each sec. 5 1/2 ft. dits. and raised a mound of earth 2 ft. high 4 ft. base alongside.

SUBSEQUENT RECORD: Certified Corner Recordation, David R. Davis, 4378-S, December, 1992 - Set a 5/8" x 30" rebar with a 2" diameter cap, 0.5 ft. below the surface of gravel road at the position of the 3/8" x 18" rebar with reference monuments.

EVIDENCE FOUND: Found the 5/8" rebar with a RPC to the Northeast, and found a bent rebar to the Northwest. The section corner was not found due to new road construction.

PERPETUATION: Reset the rebar to the Northwest with a 5/8" rebar with a 2" aluminum cap marked "Milestone Surveying 10801 LS". Reset the section corner per 1992 corner recordation using the record distance from both reference monuments. Set a 5/8" rebar with a 2" aluminum cap marked "Milestone Surveying 10801 LS"



02-448

CERTIFICATION

I, _____
certify the information shown herein is true and correct.

Signature Ground Party Chief

Scott C. Koterba

I, _____
certify that this Corner Record correctly represents work performed by me or under my direction in compliance with the 'Corner Recordation Act' (70-22-101, et seq., M.C.A.)

Scott C. Koterba
Signature of Surveyor & Seal

Date: 5/23/02 Reg. No. 10801 LS

Employer: Milestone Surveying

Office of Clerk and 256056 Fee \$
record' was filed for MUSSELSHELL COUNTY
was noted on the c/ Recorded 05/24/2002 At 10:00 AM
book No. _____ By Jane E Mang, Clerk and Recorder Deputy
Norma Musqman Deputy

Sec. 17

●			

County Official

Cross Index No. J-5 T. 8N R. 26E P.M.M.

● corner this sheet