

CERTIFIED CORNER RECORDATION

Corner: SW Corner Section 15 T. 8N. R. 26E. P.M.M. Musselshell Co.

Original Record 1884 GLO: "Set a sandstone 16x12x5 inches, 10 inches in the ground for the corner to sections 15, 16, 21, & 22 marked 3 notches on the E. and S. edges, dug pits 18x18x12 inches in each section 5 1/2 feet distance and raised a mound of earth 2 feet high, 4 1/2 feet base alongside; From which a pine 8 inches diameter bears N.10°W., 76 links distance, marked T.8N. R.26E. S.16 BT. A pine 13 inches in diameter bears N.48°E. 94 links distance, marked T.8N. R.26E. S.15 BT

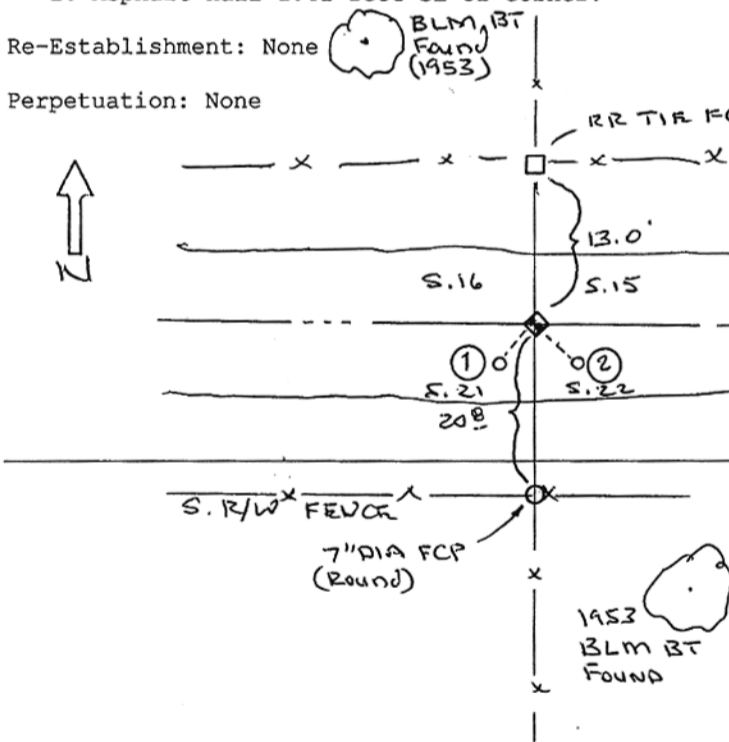
Subsequent Record 1953 BLM: "Set an Iron post, 28 inches long, 2 1/2 inches in diameter, 34 inches in the ground with brass cap marked as show below; from which a pine 8 inches diameter, bears N.44°45'E., 1.28 chains distance marked T8N R26E S15 BT. A cedar 4 inches diameter bears S.35°45'E. 76 links distance marked T.8N. R.26E S.22 BT. A pine 7 inches diameter, bears S.32°15'W. 76 links distance marked T.8N. R.26E. S.21 BT. A pine 10 inches diameter, bears N.47°W. 90 links distance, marked T.8N. R.26E S.16 BT. Encircle the post with a copper wire ring, 12 inches diameter set 6 inches below the surface. From this corner the corner of sections 16, 17, 20, & 21 bears S.89°11'W. 70.72 chains distance, which is monumented with a sandstone 24x20x4 inches, firmly set, plainly marked and witnessed by an old mound of stone."

Evidence Found 10/26/04: Found rebar ^{12 inches} ~~0.1 feet~~ below asphalt surface road, (top bent to S. shot base of bend in rebar. Rebar is 13 feet south of Rail Road tie Fence Corner Post. Accepted as corner position and established the following references.

1. Asphalt nail 1.25 feet SW of corner
2. Asphalt nail 1.41 feet SE of corner.

Re-Establishment: None

Perpetuation: None



03-2020 PN.7530DD June 30, 2006
CERTIFICATION

I, _____
Certify the information shown herein is true and correct.

Signature Ground Party Chief

I, Daniel W. McGee
Certify that this Corner Record correctly represents work Performed by me or under my direction in compliance with The "Corner Recordation Act" (70-22-101, et seq., M.C.A.)

Daniel W. McGee
Signature of Surveyor & Seal

Date: OCT. 2006 Reg. No. 5157 S

Employer: MCGEE AND COMPANY, Inc.

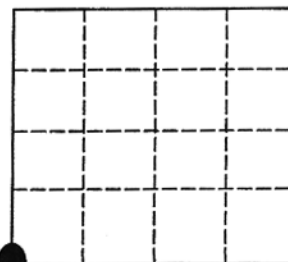
SKETCH OF CORNER

Office of Clerk and Recorder, County of
Record" wa 264532 Fee \$.00
MUSSELSHELL COUNTY
Was noted Recorded 10/16/2006 At 09:02 AM
By Jane E Mang, Clerk and Recorder
By Justith B Hawkins Deputy

County Official

This "corner

Sec. 15



Cross Index No. N-13 8N R. 26E P.M.M. ● - corner this sheet