

CERTIFIED CORNER RECORDATION

Corner: W. ¼ Corner Section 15 T. 8N. R. 26E. P.M.M. Musselshell Co.

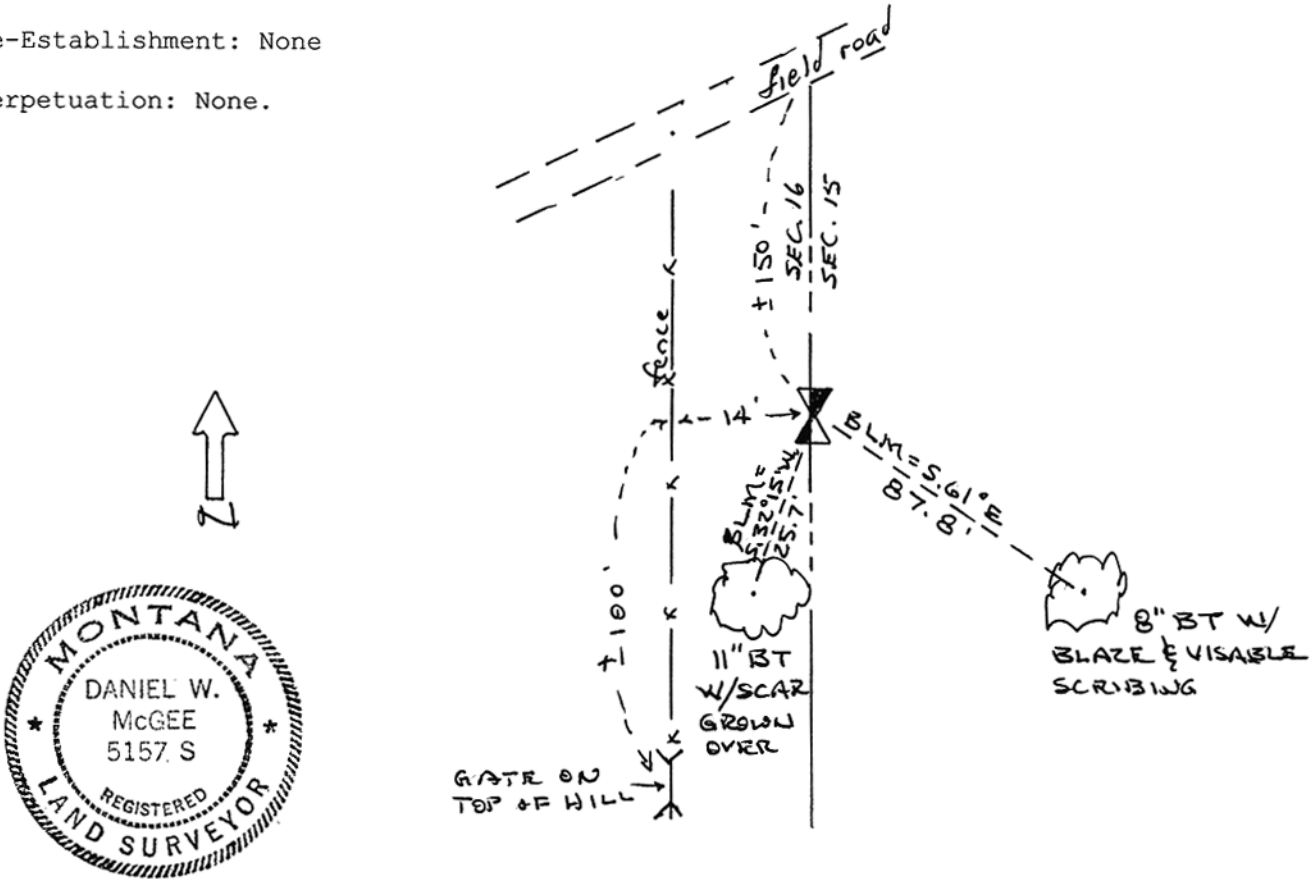
Original Record 1953 BLM: "Set an iron post, 3 feet long, 2 ½ inches diameter, 22 inches in the ground with brass cap marked as shown below, from which, a pine 6 inches diameter, bears S.61°E., 1.33 chains distance marked ¼ S 15 BT. A pine 6 inches diameter, bears S.32°15'W. 39 links distance marked ¼ S 16 BT."

Subsequent Record: None.

Evidence Found 3/26/04: Found 1953 BLM Brass Cap about 150 feet from field road, and 14 feet East of N-S fence. Marked as shown below. Found 11 inch BLM Bearing tree with scar grown over SW of Cap, found 8 inch Bearing Tree with blaze and scribe visible SE of Cap.

Re-Establishment: None

Perpetuation: None.



03-2020 PN.7007 June 30, 2006
CERTIFICATION

I, _____
Certify the information shown herein is true and correct.

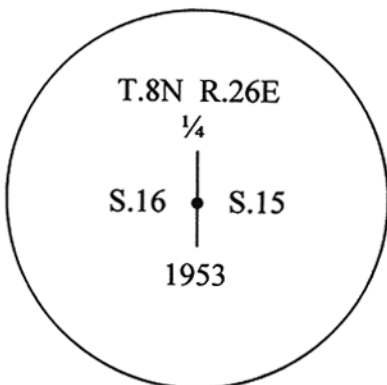
Signature Ground Party Chief

I, Daniel W. McGee
Certify that this Corner Record correctly represents work Performed by me or under my direction in compliance with The "Corner Recordation Act" (70-22-101, et seq., M.C.A.)

Daniel W. McGee
Signature of Surveyor & Seal

Date: SEPT. 2006 Reg. No. 5157 S

Employer: MCGEE AND COMPANY, Inc



FND BLM BRASS CAP

SKETCH OF CORNER

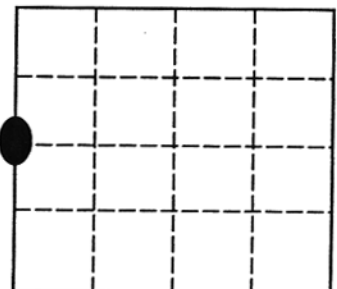
Office of Clerk and Recorder, County of MUSSELSHELL COUNTY
264531 Fee \$.00
Reco: MUSSELSHELL COUNTY
Recorded 10/16/2006 At 09:00 AM
Was 1 Jane E Mang, Clerk and Recorder
book By Judith B Hawkins Deputy

This "corner

Sec. 15

_____, in

County Official



Cross Index No. L-13 8N R. 26E P.M.M. ● - corner this sheet