

CERTIFIED CORNER RECORDATION

Corner: SE Corner Section 15 T. 8N. R. 26E. P.M.M. Musselshell Co.

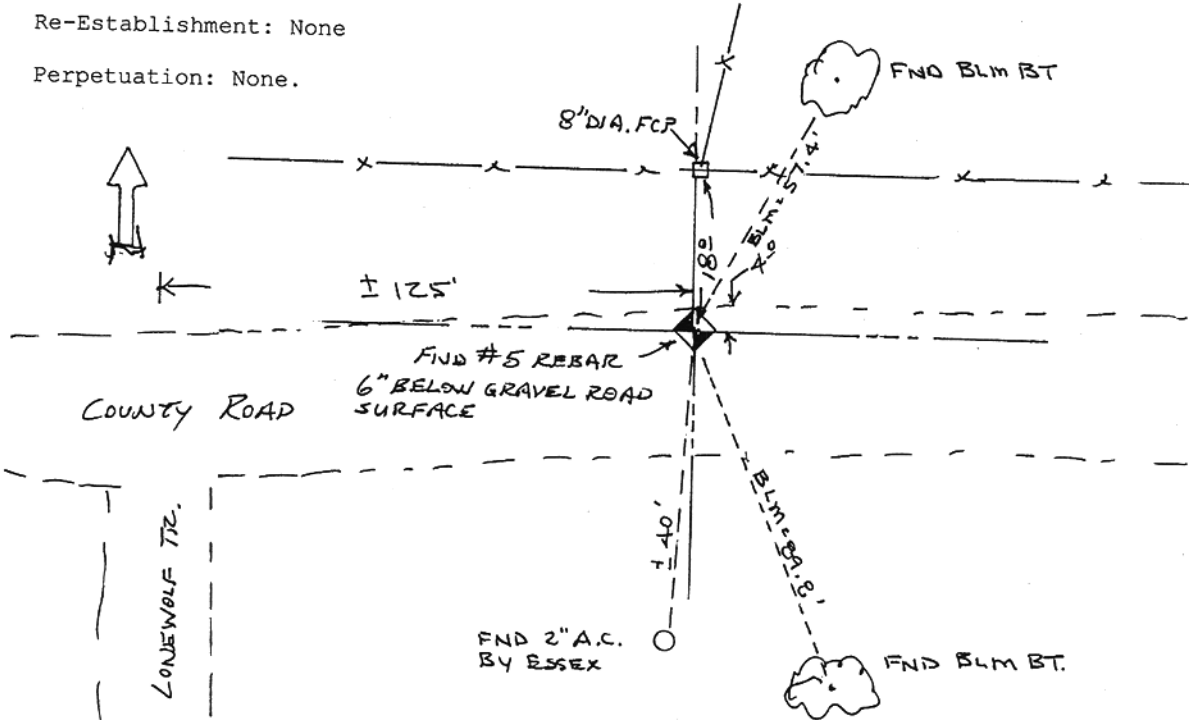
Original Record 1884 GLO: "Set a sandstone 16x12x4inches, 10 inches in the ground for Corner to Section 14,15,22, & 23, marked 3 notches on the S. and 2 notches on the E. edges, and raised a mound of stone alongside. Pits impracticable from which a pine tree 12 inches in diameter bears N.21°E., 86 links distance marked, a pine 10 inches N.28°W. 130 links marked..."

Subsequent Record: None.

Evidence Found 3/26/04: Found #5 rebar 6 inches below gravel surface road, 4 feet south of N. edge of Road, w/BLM Bearing Tree's NE & SE. Found Essex 2 inch aluminum cap 40 feet S. just N. of S. R/W fence about 25-30 feet W. of Fence Corner Post on S. side of road. Found 8 inch Diameter Fence Corner Post (E-W x NNE) 18 Feet from Corner. Intersect Lonewolf Tr., with County Road @ 125 feet West of Corner.

Re-Establishment: None

Perpetuation: None.



03-2020 PN.7005 June 30, 2006

CERTIFICATION

I, _____
 Certify the information shown herein is true and correct.

Signature Ground Party Chief

I, Daniel W. McGee
 Certify that this Corner Record correctly represents work performed by me or under my direction in compliance with The "Corner Recordation Act" (70-22-101, et seq. M.C.A.)

Daniel W. McGee
 Signature of Surveyor & Seal

Date: SEPT. 2006 Reg. No. 5157 S

Employer: MCGEE AND COMPANY, Inc.



SKETCH OF CORNER

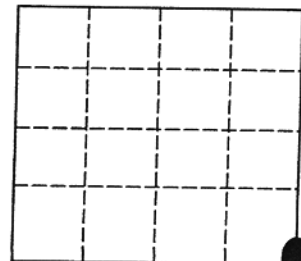
Office of Clerk and Recorder
264534 Fee \$.00
 Record **MUSSELSHELL COUNTY**
 Recorded **10/16/2006 At 09:06 AM**
 Was no **Jane E Mang, Clerk and Recorder**
 book N **By Judith B Hawkins Deputy**

This "corner

Sec. 15

_____, in

County Official



Cross Index No. N-17 8N R. 26E P.M.M. ● - corner this sheet