

INSTRUCTIONS

1. Original and/or subsequent record used to establish the corner position.
2. Description of evidence found, note discrepancies in the record, state method of establishing lost or obliterated corners.
3. Description of monument and accessories set to perpetuate the corner position.
4. Sketch of corner, show all pertinent data which can best be shown in a sketch example, corner marking, topography ties, position of accessories, etc.
5. Certification must be signed and sealed by Land Surveyor registered in the State of Montana.
6. Fill in Cross Index & Section Diagram at bottom of sheet.

CERTIFIED CORNER RECORDATION

Corner 1/4 Sections 26 & 27 T. 9N R. 10W P.M.M. Powell County

ORIGINAL RECORD: (1868 G.L.O.) Set 1/4 sec cor. a boulder 18x16x8 with pits, marked stone as per instructions.

SUBSEQUENT RECORD: None

EVIDENCE FOUND: Found a 2" Aluminum cap marked as shown in the sketch, on the south side of a mound of rock.

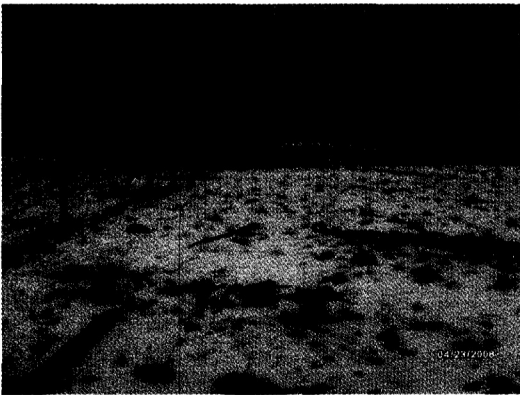
PERPETUATION: Left monument as found, Set a steel fence post 1 ft. west of monument. Fence E. ±8.1 ft. and fence posts N14°W 21.5 ft. and S30°W, 17.5 ft., both with BT tags attached.

The corner is on flat grassy slope.

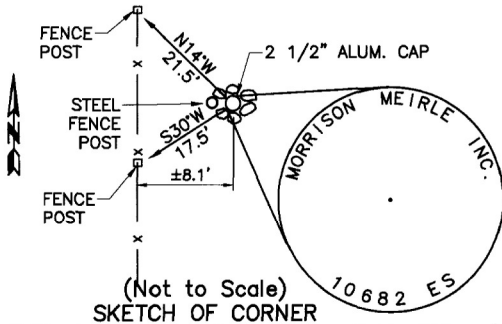
Date of Survey: April, 2008.

Compass Declination Used: 15°

NAD 83 coordinates for this corner:
 Latitude = 46°30'19.81262"N Longitude = 112°49'43.80108"W
 NOTE: These coordinates are to be used as a search tool only.



VIEW LOOKING NORTH



(Not to Scale) SKETCH OF CORNER

CERTIFICATION

I, John Shirey
 certify the information shown herein is true and correct.
 Signature Ground Party Chief

I, Kurt A. Luebke
 certify that this Corner Record correctly represents work performed by me or under my direction in compliance with the "Corner Recordation Act" (70-22-101, et seq. M.C.A.)
 Signature of Surveyor & Seal

Date: 6-21-2008 Reg. No. 13237 S
 Employer: DJ&A P. C.

Office of Clerk and Recorder, County of Davall This "corner" Sec. 27
162224 Fee: \$0.00 Bk Pg
 record" was filed **POWELL COUNTY** Recorded 6/27/2008 At 11:40 AM
 was noted on tl **Diane S. Grey, Clk & Rcdr By** [Signature]
 book No. _____ Return To: **KURT LUEBKE** _____, in _____
 _____ County Official

• - corner this sheet

Cross Index No. T-17 T. 9N R. 10W PMM