

# Missoula County Control Point Datasheet

Monument Description: 3-1/4" Aluminum Cap 5927S w/ casing

Project Name: ALL

Station Description: Section Corner

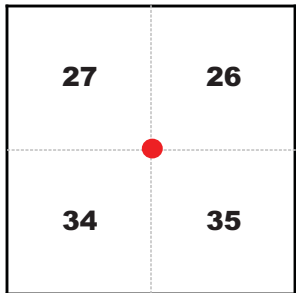
Date Visited: Aug. 14, 2010

Monument Stability: C+      GPS Visibility: C

Observer: CLG - AH

Quad. Name: Florence

T. 11 N. R. 20 W.



NAD 83 (2007) Lat/Long Position

46°40'31.334"N

114°05'16.051"W

NAVD 88 Elevation: 3274.0 sft.

Notes:

Photo of Monument



Photo Looking North



Photo Looking East



Photo Looking West





**To Reach:** 2wd access.



Map of Area

Book 544 Page 0051

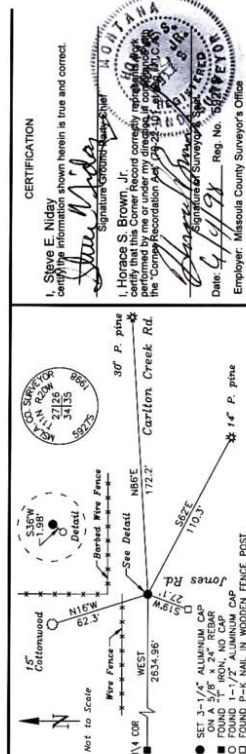
- INSTRUCTIONS**
1. Original and/or recent record used to establish the corner position.
  2. Description of monument and accessories set to perpetuate the corner position.
  3. Description of monument and accessories set to perpetuate the corner position.
  4. Sketch of corner, show all pertinent data which can best be shown in a sketch example, corner marking, accessories, etc.
  5. Certification must be signed and sealed by Land Surveyor registered in the State of Montana.
  6. Fill in Cross Index & Section Diagram at bottom of sheet.

**CERTIFIED CORNER RECORDATION**

SECTION CORNER SECTIONS 26, 27, 34, & 35 T. 11 N. R. 20 W., P.M.M., MISSOULA COUNTY, MONTANA

- RECORD #1:** (October 16, 1872) G.L.O. survey by George W. Irvine & Henry C. Rohleder. "Set a Granite 24 x 15 x 6 in. for corner to Sections 26, 27, 34 and 35."
- RECORD #2:** (October 15, 1879) G.L.O. survey by James M. Page. Found "... a granite stone ..."
- RECORD #3:** (November 2, 1967) Corner Recordation form #265407. "Set an 18" "T" Batheley iron 1/2" below the road surface...scribed "RM" references trees..."
- RECORD #4:** (January 23, 1976) Certificate of Survey #788. "Found 'T' iron...also found 1 1/2" aluminum capped rebar...marked 27/26." Used found "T" iron as the section corner.
- RECORD #5:** (March 15, 1989) Corner Recordation form Micro Bk. 291, page 352. Set an 8" well casing over the found 1-1/2" aluminum cap.
- FOUND:** (April 22, 1998) An 18 inch "T" iron with no cap, upright and stable, 12" below gravel road surface. A found 1-1/2" aluminum cap, 15" below gravel road surface bears S 36° W, 1.98 feet. RECORD #5 was determined to be in error. See RECORD #3.
- SET:** (April 22, 1998) Replaced "T" iron with a 5/8" x 24" rebar with a 3-1/4" aluminum cap, marked as shown, 6" below gravel road surface. Placed 8" diameter x 12" well casing over monument. Removed the well casing over the found 1-1/2" aluminum cap, leaving the cap in place.
- ACCESSORIES:** A found 15" cottonwood bears N 16° W, 62.3 feet.  
A found 30" ponderosa pine bears N 86° E, 172.2 feet.  
A found 14" ponderosa pine bears S 62° E, 110.3 feet.  
A found P-K nail 2 feet up the east side of an 8" diameter wooden fence post bears S 19° W, 27.1 feet.

See diagram below.



**CERTIFICATION**

I, Steve E. Niday, certify the information shown herein is true and correct.

Signature of Steve E. Niday

Steve E. Niday, Jr.  
1. Horace S. Brown, Jr. had some rebar set in 1967. I found it in 1998. I used it as the "Corner" recordation for 26, 27, 34 and 35.

Date: 4/22/98 Reg. No. 51160  
Employer: Missoula County Surveyor's Office

**SECTIONS**

27	26
34	35

Corner this form 544-0051

Office of Clerk and Recorder, County of Missoula, State of Montana. This 'corner record' was filed for record on 6-8-98 @ 8:29 AM.

Index, plat and is assigned book No. 544, page No. 51.

VICKIE M. ZEIER  
County Official

Cross Index No. V-17, T. 11 N. R. 20 W., P.M.M.

9814443