

Missoula County Control Point Datasheet

Monument Description: 2-1/2" Brass Cap 4124S

Project Name: ALL

Station Description: Section Corner

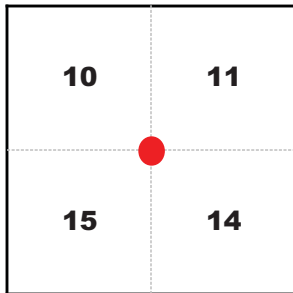
Date Visited: July 28, 2010

Monument Stability: B GPS Visibility: A

Observer: SEN - CLG

Quad. Name: Florence

T. 11 N. R. 20 W.



NAD 83 (2007) Lat/Long Position

46°43'07.870"N

114°05'16.854"W

NAVD 88 Elevation: 3200.7 sft.

Notes:

Photo of Monument



Photo Looking East



Photo Looking South

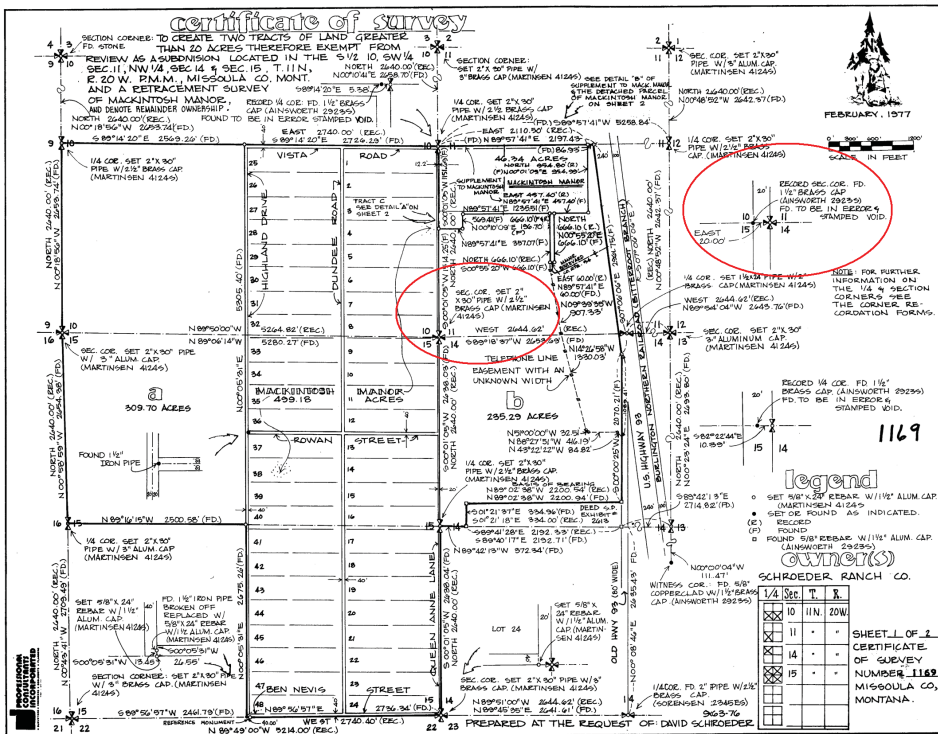


Point # 5858

To Reach: 2wd access.



Map of Area



Corner Recordation Form or Other Supporting Document

Point # 5858