

Missoula County Control Point Datasheet

Monument Description: 3" Aluminum Cap 4124S

Project Name: All

Station Description: 1/4 Corner

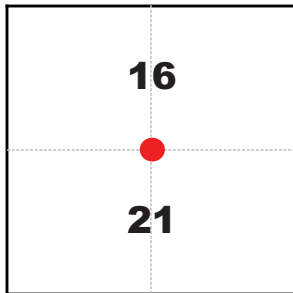
Date Visited: Sept. 14, 2010

Monument Stability: C GPS Visibility: B

Observer: SEN - CLG

Quad. Name: Clinton

T. 12 N. R. 17 W.



NAD 83 (2007) Lat/Long Position

46°47'33.230"N

113°44'38.434"W

NAVD 88 Elevation: 3436.0 sft.

Notes:

Photo of Monument



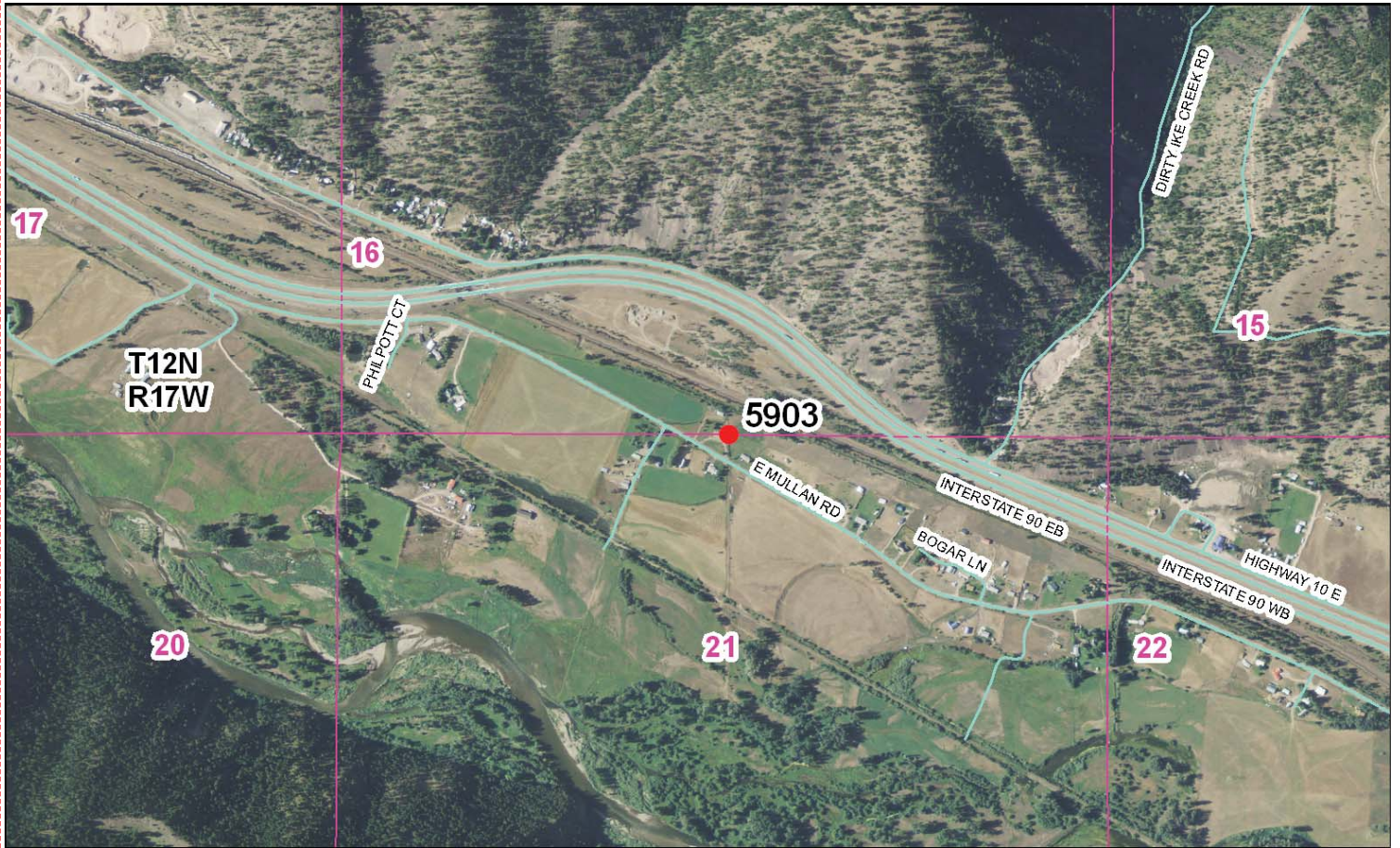
Photo Looking North



Photo Looking South



To Reach: 2wd access to within 50 feet.



Map of Area

318-2365

- INSTRUCTIONS:**
1. Use and/or subsequent record used to establish the position.
 2. Description of monument and accessories set to perpetuate the corner position.
 3. Sketch of corner, show all pertinent data which can best be shown in a sketch, example, corner marking.
 4. Certification must be signed and sealed by Land Surveyor registered in the State of Montana.
 5. Fill in Cross Index & Section Diagram at bottom of sheet.

CERTIFIED CORNER RECORDATION

Corner 1 corner sections 16 & 21 T. 12N. R. 17W. P.M. Missoula County

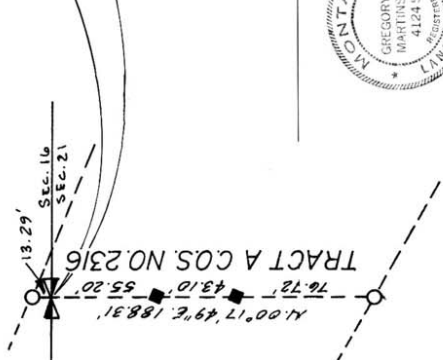
G.L.O. Record - A wash boulder, 15X8X5 ins., 10 ins. in the ground marked $\frac{1}{2}$ on N. face; raised a mound of stone, 2 ft. base, $1\frac{1}{2}$ ft. high, N of corner. Pits impracticable

Tahija Record - Found no evidence of original corner, area has been farmed removing all evidence. Set a 2 ft. 5/8" rebar with a 1 1/2" aluminum cap, raised a mound of stone around the cap. No trees in area, all farm land. set 2 ft. 5/8" rebar with a 1 1/2" plastic cap stamped "Tahija 3104S S 0°17'W 175.8 ft and N 0°17'E. 13.3 ft. (this record was filed June 7, 1974 as document No. 349105)

Found - No evidence of rebar and aluminum cap set by Tahija, farmed out again. Found 4th plastic caps as shown in Tahija record and on Certificate of Record No. 726. reestablished corner position by proportionate distance between plastic caps and set 2"x30" Iron Pipe with 2 1/2" Missoula County Aluminum Cap stamped as shown below, also set 5/8"x24" rebar with 1 1/2" VPC stamped Martinsen 4124S S.09°17'49"W. 55.20 ft. and 98.30 ft. as shown on Certificate of Survey No. 2316.

Date of Work - January 4, 1980

90 OCT 3 PM 2 42

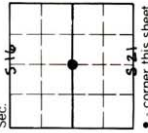


CERTIFICATION
I certify the information shown herein is true and correct.
Signature: Gregory S. Martinsen
Registered Professional Land Surveyor
Date: 10/01/80 Reg. No. 4124S
Employer: MarLinsen, Surveys



SKETCH OF CORNER

Office of Clerk and Recorder, County of Missoula. This "corner record" was filed for record on Oct 3, 1980 at 2:42 PM was noted on the cross-index plat and is assigned PLS 110 MISSOULA COUNTY CLERK, in book No. 318 Wick by Gregory Martinsen County Official
40 Fee
CR



9016946
Cross Index No. M-11 T. 12N. R. 17W. 1980
Adopted July 1, 1981, Montana Board of Professional Engineers & Land Surveyors

Corner Recordation Form or Other Supporting Document

Point # 5903