

# Missoula County Control Point Datasheet

Monument Description: 3-1/4" BLM Brass Cap

Project Name: All

Station Description: Section Corner, Common to Sections 14 & 23 Only

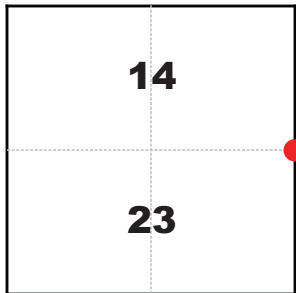
Date Visited: Sept. 15, 2010

Monument Stability: C      GPS Visibility: C

Observer: SEN - CLG

Quad. Name: Clinton

T. 12 N. R. 17 W.



### NAD 83 (2007) Lat/Long Position

46°47'31.721"N

113°41'21.239"W

NAVD 88 Elevation: 4601.1 sft.

### Notes:



### Photo of Monument



### Photo Looking East

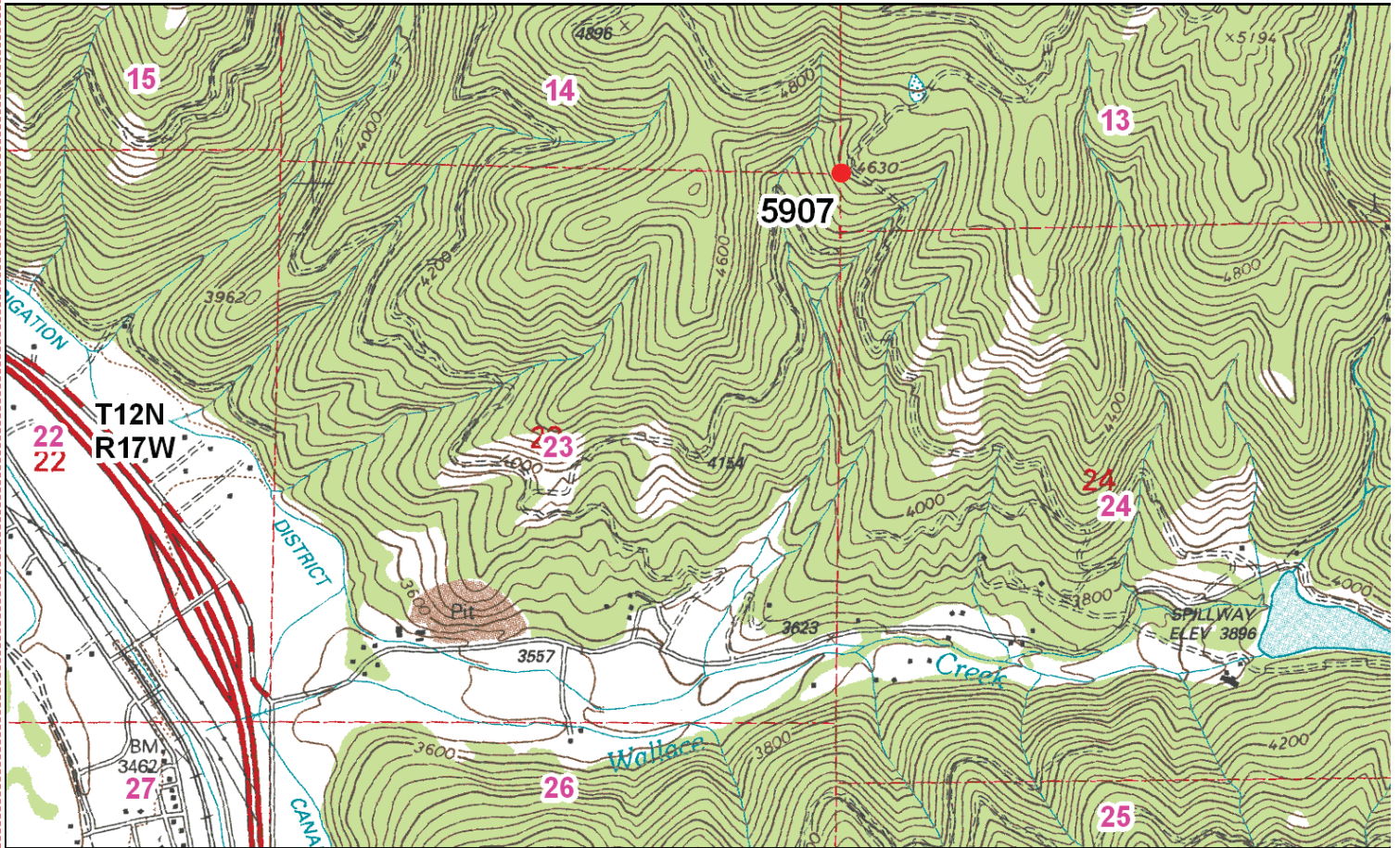


### Photo Looking South



Point # 5907

**To Reach:** 4wd access, to within 250 feet of the monument.



Map of Area

NO CORNER RECORDATION FORM

Corner Recordation Form or Other Supporting Document

Point # 5907