

Missoula County Control Point Datasheet

Monument Description: 2-1/2" Brass Cap 9747LS

Project Name: ALL

Station Description: Section Corner

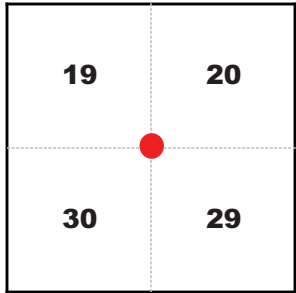
Date Visited: July 21, 2010

Monument Stability: C GPS Visibility: B

Observer: SEN - CLG

Quad. Name: Blue Mountain

T. 12 N. R. 20 W.



NAD 83 (2007) Lat/Long Position

46°46'35.499"N

114°09'01.245"W

NAVD 88 Elevation: 3891.7 sft.

Notes:

Photo of Monument



Photo Looking South

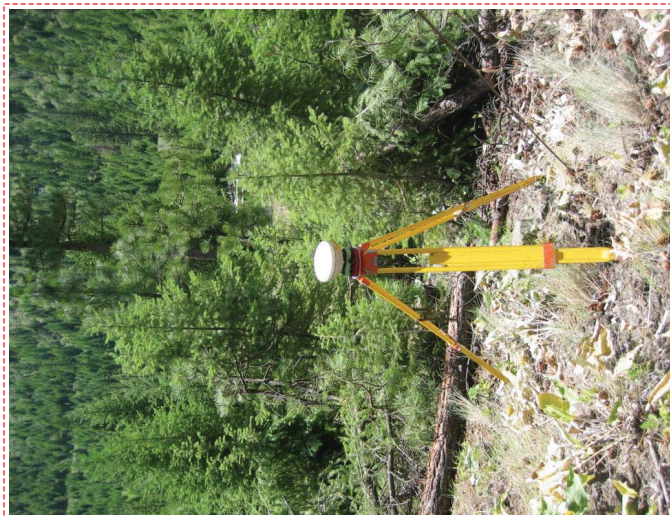
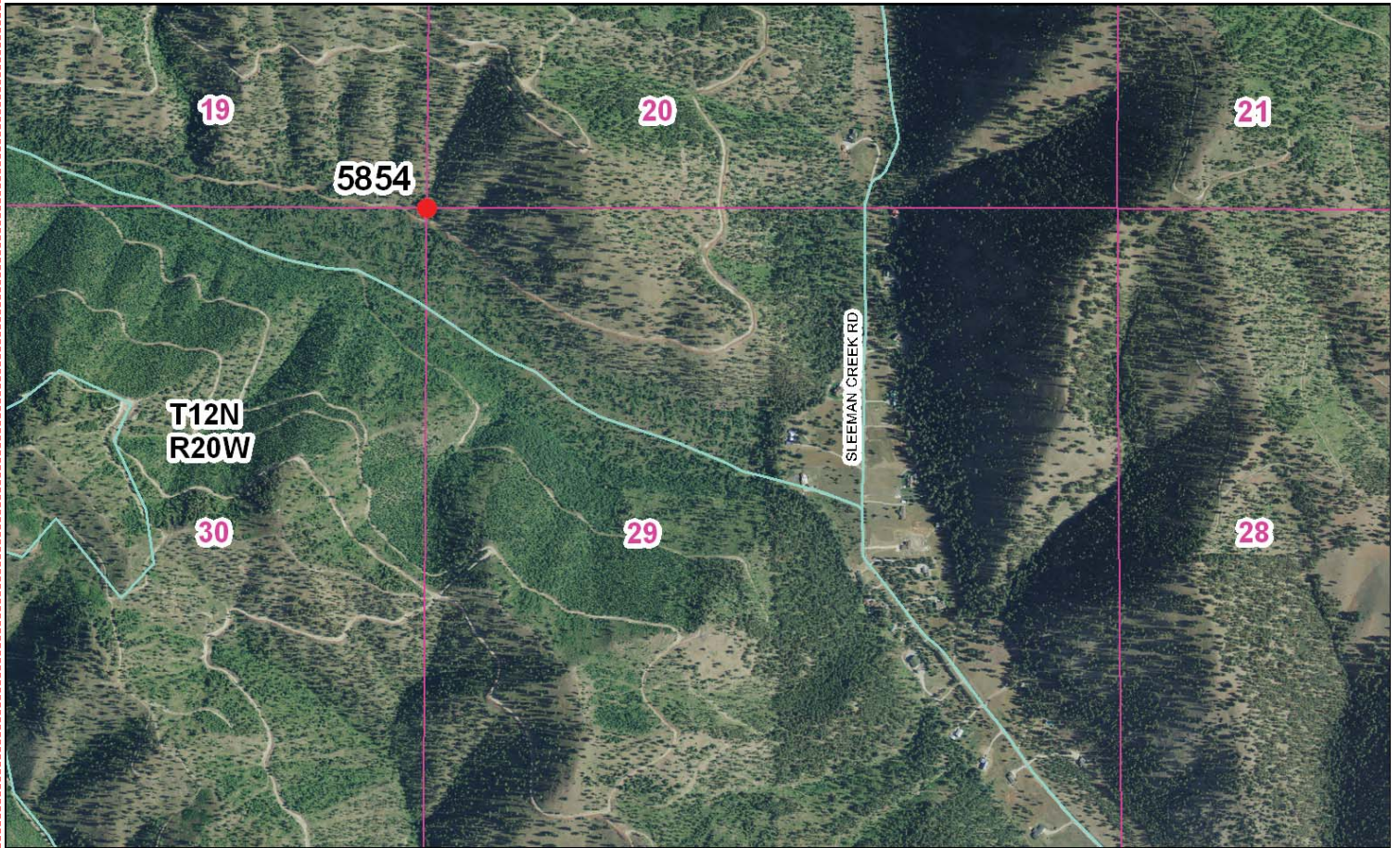


Photo Looking West



To Reach: 2wd access to within 150 feet of the monument, need Plum Creek key.



Map of Area

100-2023

- INSTRUCTIONS**
1. Original plat or subsequent record must be filed.
 2. Description of evidence must, under interpretation in the corner, state method of establishing (set or substituted) corners.
 3. List of monuments and accessories set by particular surveyor.
 4. Sketch of corner, show all pertinent data which can best be shown in a sketch (example, corner marking, topography, line points of accessories, etc.).
 5. Land Surveyor registered in the State of Montana.
 6. Fill in Cross Index & Section Diagram at bottom of sheet.

CERTIFIED CORNER RECORDATION

Corner Southwest Cor. Sec. 20, T. 12N, R. 20W, PMM, Missoula County
 440-1722
 Records: Set a pine post 3ft long, 4 in. square 24 in. in the ground for
 Cor. of Secs. 19, 20, 29, 30, marked "T12N, S20°0'0" N E
 "R20W S29°10'0" ON SE "530' on SW and 519' on NW faces,
 with 2 notches on S, and 5 notches on E edges, from which
 a pine, 22" diam. bears N82°50'W (9.8 feet) 30 lbs. dist. marked
 "T12N R20W S19 BT"
 A pine 24" diam bears S70°30'W 70 lbs (60.2 feet) dist marked
 "T12N R20W S30 BT"
 A pine 28" diam bears S30°E 77 lbs (52.1 feet) dist marked
 "T12N R20W S29 BT"
 A pine 18" diam bears N50°0'E 122 lbs (80.5 feet) dist marked
 "T12N R20W S20 BT"
 Co. S. No. 2385
 Set 5/8" x 24" pin with 1/4" ypc marked "Anderson 3096.5"

Found: No evidence of the original. One Post on the rebar with
 ypc were found. 2 original Bearing Trees were found. They
 intersect the distances (Record) from the BTs. At the corner
 position I set a 2"x30" pipe with a 2" brass cap stamped
 as shown below 6" above ground. I raise a mound of stone
 3 feet diam around monument.

Orig. BT's: A pine stump 18" diam, ("T12N R20W S20 BT" - visible scribings) bears
 N 53°15' E 52.1 Feet
 A pine stump 34" diam, ("S29 BT" - visible scribings) bears S30°30'
 52.1 Feet
 A rotten stump (22" diam, (no visible scribings) bears S72°30'W 48.9 feet
 (probably a third BT)
 New Pin: A Fir 12" diam bears N22°W 16.7 feet blazed & scribed "RM" 1 53
 A Fir 18" diam bears S13°E 24.2 feet blazed & scribed "RM"
 A pine 15" diam bears S56°W 54.0 feet blazed & scribed "RM"

T12N R20W

519 520
536 529
9742 65
1993

SKETCH OF CORNER

OFFICE OF THE CLERK AND RECORDER, COUNTY OF MISSOULA, MONTANA

DATE: 12/15/23, BOOK NO. 974265

EMPLOYEE: Territorial Land Surveyors

Office of Clerk and Recorder, County of Missoula

record" was filed for record on November 16, 1993 @ 1:53 PM

was noted on the cross-index plat and is assigned page No. 2023, in

book No. ALCO 440-1722, by [Signature] County Clerk

9330597

Corner this sheet 440, PG 0003

Corner Recordation Form or Other Supporting Document