

Missoula County Control Point Datasheet

Monument Description: 3-1/4" Aluminum Cap 10998S

Project Name: All

Station Description: Standard Corner

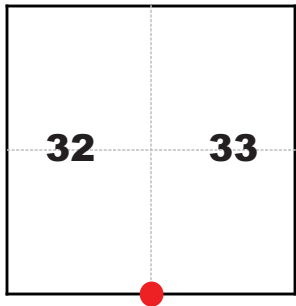
Date Visited: Sept. 7, 2010

Monument Stability: D GPS Visibility: B

Observer: SEN - CLG

Quad. Name: Southeast Missoula

T. 13 N. R. 18 W.



NAD 83 (2007) Lat/Long Position

46°50'03.189"N

113°53'30.170"W

NAVD 88 Elevation: 5208.8 sft.

Notes:

Photo of Monument



Photo Looking North

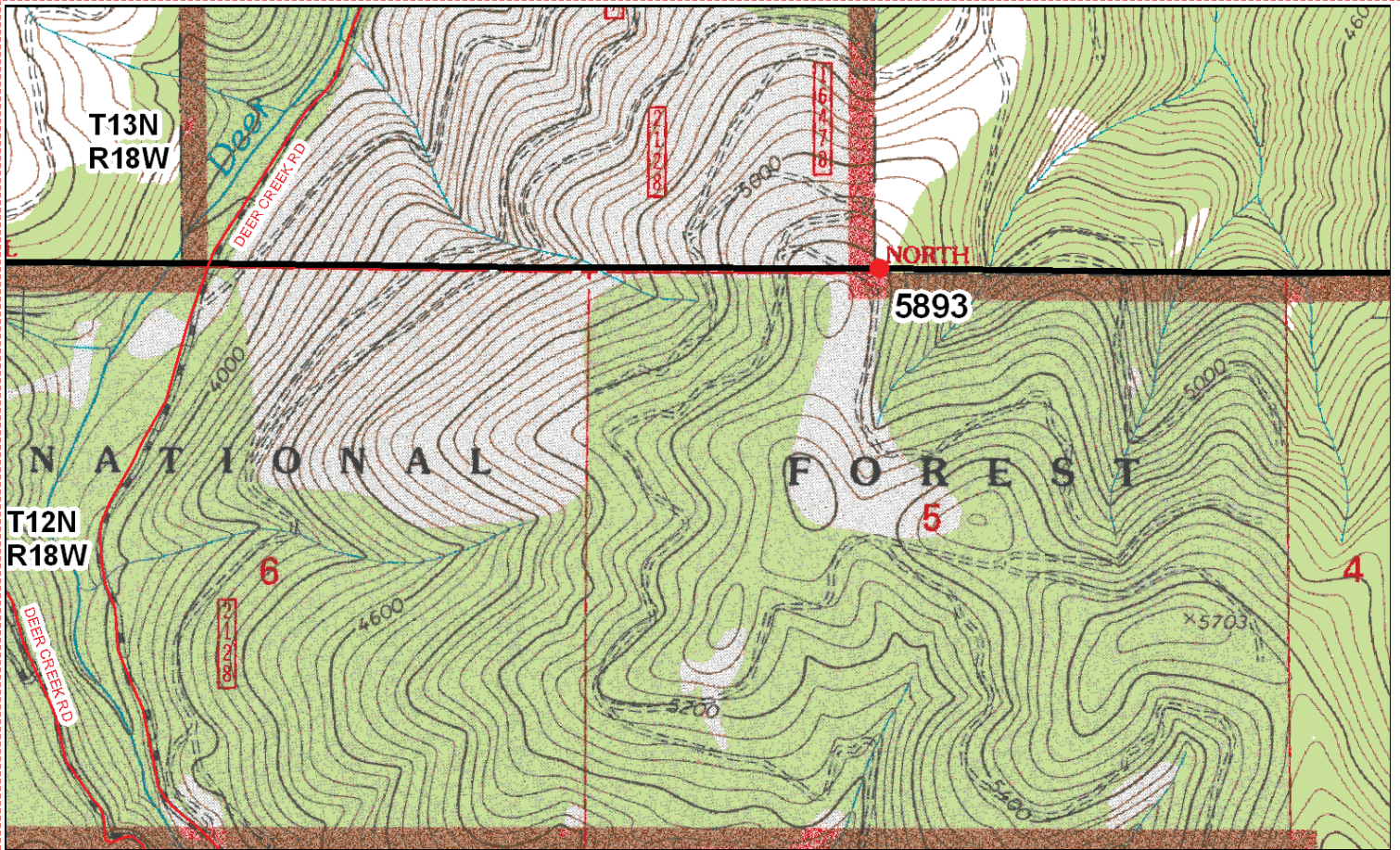


Photo Looking West



Point # 5893

To Reach: 2wd access with Nature Conservancy key.



Map of Area

- INSTRUCTIONS**
1. Check the following information to ensure the accuracy of the corner position.
 2. Description of monument and accessories set to perpetuate the corner position.
 3. Description of monument and accessories set to perpetuate the corner position.
 4. Description of monument and accessories set to perpetuate the corner position.
 5. Description of monument and accessories set to perpetuate the corner position.
 6. Fill in Cross Index & Section Diagram at bottom of sheet.

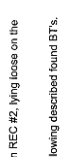
CERTIFIED CORNER RECORDATION

Standard Corner of Sections 32 and 33
T. 13 N. R. 18 W. P.M.M. Missoula County, Montana

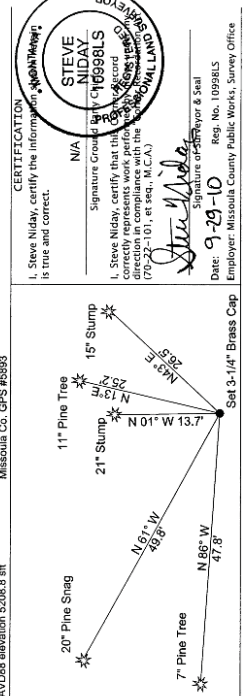
RECORD #1: (October, 1907) G.L.O. survey by Edgar Ford
"Set a granite stone, 15x10x10 ins., 10 ins. in the ground; for standard cor. of secs. 32 and 33, marked S.C. on N., with 4 grooves on E. and 2 grooves on W. faces, from which
A 1/2" 12 ins. diam., bears N 40° E., 39 lks. dist., marked T. 13 N., R. 18 W., S. 33, B. T.
A 1/2" 12 ins. diam., bears N 10° W., 27 lks. dist., marked T. 13 N., R. 18 W., S. 32, B. T."

RECORD #2: (1965) B.L.M. monumentation by Hugh Crawford and Roy G. Leedy
"The standard cor. of secs. 32 and 33, on the S. 33y, of the T. 13, monumented with a granite stone, 16 x 10 x 10 ins., firmly set and marked SC on the N. face, 4 notches on the E. and 2 notches on the W. edges, and witnessed by the original bearing trees.
SC
Set an iron post, 30 ins. long, 2 1/2 ins. diam., 20 ins. in the ground, with brass cap mkd. T13N18W S32 S33 1985
from which
The original bearing trees:
A 1/2" 14 ins. diam., bears N. 40° E., 39 lks. dist., mkd. with T13N R18W visible. (Record N. 10° W., 21 lks.)
A 1/2" 14 ins. diam., bears N. 40° E., 39 lks. dist., mkd. with T13N R18W visible. (Record N. 10° W., 21 lks.)
Bury the original stone alongside the iron post."

RECORD #3: (December, 1980) Corner Recordation Form #484262 by Missoula County
"FOUND: A 3 1/8 ins. Brass Cap on iron pipe marked as shown.
A Douglas Fir stump, 18 ins. diam., x 2 1/2 ft., bears N17° E., (1985 rec. 134° W), 13.7 ft. (rec. 21 lks.) scribed T13N, R18W, S32, B.T.
SET: Left brass cap in place.
A Ponderosa Pine, 17 ins. diam., bears N61° W, 49.8 ft. scribed R.M.
A Ponderosa Pine, 7 ins. diam., bears N13° E., 25.2 ft. scribed R.M.
Missoula County yellow location tags affixed to B.T.'s
FOUND: (September 7, 2010). An iron post, 30 ins. long, 2 1/2 ins. diam., with a brass cap marked as shown in REC #2, lying loose on the ground, near a mound of stone.
SET: A 5/8" x 2 1/4" rebar, with a 3-1/4" aluminum cap, marked as shown below, at record distances, from the following described found B.T.'s.
A Ponderosa Pine, 11 ins. diam., bears N 13° E., 25.2 ft., scribed RM.
A Douglas Fir stump, 19 ins. diam., bears N 49° E., 29.5 ft., with scribing visible. (REC #3, N 41° E)
A Ponderosa Pine, 17 ins. diam., bears N 61° W, 49.8 ft., with scribing visible. (REC #3, N 61° W)
A Douglas Fir stump, 21 ins. diam., bears N 01° W, 13.7 ft., with scribing visible.
New BT:
A Ponderosa Pine, 7 ins. diam., bears N 65° W, 47.8 ft., scribed RM, with BT tag attached.



Positional information determined by static GPS observations to MISOL, MTJUN, and J510, using GEOID 2008 for elevation.
NAD 83 (2007) SPC Intl. FL
4650933 18920° W
870903 24 E
Missoula Co. GPS #68993
MISSOULA COUNTY SURVEYOR
19885
SET 3 1/4" AL CAP



Office of Clerk and Recorder, County of Missoula, Recording Information.

201019173 B: 866 P: 1265 Pages: 1
10/04/2010 10:08:33 AM
Missoula County Clerk & Recorder
Vickie M. Carson, County Clerk & Recorder

Cross Index No. Z-09 T. 13 N., R. 18 W. P.M.M.