

Missoula County Control Point Datasheet

Monument Description: Stone w/ "x" chiseled on top

Project Name: All

Station Description: 1/4 Corner

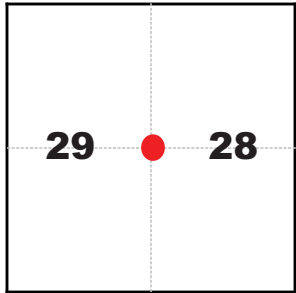
Date Visited: Sept. 7, 2010

Monument Stability: C GPS Visibility: C+

Observer: SEN - CLG

Quad. Name: Southeast Missoula

T. 13 N. R. 18 W.



NAD 83 (2007) Lat/Long Position

46°51'24.384"N

113°53'29.555"W

NAVD 88 Elevation: 3691.2 sft.

Notes:

A 3-1/4" aluminum cap, marked 8238, is 0.6' west of the original stone.

Photo of Monument



Photo Looking South

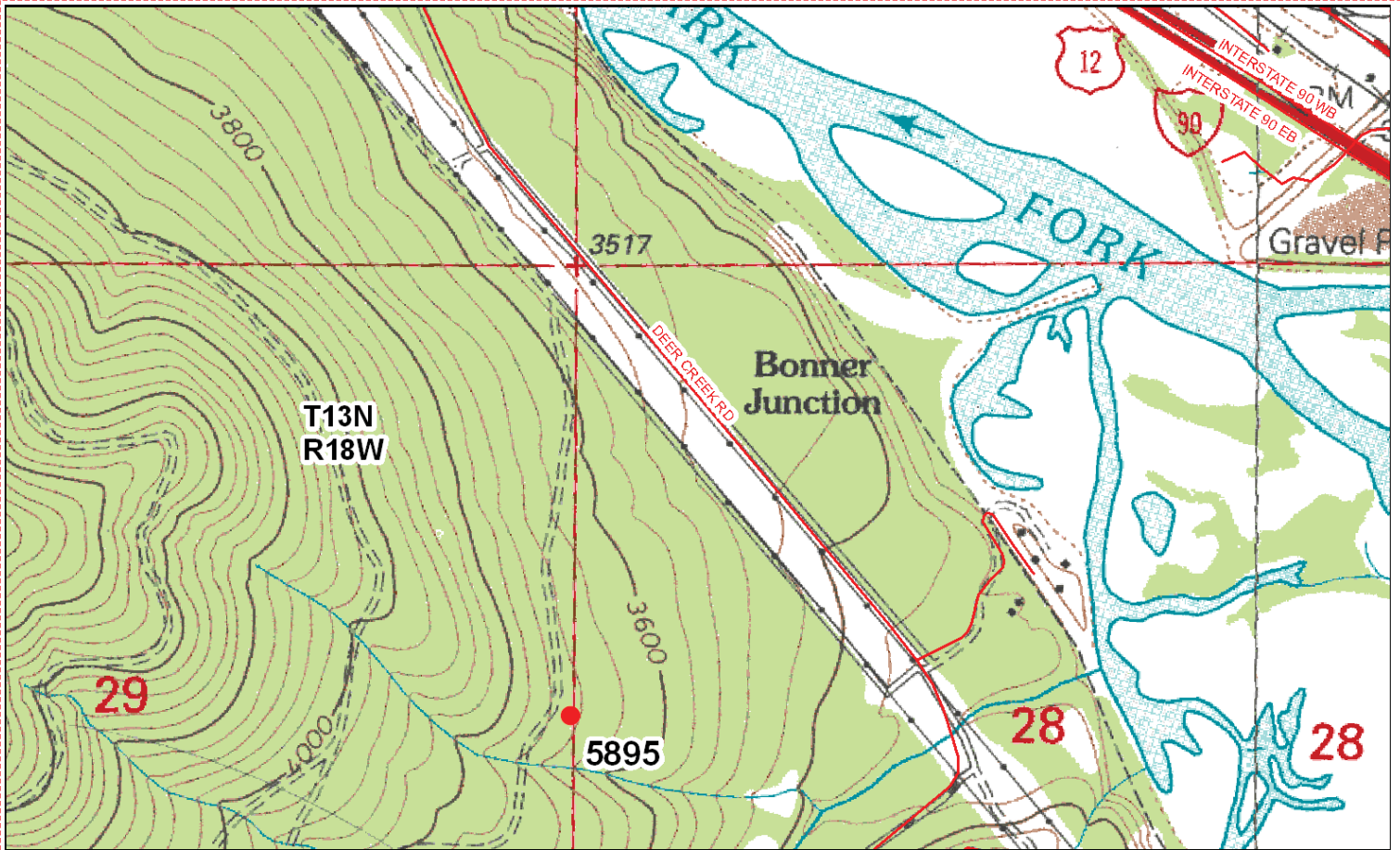


Photo Looking West



Point # 5895

To Reach: 2wd access with Nature Conservancy key.



Map of Area

8 27-1706

CERTIFIED LAND CORNER RECORDATION

DESCRIPTION OF CORNER EVIDENCE FOUND, AND ORIGINAL RECORD (IF KNOWN)

Desc: At the Quarter corner common to sections 28 and 29 T.13N., R.18W., P.M.M., Missoula county found stone properly marked and firmly set as described in the notes by Willgott Klingberg US Deputy Surveyor December 31, 1892.
Rec: A red Sandstone 20"x12"x8" 15 ins in the ground for quarter section corner mark $\frac{1}{4}$ on the W. face from which a fir 15 in diam. bears S. 21° 45' E. 28 lks. dist. marked $\frac{1}{4}$ S. BT. A fir 20 inches in diam. bears N. 22° 30' E. 38 lks dist. marked $\frac{1}{4}$ S. BT.
Found: A red sandstone 10"x6" for $\frac{1}{4}$ cor to sections 28 and 29 marked $\frac{1}{4}$ on W. side. The stump remains of a Douglas fir bears S. 22° E. 18.5 feet.

DESCRIPTION OF MONUMENT AND ACCESSORIES ESTABLISHED FIELD CHECK TO PERPETUATE THE ORIGINAL LOCATION OF THIS CORNER:

Set: Left stone in place, set 3" diam. aluminum cap on a 2 1/2"x30" aluminum pipe adjacent to W. side of the stone in a mound of stones 9.60 feet distant. A long Needle pipe bears N 54° 0' W 10.4 feet distant. Yellow location tag affixed to tree date a Missoula Yellow location tag affixed to tree date 12/09/80 S 80° E 26.2 feet 12" diam. Long Needle Pine has been blazed on the W. side now elligible tree also has Missoula County Yellow location tag affixed.

SKETCH, WITH COURSE AND DISTANCE TO ADJACENT CORNERS IF DETERMINED IN THIS SURVEY. (MAY SKETCH OR PASTE REPRODUCTION ON REVERSE SIDE)

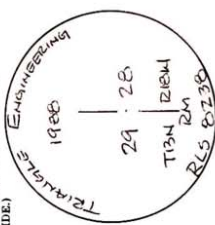
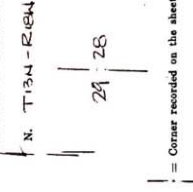


DIAGRAM OF CORNER:



I, Thomas L. Rasmussen, certify that the information shown herein is true and correct.
 Signature of Ground Party Chief
 I, Thomas L. Rasmussen, certify that I have carefully performed or reviewed the recording form and the information reported on this recording form and approve the same.
 Signature of Surveyor

Office of Clerk and Recorder, County of Missoula
 This "corner record" was filed for record on the 12 day of Apr 1988 by Thomas L. Rasmussen County Clerk.
 assigned page No. 1206, in book No. 327 Micro
 CR No. face Cross Index No. T-9 T. 13N R. 18W P.M.M. 327-1706