

# Missoula County Control Point Datasheet

Monument Description: 1-1/2" Aluminum Cap 2923S

Project Name: All

Station Description: 1/4 Corner

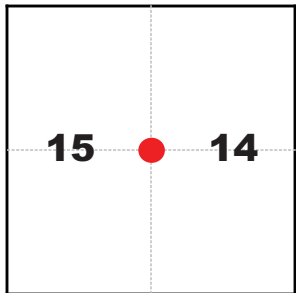
Date Visited: Sept. 2, 2010

Monument Stability: C+      GPS Visibility: C+

Observer: SEN - CLG

Quad. Name: Blue Point

T. 13 N. R. 18 W.



### NAD 83 (2007) Lat/Long Position

46°53'06.207"N

113°50'58.262"W

NAVD 88 Elevation: 3403.9 sft.

Notes:

Photo of Monument



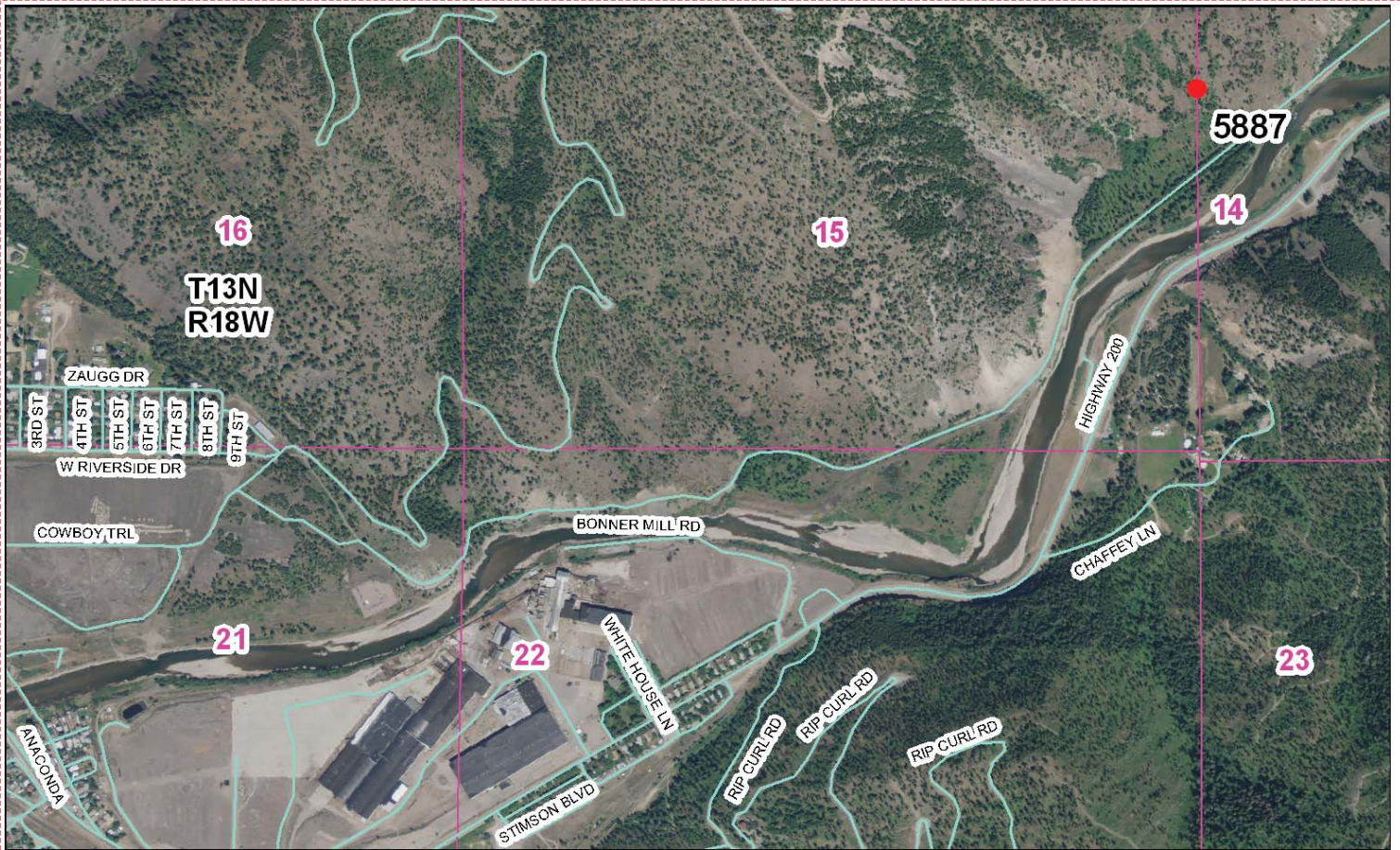
Photo Looking East



Photo Looking South



**To Reach:** 2wd access to within 350 feet of the monument.



Map of Area

CEF TIED LAND CORNER RECORDS ON BOOK 437 PAGE 1362

DESCRIPTION OF CORNER EVIDENCE FOUND, AND ORIGINAL RECORD (IF KNOWN)  
 At the 1/4 corner of Sections 14 and 15, T.13 N., R.18 W., P.M.M., Missoula County, Montana,  
 RECORD: A shale stone 16x9x4 in., 11" in the ground marked 1/4 on West face, from which:  
 A fir 19" dia. bears N.20°W., 16 1/4s.  
 A pine 15" dia., bears S.21-1/2°E., 30 1/4s.  
 WE FIND: 2 original B.T.'s and pulled in position at distance-distance intersection.

DESCRIPTION OF MONUMENT AND ACCESSORIES ESTABLISHED TO PERPETUATE THE ORIGINAL LOCATION OF THIS CORNER:  
 Date of work: 7/28/78  
 TO PERPETUATE THIS CORNER WE: Set a 5/8" x 24" rebar 20" in the ground and affixed a 1-1/2" alum. cap. No new R.M.'s were set:  
 Original BT 19" fir stump bears N.45°W., 10.56 feet  
 20" pine with Forest Service Location Poster bears S.6°E., 19.8 feet.

Variance Used: 18-1/2"  
 SKETCH, WITH COURSE AND DISTANCE TO ADJACENT CORNERS IF DETERMINED IN THIS SURVEY.  
 (MAY SKETCH OR PASTE REPRODUCTION ON REVERSE SIDE.)  
 See Certificate of Survey No. 475

DIAGRAM OF CORNER:  
 N.  
 A 15 14  
 I, Paul S. Long, Jr., certify that the information shown herein is true and correct.  
 Signature of Ground Party Chief  
 I, Richard Ahlsworth certify that I have carefully performed or reviewed the work done on the diagrammed corner as reported on this recordation form and I approve the same.  
 Signature of Surveyor  
 Registration Number 29235  
 SURVEYOR MISSOULA MONTANA

Recorder of Clerk and Recorder, County of \_\_\_\_\_  
 "former record" was filed for record on the \_\_\_\_\_ day of \_\_\_\_\_ 19\_\_\_\_, was noted on the cross-index plat and is recorded page No. \_\_\_\_\_ in book No. \_\_\_\_\_  
 9505596  
 County Official  
 Cross Index No. L-17 T-13N R-18W Mer.  
 REGISTERED AND FILED THIS INSTRUMENT FOR RECORD ON 08/27/1105 FOR BOOK A AND IT IS RECORDED IN BOOK 437 PAGE 1362 MISSOULA COUNTY MONTANA  
 ADDRESS: 437-1362  
 BY: Kellee Mac... CLERK REC'D

Corner Recordation Form or Other Supporting Document