

Missoula County Control Point Datasheet

Monument Description: 2-1/4" Brass Cap MSLA CO

Project Name: All

Station Description: Section Corner

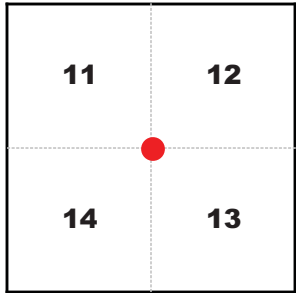
Date Visited: Sept. 2, 2010

Monument Stability: C+ GPS Visibility: B-

Observer: SEN - CLG

Quad. Name: Blue Point

T. 13 N. R. 18 W.



NAD 83 (2007) Lat/Long Position

46°53'32.511"N

113°49'42.078"W

NAVD 88 Elevation: 3347.2 sft.

Notes:

Photo of Monument



Photo Looking East

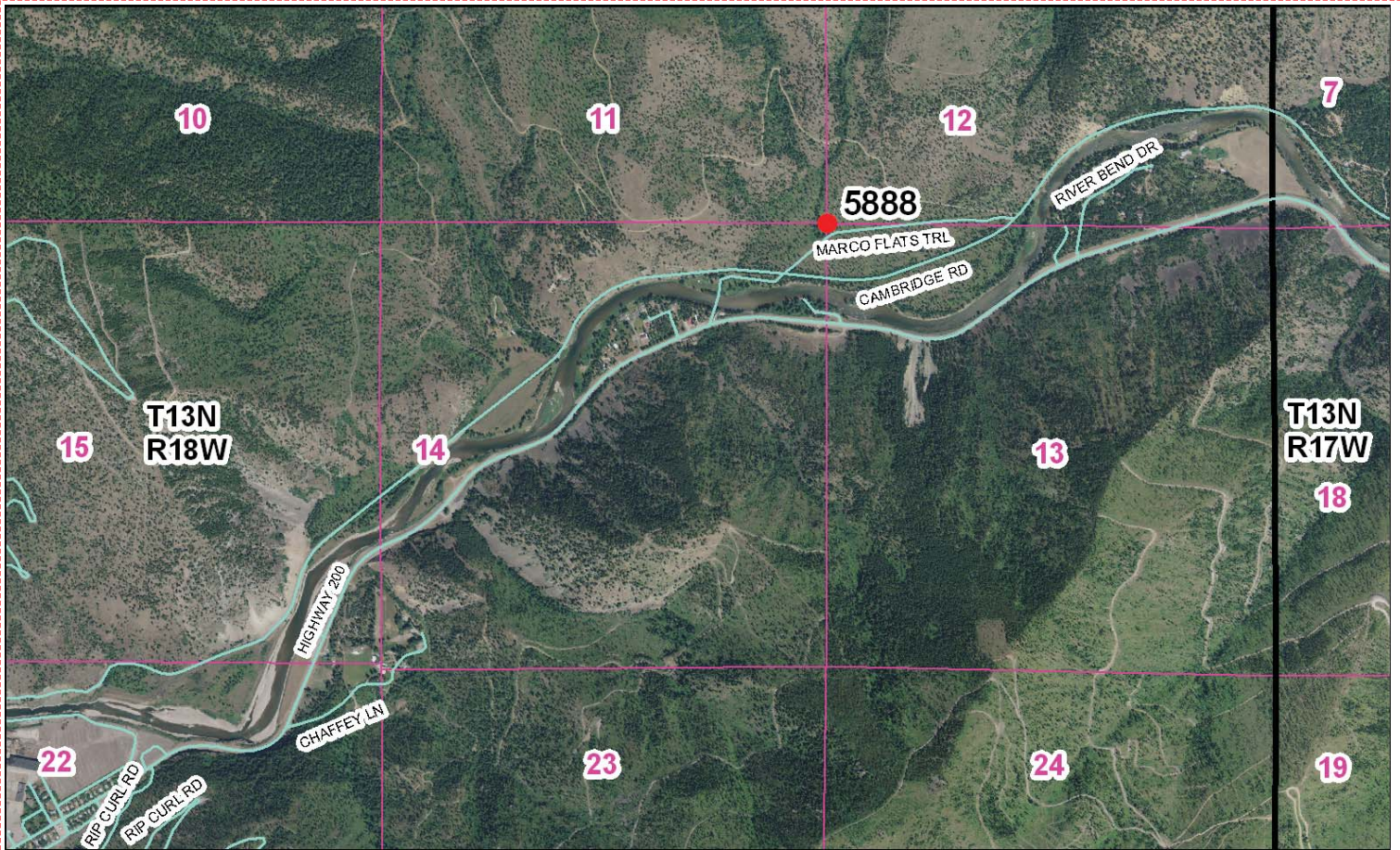


Photo Looking South



Point # 5888

To Reach: 2wd access.



Map of Area

CERTIFIED LAND CORNER RECORDATION

DESCRIPTION OF CORNER EVIDENCE FOUND, AND ORIGINAL RECORD (IF KNOWN)

Record: Set a Granite Stone 17 x 12 x 4 in. for Cor. 11, 12, 13, and 14
 A 12 in. Pine Bears N 72 1/4° E 18 lks. Dist.
 A 12 in. Pine Bears S 66 3/4° E 222 lks. Dist.
 A 17 in. Pine Bears S 83 1/2° W 223 lks. Dist.
 A 12 in. Pine Bears N 56° W 185 lks. Dist.

Found: (By Missoula County Survey Crew. Colin Geery Chief)

A 1 in. Pipe bent over for corner.
 A 30 in. Pine Bears N 72° E 119.0 ft. Scribed S
 A 30 in. Douglas Fir Bears S 82° W 177.0 ft. Scribed S-14
 A 30 in. Pine Bears N 36° W 123 ft. with Scar at Base.
 Old Stump. Roots remains Found S 66° 30' E a Distance of 147 ft.

DESCRIPTION OF MONUMENT AND ACCESSORIES ESTABLISHED TO PERPETUATE THE ORIGINAL LOCATION OF THIS CORNER:

Date of work, 8/4/76

Set: A 2 1/4 in. Brass Cap on 28 x 1 1/2 in Pine 24 in. in the Ground for Sec. Cor. Marked as Shown. (Colin Geery Set)

Reference:

A 12 in. Pine Bears S 86° E. 81.9 ft.
 A 14 in. Pine Bears N 10° W a Distance of 18.5 ft.
 Both Scribed R.M.
 Distances Measured to Center of Tree.



Brass Cap Marked as Shown.

SKETCH, WITH COURSE AND DISTANCE TO ADJACENT CORNERS IF DETERMINED IN THIS SURVEY. (MAY SKETCH OR PASTE REPRODUCTION ON REVERSE SIDE.)

Surveyor's Seal

I, Horace S. Brown Jr., certify that the information shown herein is true and correct.

Horace S. Brown Jr.
Signature of Ground Party Chief

Donald L. Ebbutt
Signature of Surveyor

I, Donald L. Ebbutt, certify that I have carefully performed or reviewed the survey and that the information reported on this recordation form and approves the same.

DIAGRAM OF CORNERS:
T-13N R-17W

Corner recorded on the sheet

For Missoula County **350789** Registration Number 3326-S

Office of Clerk and Recorder, County of Missoula, 9:55 AM
 This "corner record" was filed for record on the 12th day of November, 1976
 assigned page No. No File in book No. 13
 By Robert E. Adams, Deputy Clerk
 Cross Index No. 3-21 T. 13 N. R. 18 W. P. Mer.

Corner Recordation Form or Other Supporting Document