

Missoula County Control Point Datasheet

Monument Description: Stone w/ "x" chiseled on top

Project Name: All

Station Description: 1/4 Corner

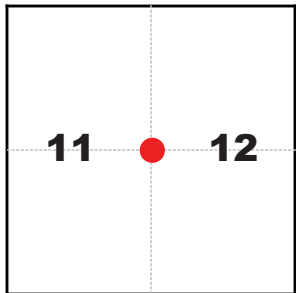
Date Visited: Sept. 2, 2010

Monument Stability: C GPS Visibility: B+

Observer: SEN - CLG

Quad. Name: Blue Point

T. 13 N. R. 18 W.



NAD 83 (2007) Lat/Long Position

46°53'58.436"N

113°49'42.279"W

NAVD 88 Elevation: 3952.5 sft.

Notes:

Photo of Monument



Photo Looking North

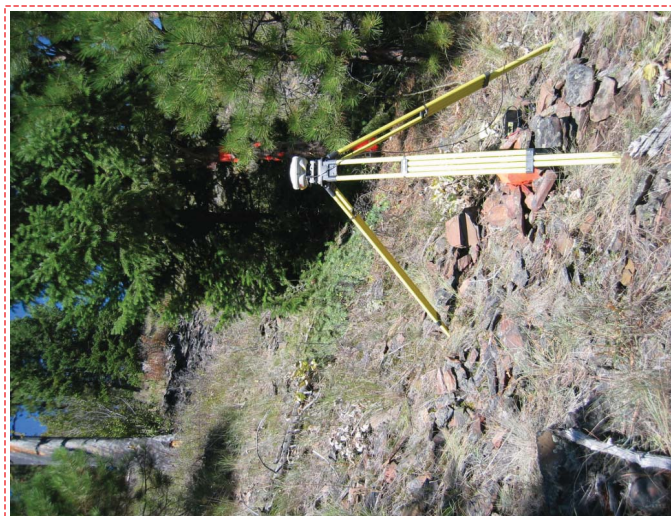
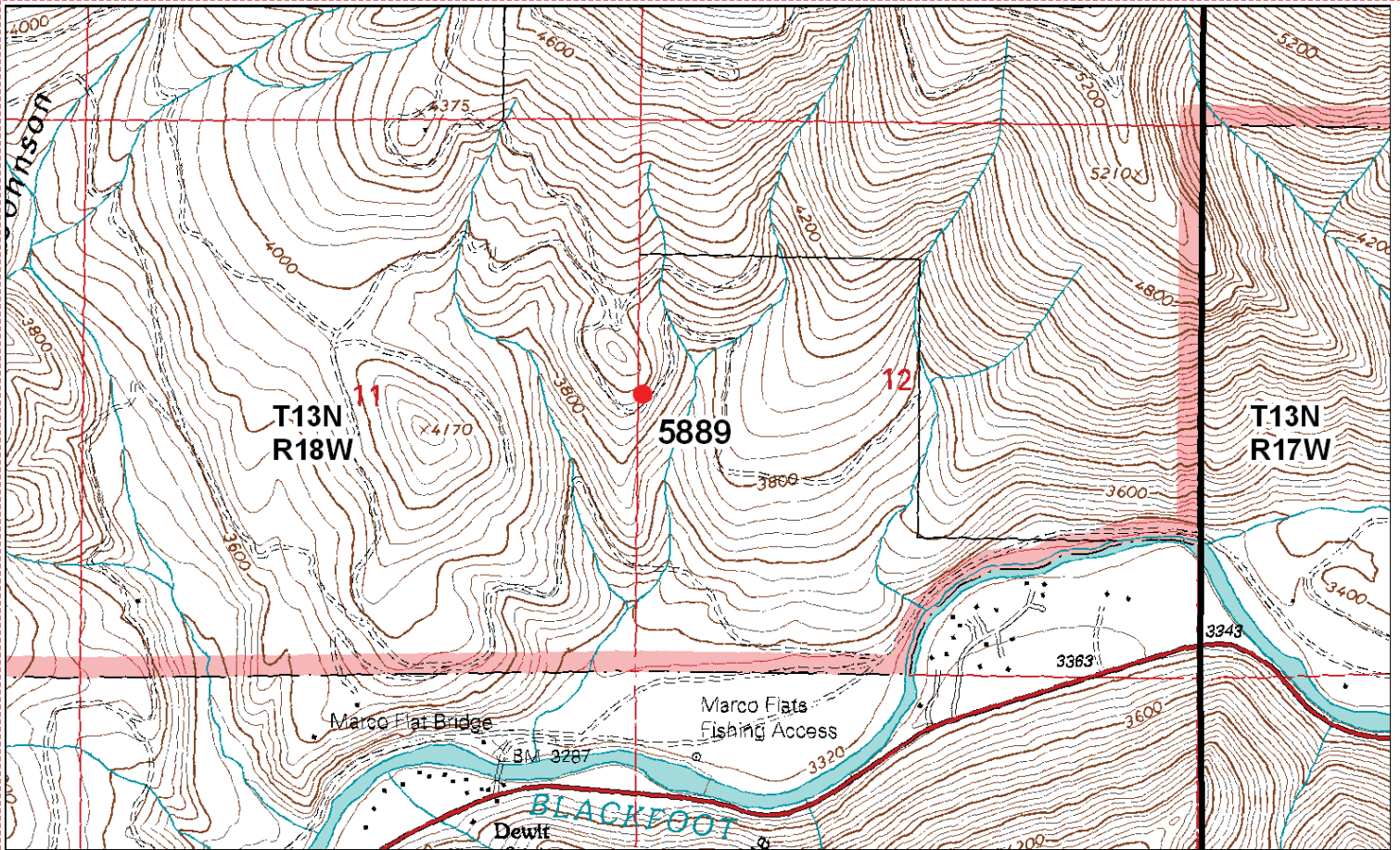


Photo Looking South



To Reach: 2wd access to within 50 feet of monument, with Plum Creek key.



Map of Area

- INSTRUCTIONS**
1. Obtain the number of subsequent record used to establish the corner position.
 2. Description of monument and accessories set to perpetuate the corner position.
 3. Description of monument and accessories set to perpetuate the corner position.
 4. Description of corner below all pertinent data which can best be shown in a sketch example, corner marking, accessories, etc.
 5. Certificate of registration in the State of Montana.
 6. Fill in Cross Index & Section Diagram at bottom of sheet.

CERTIFIED CORNER RECORDATION

1/4 Corner Common to Sections 11 and 12
T. 13 N. R. 18 W. P.M.M. Missoula County, Montana

RECORD: (September 3, 1903) G. L. O. survey by Charles E. Redfield and George W. Burns
"Set a shale stone, 20 x 8 x 4 ins., 15 ins. in the ground, for 1-4 sec. cor. marked 1-4 on W. face; from which

- A pine 20 ins. diam. bears N. 13° E., 80 lks. dist. marked 1-4 S 12 BT
- A pine 38 ins. diam. bears N. 31 1/2° W., 68 lks. dist. marked 1-4 S 11 BT"

FOUND: (September 2, 2010) A 8x5x8" stone, scribed 1/4 on the west face, in a mound of stone. The stone was leaning to the southeast, I uprighted the stone and rebuilt the mound of stone. Scribed an "1" on top of the found stone and painted it orange. From which:

Original Bearing Trees:

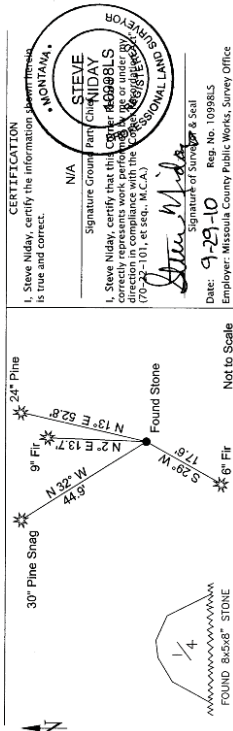
- A Ponderosa Pine, 24 ins. diam., bears N 13° E, 52.8 ft., with a healed over face and blaze.
- A Pine snag, 30 ins. diam., bears N 32° W, 44.9 ft., blazed and scribed 1/4 S 11 BT.
- (REC N 31 1/2° W)

New Bearing Trees:

- A Douglas Fir, 9 ins. diam., bears N 02° E, 13.7 ft., scribed RM.
- A Douglas Fir, 6 ins. diam., bears S 29° W, 17.6 ft., scribed RM.

BT tags were attached to the new bearing trees and the found 24 ins. pine tree.

NAD 83 (2007) Lat. Lon. NAD 83 (2007) SPC Intl. Ft. Positional information determined by static GPS observations, with ties to MSOL, MTUM, and J310, using GEOID 2009 for elevation.
46°53'58.4361"N 99°58'14.26 N
113°49'42.2787"W 887629.40 E
NAVD88 elevation 3952.5 sft Missoula Co. GPS #5889



CERTIFICATION
I, Steve Niday, certify the information submitted herein is true and correct.
Signature of Surveyor & Seal
Date: 9-29-10 Rep. No. 10086LS
Employer: Missoula County Public Works, Survey Office

Office of Clerk and Recorder, County of Missoula, Recording Information.

201019172 is the correct recording information for this document.
B: 866 P: 1285 Pages: 1
MISSOULA COUNTY RECORDER

Sections: 11 • 12
● corner this sheet

Cross Index No. G-21 T. 13 N., R. 18 W. P.M.M.