

# Missoula County Control Point Datasheet

Monument Description: 3" Aluminum Cap 2923S

Project Name: All

Station Description: Corner to Sections 19 and 30 Only

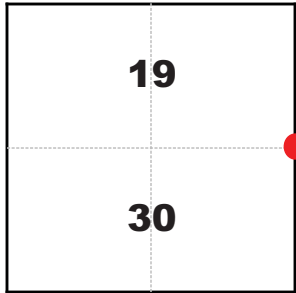
Date Visited: June 29, 2010

Monument Stability: C+      GPS Visibility: C

Observer: SEN - CLG

Quad. Name: Blue Mountain

T. 13 N. R. 20 W.



### NAD 83 (2007) Lat/Long Position

46°51'46.225"N

114°09'57.046"W

NAVD 88 Elevation: 4067.5 sft.

Notes:

Photo of Monument



Photo Looking North

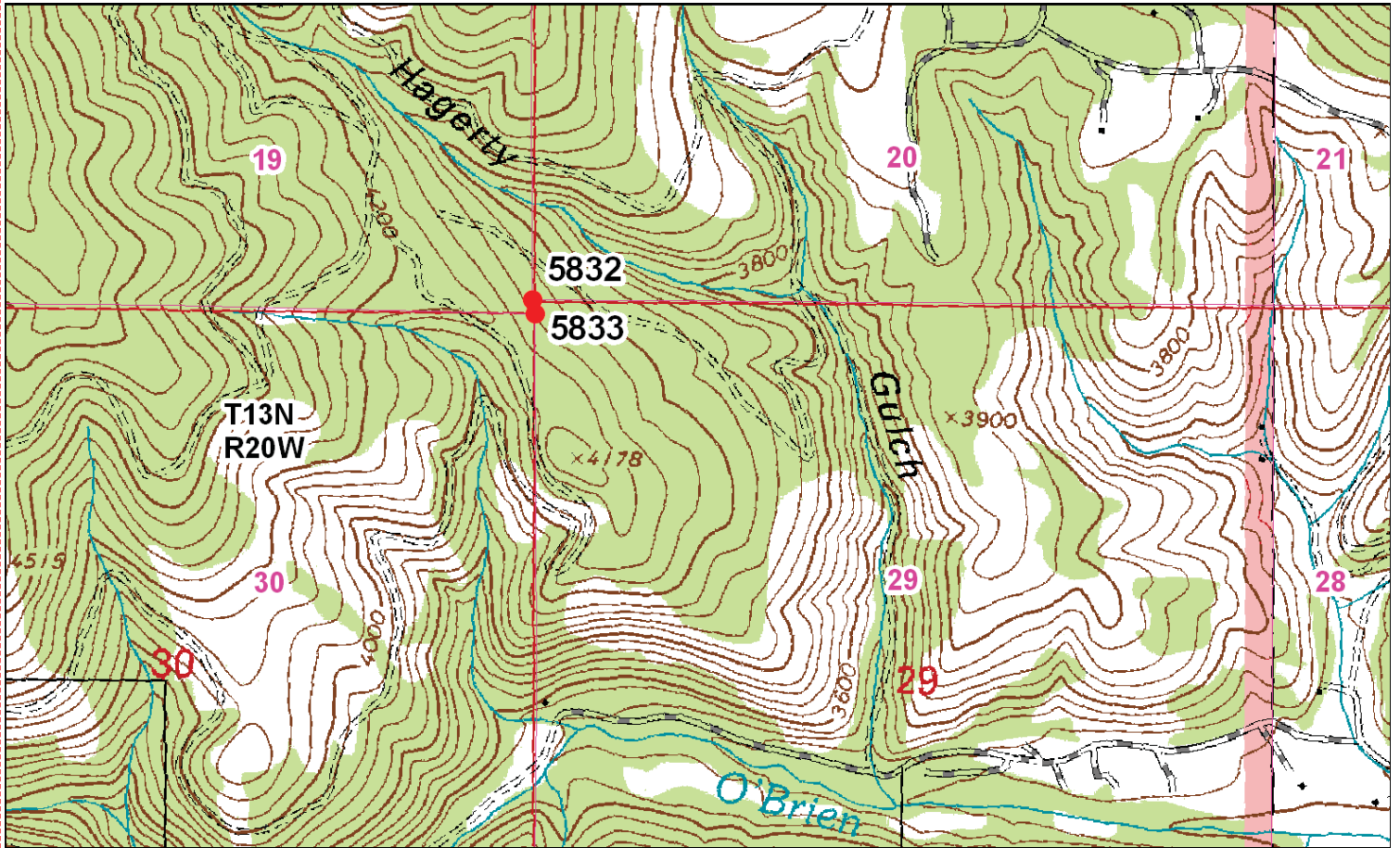


Photo Looking East



Point # 5833

**To Reach:** 2wd access, need key for gate at bottom of Hagerty Gulch.



Map of Area

**CERTIFIED LAND CORNER RECORDATION**

DESCRIPTION OF CORNER EVIDENCE FOUND, AND ORIGINAL RECORD (IF KNOWN)

At the Section corner common to Sections 19, 29 and 30 Township 13 North, Range 20 West, Missoula County, Montana.

RECORD: Set a shale stone 24"x12"x8", 18" in the ground for Cor. of Secs. 19 and 30 marked with 2 notches on S. and 5 notches on E. from which:  
 A Pine 24" bears N.79°N., 34.1 links  
 A Pine 18" bears S.42°N., 54.1 links

WE FIND: Both original BT stumps and original stone in place.

DESCRIPTION OF MONUMENT AND ACCESSORIES ESTABLISHED TO PERPETUATE THE ORIGINAL LOCATION OF THIS CORNER:

Date of work..... 5/1/74

WE ESTABLISH this corner by use of original evidence.

TO PERPETUATE this corner we set a 2"x30" Pine with 3" aluminum cap and buried original stone in bottom of hole and establish the following reference monuments:  
 A 12" Fir bears S.44°00'N., 41.30 feet  
 A 16" Fir bears N.60°00'N., 32.8 feet  
 (Both scribed "RPM")

Variance used E.20°

SKETCH, WITH COURSE AND DISTANCE TO ADJACENT CORNERS IF DETERMINED IN THIS SURVEY. (MAY SKETCH OR PASTE REPRODUCTION ON REVERSE SIDE).

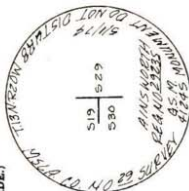
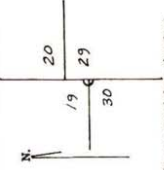


DIAGRAM OF CORNER:



I, GREGORY S. MORTENSEN, 4124S, certify that the information shown herein is true and correct.

*Gregory S. Mortensen*  
 Signature of Greafid Party Chief

I, RICHARD A. AINSWORTH certify that I have carefully performed or reviewed the work done on the diagrammed corner as reported on this recordation form and approve the same.

*Richard A. Ainsworth*  
 Signature of Surveyor

29235  
 Registration Number

395953

Office of Clerk and Recorder, County of Missoula at 8:19 A.M.  
 This "corner record" was filed for record on the 13 day of Aug 1974, was not on the cross-index plat and is assigned page No. 501

in book No. R.5, T.13N, R.20W  
 County of Missoula  
 ROBERT E. ARBES, County Clerk  
 by *Missy McLaughlin*

Corner Recordation Form or Other Supporting Document