

Missoula County Control Point Datasheet

Monument Description: 3" Aluminum Cap 3326S

Project Name: O'Brien

Station Description: 1/4 Corner

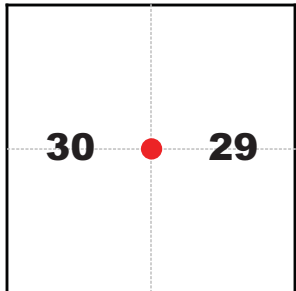
Date Visited: _____

Monument Stability: C GPS Visibility: C-

Observer: SEN

Quad. Name: Blue Mountain

T. 13 N. R. 20 W.



NAD 83 (2007) Lat/Long Position

46°51'20.169"N

114°09'56.580"W

NAVD 88 Elevation: 3691.0 sft.

Notes:

Photo of Monument

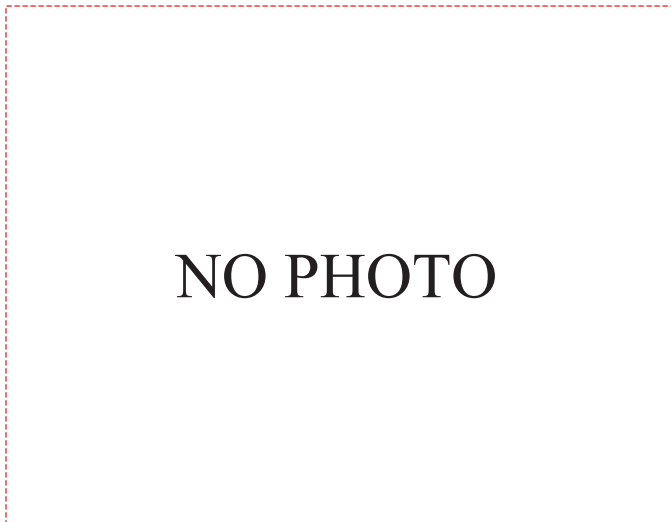
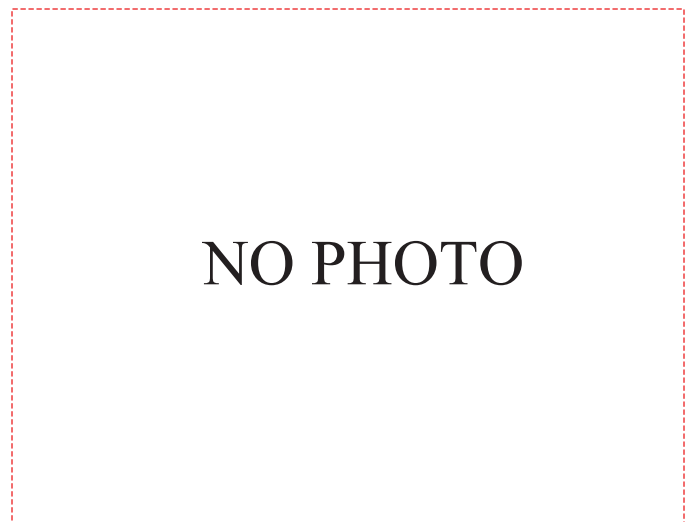
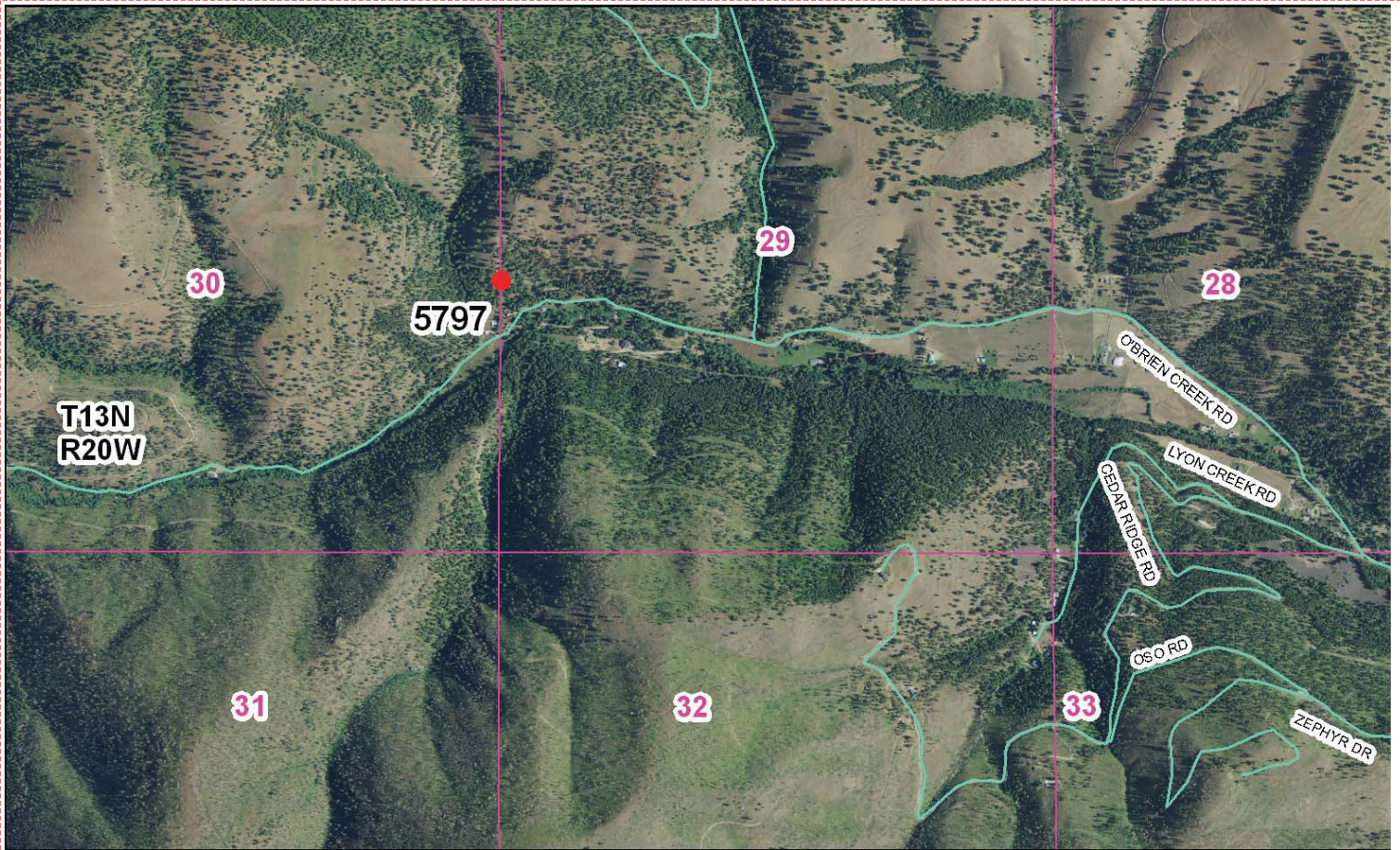


Photo Looking



To Reach: 2wd access.



Map of Area

CELESTIAL LAND CORNER RECORDATION

DESCRIPTION OF CORNER EVIDENCE FOUND, AND ORIGINAL RECORD (IF KNOWN)
 Original Record: Set a Sandstone 14x10x5 ins., 10 ins., in the ground, for 1/4 sec. cor. marked 1/4 on W. face
 From Which: A Pine 18 ins., diam. bears N.48°E., 37 lks. dist. marked 1/4 s 29 BT
 Resurvey Record: Survey by A.U. Stanley Registration No. 112 ES done March 1946. Field notes show Stone 14"x10"x5" found in place, & old bearing tree. Tree determined to be in error and referenced new bearing trees as follows:
 8" Fir bears N.41°45'E., 21.4 feet, scribed tree
 6" Fir bears N.84°05'W., 22.4 feet, scribed tree
 A Survey in May 1954 also shows Stone found in place by Mr. Stanley.

DESCRIPTION OF MONUMENT AND ACCESSORIES ESTABLISHED
 I Find: A 13" Fir N.84°05'W., at 21.9 feet and expose portion of the scribing:
 A 13" Fir N.42°E., at 20.3 feet and expose a portion of the scribing:
 (Distances to face of blaze)
 Trees across to condition and I do not set new bearing trees:
 A Pine Stump 5'40" W., at 37.9 feet scribed 1/4 s 30 BT
 Stump measures 13" diam. Field Notes are in error and do not pertain to this corner;
 It is my assumption Original Traces record distances:
 No evidence of Original Traces
 Line Trees leading directly to 1/4 Stone and use evidence and testimony of John Klapwyk that existing fence was placed along the line of original fence that had been in place since about 1905. Existing fence was installed about 5 years ago in same location as old fence 14x10x5 in. Stone lying face down in mound of rock, I set 3" alum. cap on a 2" O.D. x 30" galvanized pipe and place 1/4 Stone along side.

SKETCH WITH COURSE AND DISTANCE TO ADJACENT CORNERS IF DETERMINED IN THIS SURVEY.
 (MAY SKETCH OR PASTE REPRODUCTION ON REVERSE SIDE.)

Surveyor's Seal
 I, _____, certify that the information shown herein is true and correct.
 Signature of Ground Party Chief
 Donald L. Ebbutt
 I certify that I have carefully performed or reviewed the work done on the diagrammed corner as reported on this recordation form and approve the same.
 Signature of Surveyor

 Corner recorded on this sheet

DIAGRAM OF CORNER
 N. T13N R20W
 30 1/4 29
 366933
 3326-S
 Registration Number
 Office of Clerk and Recorder, County of Missoula
 This "corner record" was filed for record on the 31 day of July 1925, was noted on the cross-index plat and is assigned paper No. _____ in book No. _____
 50¢ Ca
 County Official
 RUGLETT E. ALLICK, County Clerk
 By [Signature]
 Cross Index No. T-5 R. 20 W. Mer.

Corner Recordation Form or Other Supporting Document

Point # 5797