

Missoula County Control Point Datasheet

Monument Description: 3-1/4" BLM Brass Cap

Project Name: ALL

Station Description: Closing Corner for Sections 3 and 4

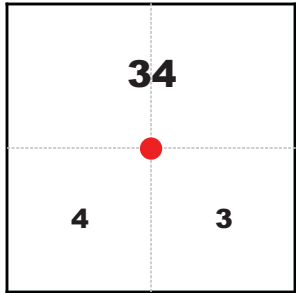
Date Visited: Jun 24, 2010

Monument Stability: C GPS Visibility: B

Observer: SEN - CLG

Quad. Name: Southwest Missoula

T. 12 N. R. 20 W.



NAD 83 (2007) Lat/Long Position

46°50'02.770"N

114°06'29.684"W

NAVD 88 Elevation: 3318.4 sft.

Notes:



Photo of Monument



Photo Looking North



Photo Looking East



Photo Looking South



To Reach: 2wd access off of Forest Service Road 365.



Map of Area

- INSTRUCTIONS**
1. Original and/or subsequent record used to evaluate the corner position.
 2. Description of monument and accessories set to perpetuate this corner position.
 3. Sketch of corner, show all pertinent data which can best be shown in a sketch example, corner marking, accessories, etc.
 4. Name of recorder, title, and address of recorder, if not registered in the State of Montana.
 5. Fill in Cross Index & Section Diagram at bottom of sheet.

CERTIFIED CORNER RECORDATION

Closing Corner of Sections 3 and 4
T. 12 N. R. 20 W. P.M., M. Missoula County, Montana

RECORD #1: (October 22, 1879) G. L. O. survey by James M. Page
"Set a granite stone 22 x 12 x 10 ins. 15 ins. in the ground for closing cor. to Secs. 3 + 4, marked C.C. with 3 notches on E. + W. edges from which:
A Pine 44 ins. diam. bears N 38° W, 200 lks. dist. marked T13N R20W S34 B.T.
No other trees within limits, and raised a mound of stone alongside."
RECORD #2: (1965) B. L. M. monumentation by Hugh Crawford and Roy G. Leedy
"The closing cor. of secs. 3 and 4, on the N. Boy, of the T.P., monumented with a granite stone, 24 x 12 x 8 ins., firmly set and marked CC on the N. face, 6 notches on the S. and 3 notches on the E. edges, and witnessed by the two bearing trees of unknown origin."

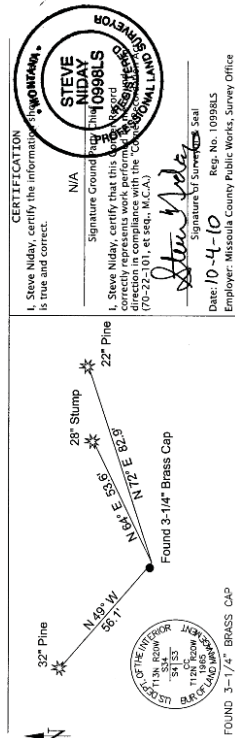
At the corner point
Set an iron post, 30 ins. long, 2 1/2 ins. diam., 24 ins. in the ground, with brass cap mkd. from which
The bearing trees of unknown origin:
A pine, 14 ins. diam., bears N 64 1/2° E., 81 lks. dist., mkd. with CC T12N R20W BT, visible.
A pine, 22 ins. diam., bears N. 49° W., 85 lks. dist., mkd. illegibly.

Bury the original stone alongside and raise a flat mound of stone, 3 ft. diam., around the iron post.
The cor. is situated 1 ch. N. of a gravel road bearing E. and W."

FOUND: (June 25, 2010) A 3-1/4" brass cap, marked as shown, 3 ins. out of the ground. From which:
A decayed stump, 28 ins. diam., bears N 64° E., 53.6 feet, no visible scribbling. (REC #2 N 64 1/2° E. 53.5 feet)
A Ponderosa Pine, 32 ins. diam., bears N 49° W, 56.1 feet.

SET: Left brass cap in place, established a new bearing tree.
A Ponderosa Pine, 22 ins. diam., bears N 72° E. 82.9 feet, scribbd RM.
Attached BT tags to both of the living bearing trees.

NAD 83 (2007) Lat. Lon. NAD 83 (2007) SPC Intl. Ft.
46°50'02.7701"N 975980.38 N
114°06'29.6842"W 816425.22 E
NAVD88 elevation 3318.3 sft Missoula Co. GPS #5827

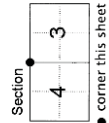


CERTIFICATION
I, Steve Niday, certify the information above is true and correct.

Signature of Recorder
STEVE NIDAY
10998LS
MISSOULA COUNTY CLERK & RECORDER

Date: 10-4-10
Reg. No. 10998LS
Employer: Missoula County Public Works, Survey Office

Office of Clerk and Recorder, County of Missoula, Recording Information.



201019171 B: 865 P: 1284 Pages: 1
10/04/2010 10:00:33 AM Corner Recordation
Steve Niday, Missoula County Clerk & Recorder

Cross Index No. A-13 T. 12 N., R. 20 W. P.M., M.

Corner Recordation Form or Other Supporting Document