

# Missoula County Control Point Datasheet

Monument Description: 3-1/4" BLM Brass Cap

Project Name: O'Brien

Station Description: Section Corner

Date Visited: Dec. 07, 2005

Monument Stability: C      GPS Visibility: C

Observer: SEN

Quad. Name: Blue Mountain

T. 13 N.

R. 21 W. R. 20 W.

25	30
36	31

NAD 83 (2007) Lat/Long Position

46°50'54.144"N

114°11'11.836"W

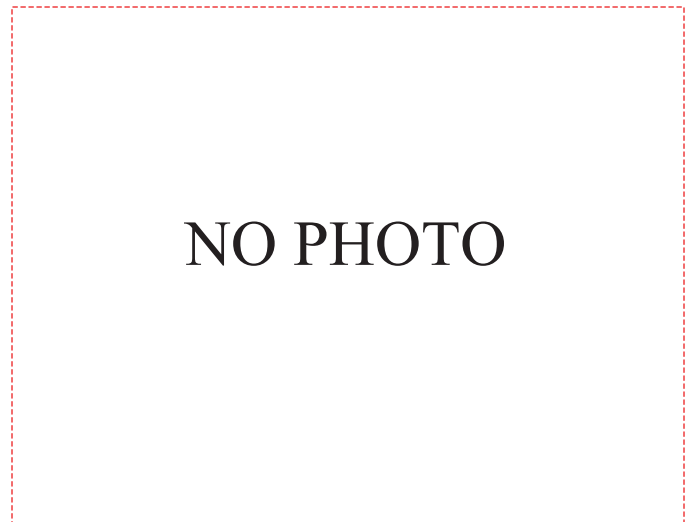
NAVD 88 Elevation: 3974.2 sft.

Notes:

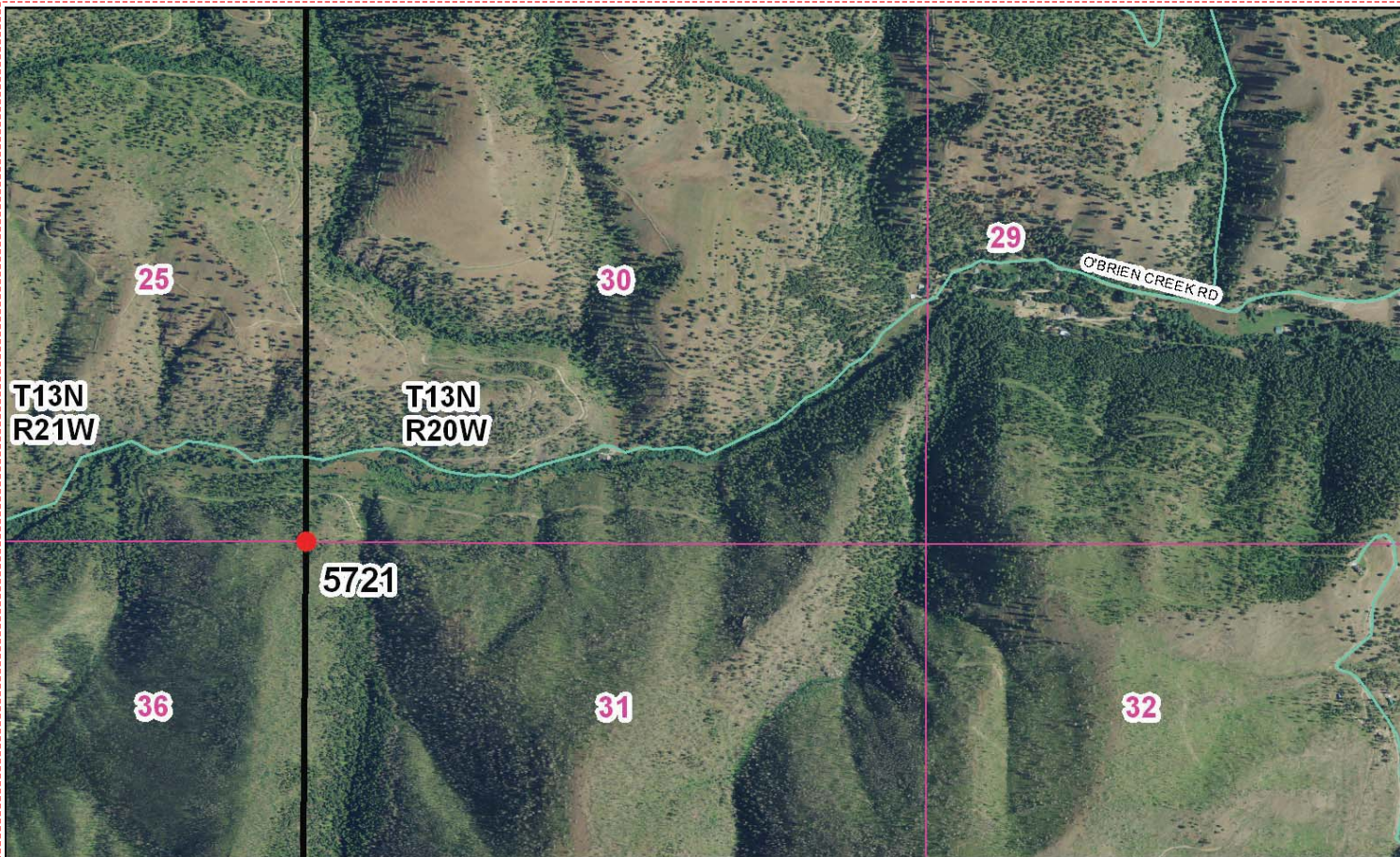
Photo of Monument



Photo Looking



**To Reach:** 2wd access to within 500 feet of the monument, need USFS key.



Map of Area

418-1478

**INSTRUCTIONS**  
 1. This form is to be completed and used to establish the corner position.  
 2. In the presence of witnesses, the corner shall be established by the recording of the monument and the recording of the monument data which can best be shown in a sketch example, corner marking, topography, position of accessories, etc.  
 3. The recording of the monument data shall be done in the presence of the County Clerk and the County Engineer.  
 4. The recording of the monument data shall be done in the presence of the County Clerk and the County Engineer.  
 5. The recording of the monument data shall be done in the presence of the County Clerk and the County Engineer.  
 6. The recording of the monument data shall be done in the presence of the County Clerk and the County Engineer.

**CERTIFIED CORNER RECORDATION**

Corner SECTION CORNER 30/31/36/25 T. 13 N., R. 20 W., P.M.M. MISSOULA County

**HISTORY:**

1901, GLO, not researched  
 1965, BLM, Found slate stone 13"x8"x5", with visible marks, and an "X" on the top from which:  
 rotten snag bears N.85°E., 11.9 feet marked illegibly.  
 12" larch bears S.20°W., 14.5 feet with scribing.  
 12" larch bears N.62-1/2°W., 17.4 feet marked illegibly.  
 Set 3-1/4" BLM brass cap with rock cairn from which:  
 12" fir bears N.20°E., 25.7 feet scribed per manual of instruction.  
 9" fir bears S.11°E., 13.2 feet scribed per manual of instruction.  
 13" fir bears S.44-3/4°W., 23.1 feet scribed per manual of instruction.  
 10" fir bears N.48°W., 21.1 feet scribed per manual of instruction.

**FOUND:**

I found a 3-1/4" BLM brass cap firmly set in a rock cairn with several bearing trees. The bearings and distances were not verified.

**PERPETUATION:**

No additional work was done at this corner. The corner falls 300-400' south of a new east-west logging road.  
 See a retracement Certificate of Survey performed for James Davis.

5721 6 11 1 56

**CERTIFICATION**  
 I, the undersigned, County Clerk and Recorder,  
 certify that the information herein is true and correct.  
 VICKIE M. ZEIER, County Clerk  
 Date: 7/18/99  
 Employer: Lewis & Clark Surveyors

**SKETCH OF CORNER**

Office of Clerk and Recorder, County of PHS/K. This "corner record" was filed for record on July 6, 1999 at 1:56 PM in book No. 418 on page 1478, in VICKIE M. ZEIER, County Clerk County Official. 9416254 Corner this sheet 418-1478

**Corner Recordation Form or Other Supporting Document**

Point # 5721