

Missoula County Control Point Datasheet

Monument Description: 3-1/4" Aluminum Cap 10998S

Project Name: ALL

Station Description: Section Corner

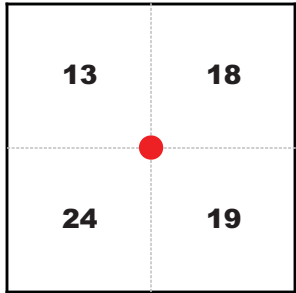
Date Visited: July 1, 2010

Monument Stability: C GPS Visibility: C

Observer: SEN

Quad. Name: Primrose

T. 13 N. R. 20 W.



NAD 83 (2007) Lat/Long Position

46°52'38.139"N

114°11'12.261"W

NAVD 88 Elevation: 4630.2 sft.

Notes:

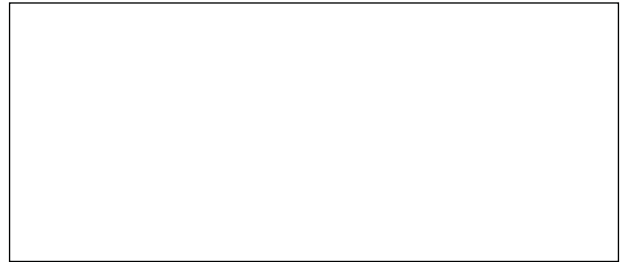


Photo of Monument



Photo Looking North

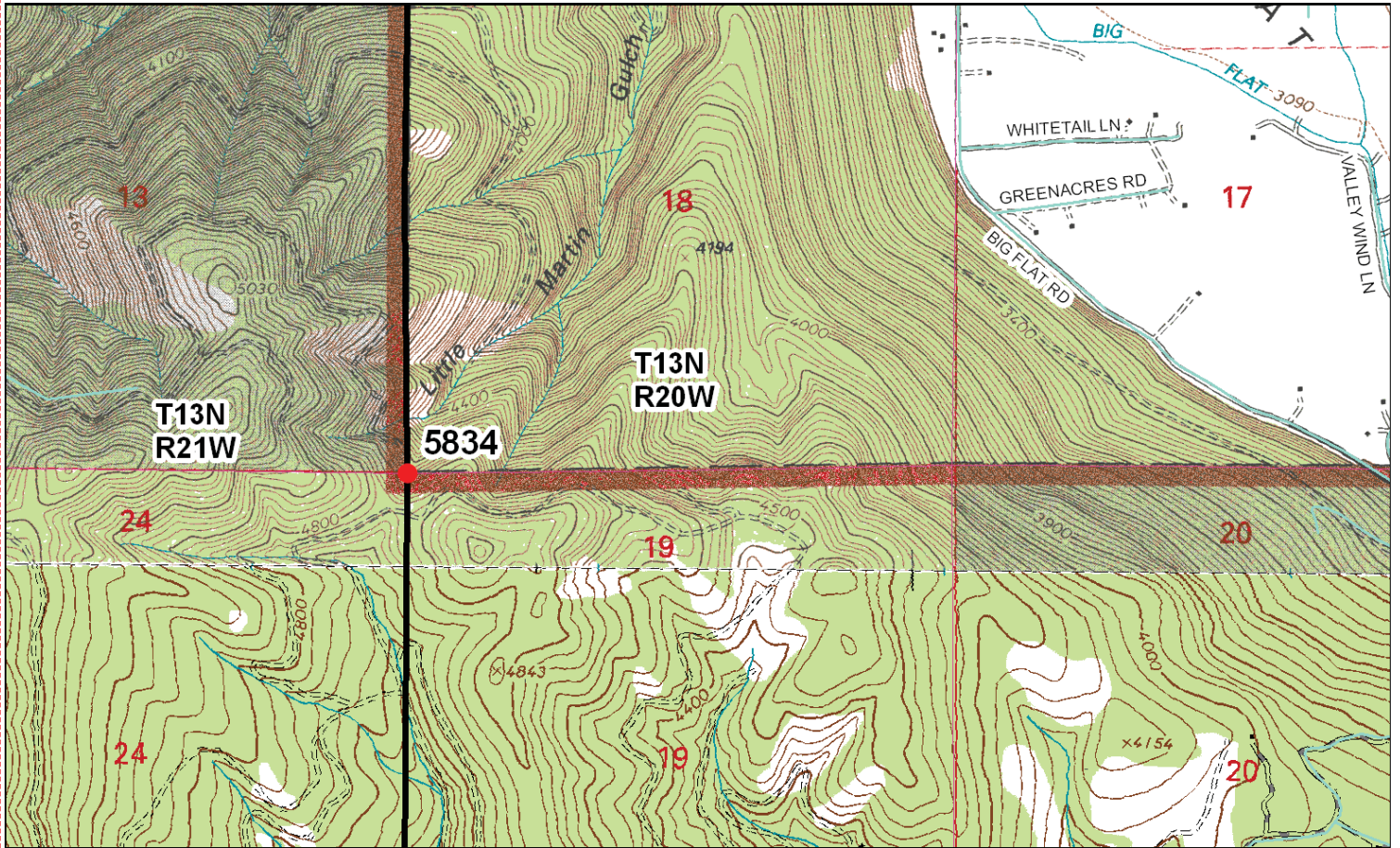


Photo Looking East



Point # 5834

To Reach: 2wd, 150' walk from road. Access is premised by Duane Lange (406-475-3742), property off of Sherman Gulch Road. Daughter Nancy Lange is local (370-1278), unlocked cable gate.



Map of Area

- INSTRUCTIONS**
1. Original and/or subsequent record used to establish the corner position.
 2. Description of monument and accessories set to perpetuate the corner position.
 3. Diagram of monument and accessories set to perpetuate the corner position.
 4. Diagram of corner, show all pertinent data which can best be shown in a sketch example, corner marking, accessories, etc.
 5. Diagram of monument and accessories set to perpetuate the corner position.
 6. Fill in Cross Index & Section Diagram at bottom of sheet.

CERTIFIED CORNER RECORDATION

Corner Common to Sections 18, 19, 13 and 24
T. 13 N. R. 20 W., and T. 13 N. R. 21 W. P.M., M. Missoula County, Montana

RECORD #1: (October 28, 1879) G. L. O. survey by James M. Page
"Set a post 4 ft. long, 4 ins. square, 24 ins. in the ground, for cor. to Secs. 18, 19, 13 + 24 marked T 13 N. S 18 on NE, R 20 W S 19, on SE, S 24 on SW and R 21 W. S 13 on NW. faces with 3 notches on N + S edges from which
A Tamarack 8 ins. diam bears S 51° 1/2' W, 16 lks. dist. marked T 13 N. R 21 W. S 13 B.T.
A Tamarack 6 ins. diam bears S 56° W, 8 lks. dist. marked T 13 N. R 21 W. S 24 B.T.
A Tamarack 4 ins. diam. bears S 22° 1/4' E, 5 lks. dist. marked T. 13 N. R 20 W. S 19 B.T.
A Tamarack 5 ins. diam. bears N 59° E, 4 lks. dist. marked T 13 N. R 20 W. S 18 B.T."

RECORD #2: (August 5, 1907) G. L. O. retracement by William W. McElroy and John P. Henselwood
"The cor. of secs. 13, 18, 19 and 24. Found a post 4 ins. sq; 2 ft. above ground; firmly set, and marked and witnessed as described by the surveyor general."

FOUND: (July 1, 2010) A 2 ins. square top post, 2-1/2 ft. long, no visible scribing. The post was leaning, but the base was still intact. I removed the post and found rotted remains of the lower portion of the post in the hole. From which:
A Larch, 15 ins. diam., bears East, 13.5 ft., with a small healed over scar 1 ft. from the base of the tree, facing the corner. (No record mentioning this tree has been found)
A standing dead Larch, 8 ins. diam., bears S 56° W, 5.3 ft., with healed over face.
A Larch, 16 ins. diam., bears N 51° W, 10.6 ft., with healed over face.

SET: A 3-1/4" aluminum cap with magnet, marked as shown, on a 1" x 30" drivable shaft, at the position of the base of the found post. From which:
A Larch, 9 ins. diam., bears N 10° E, 10.2 ft., scribed RM.

NAD 83 (2007) Lat. Lon. NAD 83 (2007) SPC Intl. Ft.
46°52'38.1387" N 992847.83 N
114°11'12.2613" W 787765.48 E
Missoula Co. GPS #5834
NAVD88 elevation 4830.2 ft

CERTIFICATION
I, Steve Niday, certify the information is true and correct.

Signature Ground Point Chain
STEVE NIDAY
MISSOURIA COUNTY SURVEYOR
CORNER RECORDATION

Date: 10-5-10 Recp. No. 109885
Employer: Missoula County Public Works, Survey Office

Section
13 18
24 19

201019174 B: 867 P: 167
10/05/2010 10:56:05 AM Corner Recordation
Visible File # 24447 - MISSOURIA COUNTY REGISTER

Office of Clerk and Recorder, County of Missoula, Recording Information.

2010 MISSOURIA COUNTY SURVEYOR

SET: 3-1/4" AL CAP

8" Dead Latch

16" Larch

10.2' N 10° E

10.6' S 51° W

13.5' East

15" Larch

8" Dead Latch

Corner Recordation Form or Other Supporting Document