

# Missoula County Control Point Datasheet

Monument Description: 3-1/4" Aluminum Cap 9330LS

Project Name: Ninemile Prairie

Station Description: Section Corner

Date Visited: Aug. 24, 2010

Monument Stability: C      GPS Visibility: C

Observer: SEN - CLG

Quad. Name: Greenough

T. 14 N.

R. 15 W. R. 14 W.

12	7
13	18

### NAD 83 (2007) Lat/Long Position

46°58'31.133"N

113°25'46.724"W

NAVD 88 Elevation: 3993.3 sft

Notes:

Photo of Monument



Photo Looking North

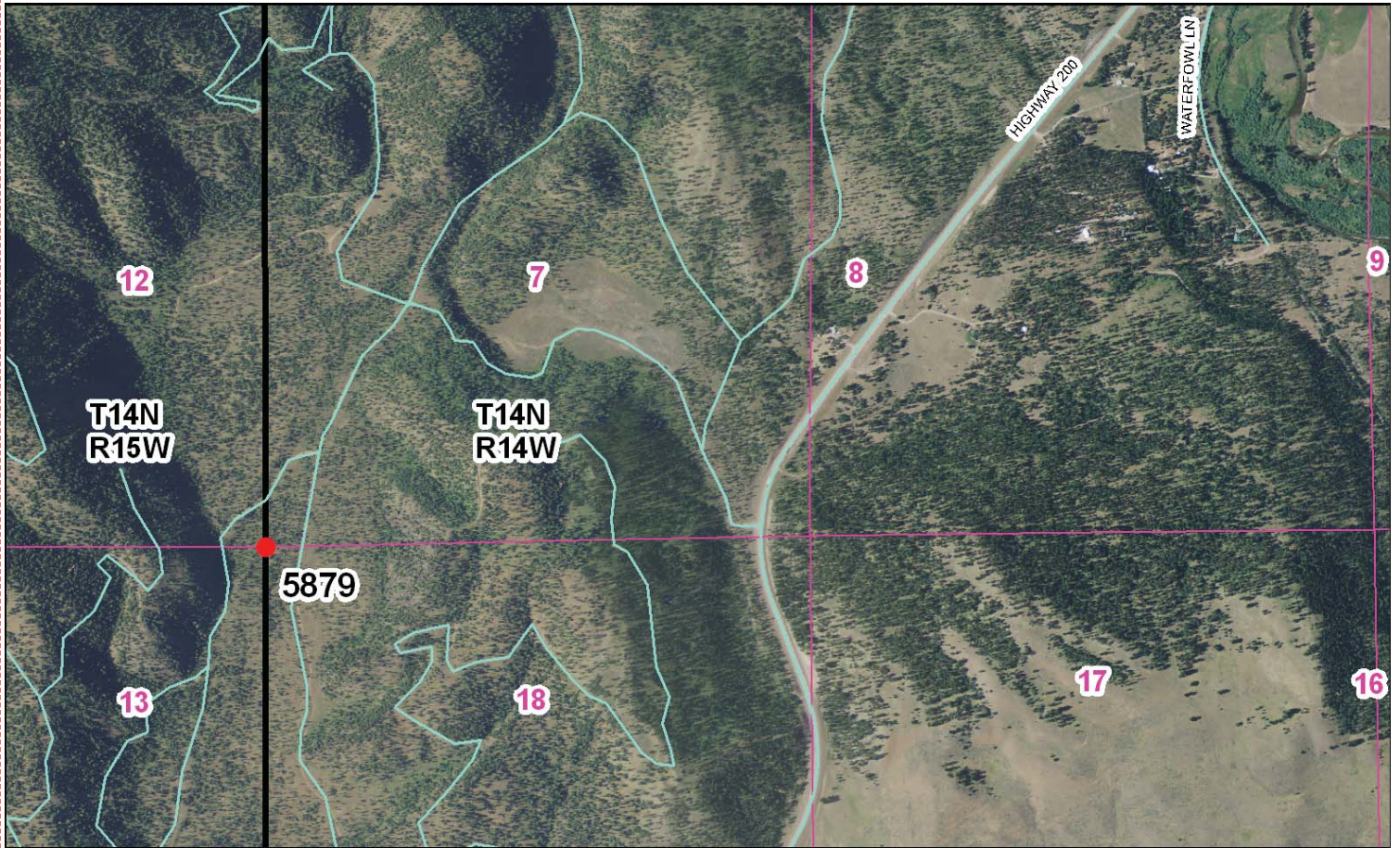


Photo Looking West





**To Reach:** 2wd access with Plum Creek key, from Woodchuck Canyon.



Map of Area

Q:CO-STD/152

**INSTRUCTIONS**

1. Original and/or subsequent record used to evaluate the corner position.
2. Description of monument and accessories set to perpetuate the corner position.
3. Description of monument and accessories set to perpetuate the corner position.
4. Sketch of corner, show all pertinent data which can best be shown in a sketch example, corner marking, topography ties, position of accessories.
5. Certification must be signed and sealed by a Land Surveyor registered in the State of Montana.
6. Fill in Cross Index & Section Diagram at bottom of sheet.

**CERTIFIED CORNER RECORDATION**

Corner SECTION CORNER 7, 12, 13, 18 T. 14 N. R. 14 W., 15W. P.M.M. MISSOULA County

**GLO RECORD:**  
 Set a 14 ins. X 10 ins. X 6 ins. porphyry stone 9 ins. in the ground marked with 2 notches on the north and 4 notches on the south edges, from which:  
 A 15 ins. pine bears N52°55'E a distance of 68 links.  
 A 16 ins. pine bears S46°50'E a distance of 98 links.  
 A 9 ins. pine bears S63°40'W a distance of 34 links.  
 A 10 ins. pine bears N55°20'W a distance of 12 links.

**FOUND:**  
 Found a 15 ins. X 11 ins. X 9 ins. porphyry stone firmly set 9 ins. in the ground (with no visible marks) in center of loose mound of stone, from which:  
 A 22 ins. pine bears N55°W a distance of 9.2 feet (8.5 feet to face), with partial markings visible.  
 A 24 ins. pine snag bears S44°E a distance of 65.2 feet (64.0 feet to face), with scribbles visible on the open face.  
 A 24 ins. pine bears S60°W a distance of 23.1 feet (22.6 feet to face), with healed scar and no visible scribe. Affixed to the tree is a 1957 Anaconda Co. location posted stump bears N55°E a distance of 45.6 feet, with "BT" visible on displaced portion.  
 It appears GLO distances may have been measured to the face of the blaze.

**SET:**  
 At position of found stone I set a 5.8" x 2.4" iron rebar affixed with a 3 1/4" Montana Northwest Company aluminum cap, 6 ins. above the ground in small mound of stone, stamped as shown below. Original stone was buried in mound around monument.

**FROM WHICH:** A 8 ins. fir bears N65°E a distance of 49.6 feet, scribed "RM 1" on a low blaze. Affix BT tag and red paint on tree.

A 8 ins. fir bears N37°W a distance of 24.5 feet, scribed "RM 2" on a low blaze. Affix BT tag and red paint on tree.

SEE CERTIFICATE OF SURVEY NO. 5331

**CERTIFICATION**

I, \_\_\_\_\_, certify the information shown herein is true and correct.

Signature Ground Party Chief  
 I, Ken E Jenkins, certify that this Corner Record correctly identifies the location of this corner for my direction in compliance with the "Corner Recordage Act", (70-2-101, et seq., M.C.A.)

Signature of Surveyor & Seal  
[Signature]  
 Date: 9/2002, Reg. No. 9336 LS  
 Employer: Montana Northwest Company

**SKETCH OF CORNER**

Office of Clerk and Recorder, County of \_\_\_\_\_, This "corner record" was filed for record on \_\_\_\_\_, 2002. This record was noted on the cross-index book No. 20029355 Page: 1 of 1  
 MISSOULA COUNTY VECTORS & ZONING DIVISION  
 BK-080 Pg-249

Cross Index No. J.L. T. 14N. R. 14W. P.M.M. • Corner this sheet

**Corner Recordation Form or Other Supporting Document**

Point # 5879