

# Missoula County Control Point Datasheet

Monument Description: Stone w/ "x" chiseled on top

Project Name: Ninemile Prairie

Station Description: Section Corner

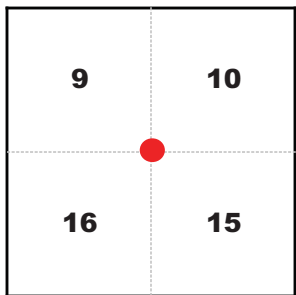
Date Visited: Aug. 25, 2010

Monument Stability: D      GPS Visibility: B

Observer: SEN - CLG

Quad. Name: Greenough

T. 14 N. R. 15 W.



NAD 83 (2007) Lat/Long Position

46°58'31.276"N

113°29'37.988"W

NAVD 88 Elevation: 4328.0 sft

Notes:

Photo of Monument



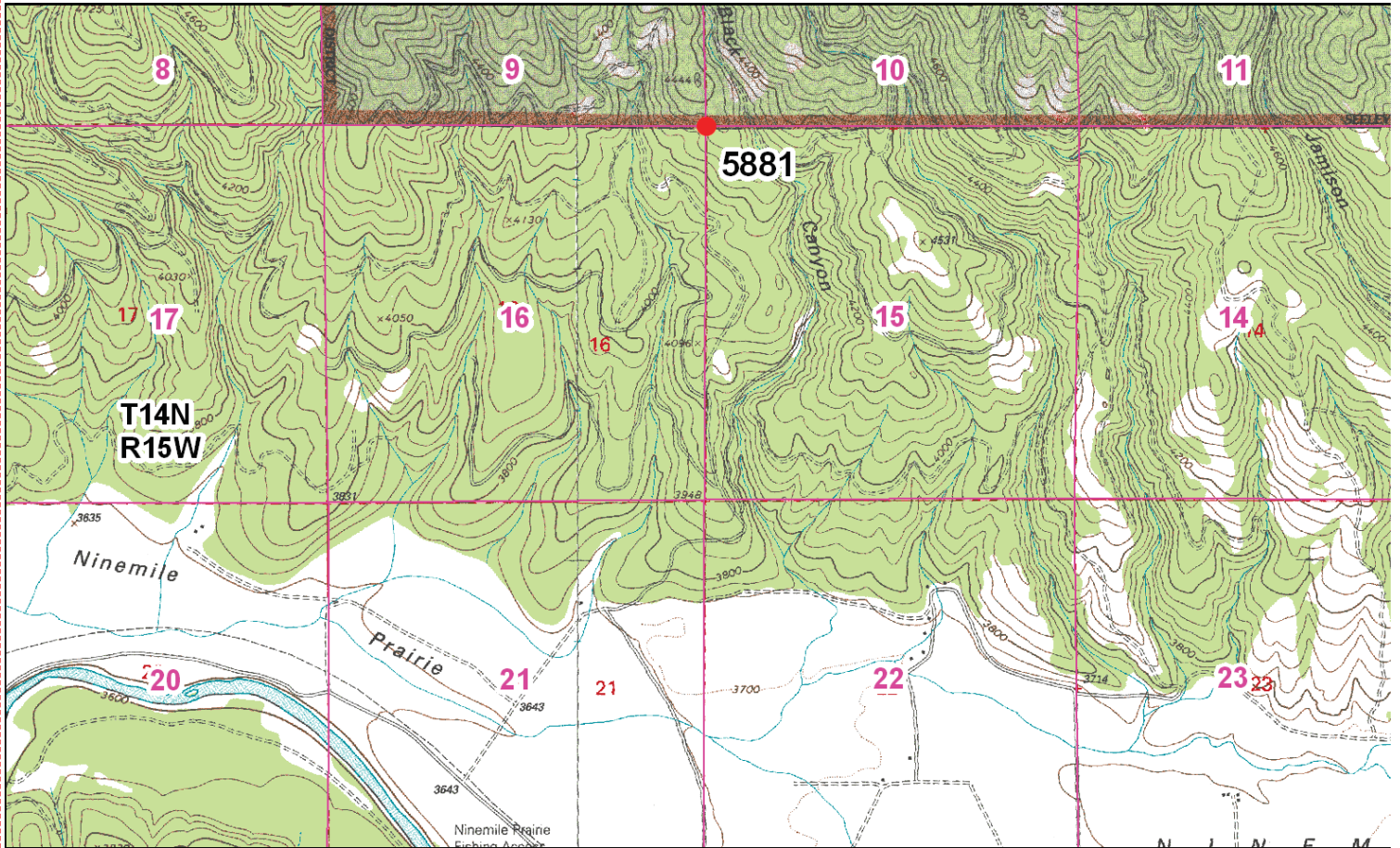
Photo Looking East



Photo Looking South



**To Reach:** 2wd access to within 100 feet of monument, need Plum Creek key and Paws Up Resort combination.



Map of Area

NO CORNER RECORDATION FORM

Corner Recordation Form or Other Supporting Document

Point # 5881