

Missoula County Control Point Datasheet

Monument Description: 3-1/4" Aluminum Cap 10998S

Project Name: Ninemile Prairie

Station Description: Section Corner

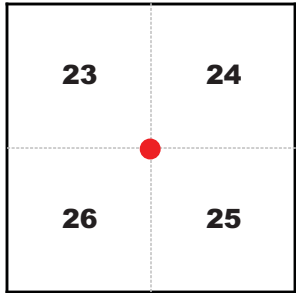
Date Visited: Sep 19, 2009

Monument Stability: C+ GPS Visibility: A

Observer: SEN - CLG

Quad. Name: Greenough

T. 14 N. R. 15 W.



NAD 83 (2007) Lat/Long Position

46°56'45.596"N

113°27'03.709"W

NAVD 88 Elevation: 3756.9 sft.

Notes:

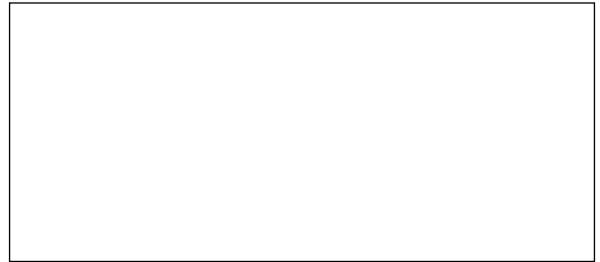


Photo of Monument



Photo Looking North



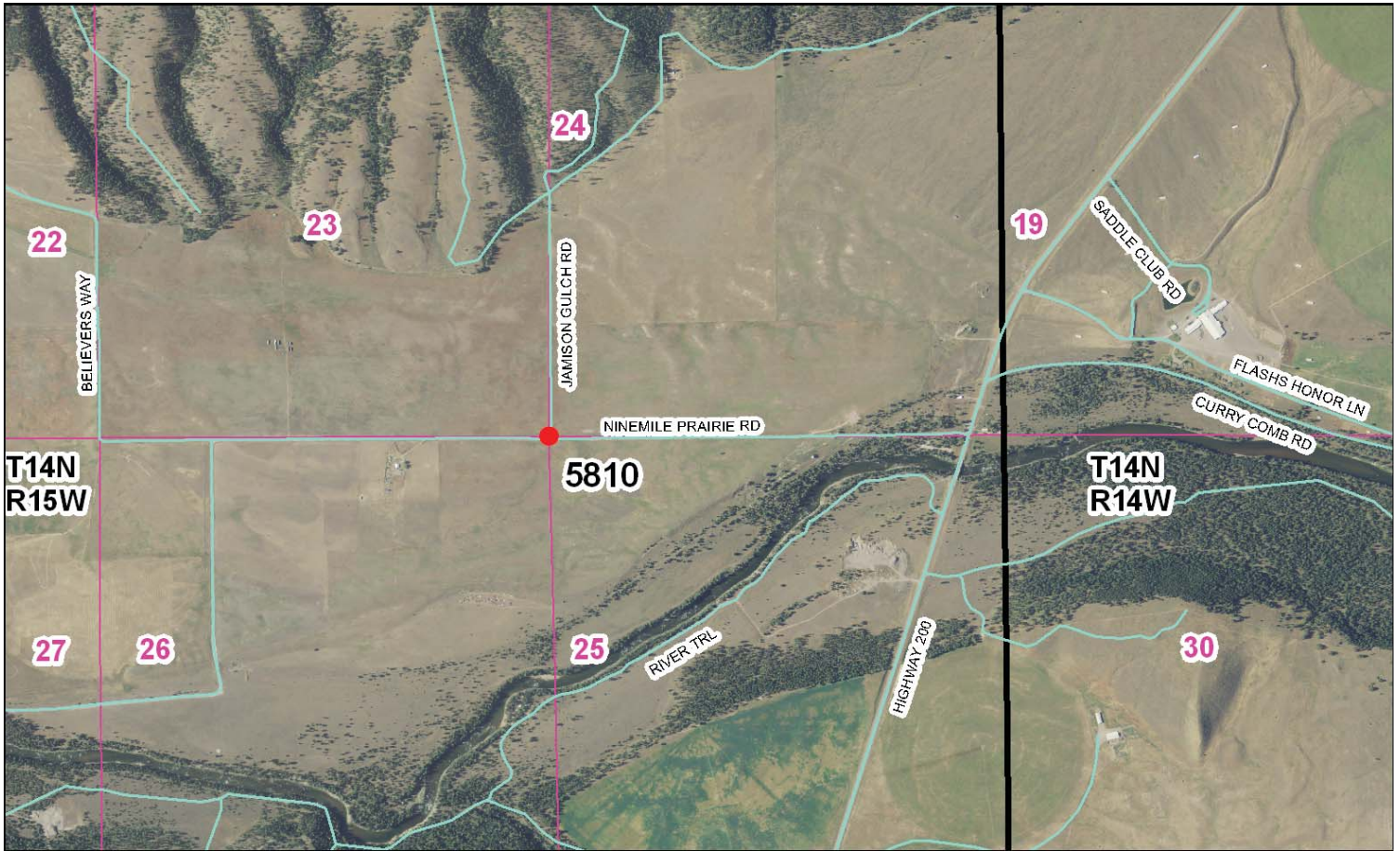
Photo Looking East



Photo Looking West



To Reach: 2wd access.



Map of Area

- INSTRUCTIONS**
1. Check meter, subsequent record used to evaluate the corner position.
 2. Description of method of establishing lot or obliterated corners.
 3. Description of monument and accessories set to perpetuate the corner position.
 4. Description of monument and accessories set to perpetuate the corner position.
 5. Description of monument and accessories set to perpetuate the corner position.
 6. Fill in Cross Index & Section Diagram at bottom of sheet.

CERTIFIED CORNER RECORDATION

Corner Common to Sections 23, 24, 25 and 26
T. 14 N. R. 15 W. P.M., Missoula County, Montana

RECORD #1: (December 11, 1884) G. L. O. survey by Henry B. Davis
"Set a granite stone 16 x 10 x 3 ins. 11 ins. in the ground for cor to secs. 23, 24, 25 + 26 marked 2 notches on S. and 1 on E. edges. dug pits 18, 18, 12 ins. in each sec 5 1-2 ft. dist. and raised a mound of earth 2 ft. high, 4 1/2 ft. base alongside."

RECORD #2: (July, 1982) Corner Recordation Form #8208995, by Robert W. Steele
"I set a 2" x 30" galvanized iron pipe atop of which is a 3 inch aluminum cap marked as shown below. The monument is set so that the top of the cap is a foot below the surface of a road."

The corner was located in the north - south direction by being on line east and west between the northwest corner of Section 25 and the northeast corner of Section 25, both of which have been found and were recently monumented.
It was located in the east - west direction by being placed in the middle of a road going north each half of which belongs to different owners in sections 23 and 24.
A power pole bears N. 26°00' E. a distance of 36.30 feet.
A power pole bears S. 08°00' E. a distance of 62.20 feet."

FOUND: (August 19, 2010) A 3" aluminum cap, with the center busted out, approximately 20 feet north of the intersection of Ninemile Prairie Road and Jamison Gulch Road. This corner was determined to be set in error, a survey of adjacent monuments indicates that Steele used the position of a reference monument instead of the corner position, for the northwest corner of section 26.

SET: A 3-1/4" aluminum cap with magnet, marked as shown, on a 1" x 30" drivable aluminum shaft, 0.9' below the gravel road surface. This corner is located near the centerline intersection of Ninemile Prairie Road and Jamison Gulch Road. From which:

- A Power Pole bears N 12° E, 58.5 feet.
- A Power Pole bears S 23° E, 39.6 feet.
- A 5/8" x 24" rebar with a 2-1/2" aluminum cap, marked as shown, bears N 45° W, 28.32 feet.

I established the north - south position of this corner using the 1884 GLO record between the NW corner of section 24 and the 1/4 corner common to sections 25 and 26. The east - west position was established using the center of the north - south road, (Jamison Gulch Road), and a 20 foot offset from the existing north - south fence.

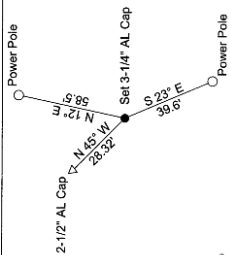
See reverse side of form for measurements.

NAD 83 (2007) Lat. Lon. NAD 83 (2007) SPC Intl. Ft.
46°56'45.5964" N 1007737.15 N
113°27'03.7088" W 982637.10 E
Missoula Co. GFS #5810
NAVD88 elevation 3756.9 ft

CERTIFICATION
I, Steve Niday, certify the information shown on this map is true and correct.

Signature of Surveyor
Steve Niday
Steve Niday
10998LS
Professional Land Surveyor
Missoula, MT

Date: 10-4-10
Reg. No. 10098LS
Employer: Missoula County Public Works, Survey Office



Section
23-24
26-25

Office of Clerk and Recorder, County of Missoula, Recording Information.

201019166 B: 866 P: 1299
10/04/2010 10:27:22 AM Corner Recordation
Steve Niday, Missoula County Clerk & Recorder

• corner this sheet
Cross Index No. R-21 T. 14 N., R. 15 W. P.M., M.

Corner Recordation Form or Other Supporting Document

Point # 5810