

Missoula County Control Point Datasheet

Monument Description: 3-1/4" Aluminum Cap 10998S

Project Name: Ninemile Prairie

Station Description: 1/4 Corner

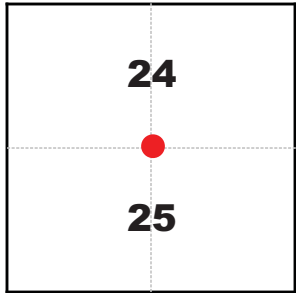
Date Visited: Aug 20, 2010

Monument Stability: C+ GPS Visibility: A+

Observer: SEN - CLG

Quad. Name: Greenough

T. 14 N. R. 15 W.



NAD 83 (2007) Lat/Long Position

46°56'45.830"N

113°26'25.024"W

NAVD 88 Elevation: 3770.2 sft.

Notes:

Photo of Monument



Photo Looking East

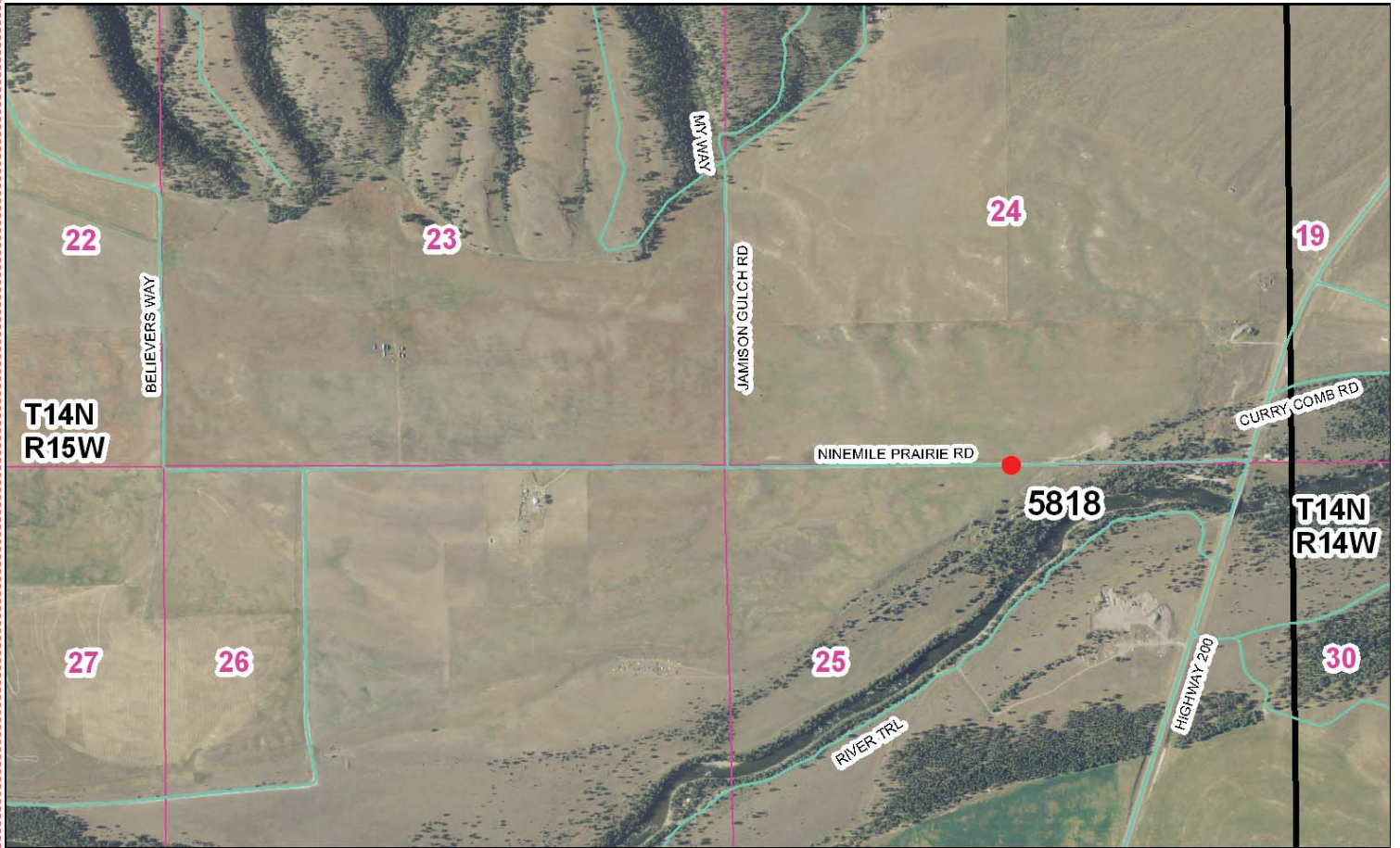


Photo Looking West



Point # 5818

To Reach: 2wd access.



Map of Area

- INSTRUCTIONS**
- Original and/or subsequent record used to evaluate the corner position.
 - Description of monument and accessories set to perpetuate the corner position.
 - Description of monument and accessories set to perpetuate the corner position.
 - Sketch of corner, show all pertinent data which can best be shown in a sketch example, corner marking, accessories, etc.
 - Reference to any previous record registered in the State of Montana.
 - Fill in Cross Index & Section Diagram at bottom of sheet.

CERTIFIED CORNER RECORDATION

1/4 Corner Common to Sections 24 and 25
T. 14 N. R. 15 W. P.M., M. Missoula County, Montana

RECORD #1: (December 11, 1884) G. L. O. survey by Henry B. Davis
"Set a granite stone 10 x 10 x 6 ins. in the ground for 1/4 sec. cor., marked 1/4 on N. face, dug pits 18, 12 ins. E + W. of stone 5 1/2 ft. dist. and raised a mound of earth 1 1/2 ft. high, 3 1/2 ft. base alongside."

RECORD #2: (January 29, 2004) Corner Recordation Form #200402488, by Ken E. Jenkins
"Found no trace of original stone or its accessories, due to road construction following the 1884 GLO record."

Using single proportionate measurement between the corner of sections 23, 24, 25, and 26; T.14N., R.15W., and the corner of sections 24 and 25; T.14N., R.15W., and sections 19 and 30; T.14N., R.14W., we set a 5/8" x 24" rebar with 3 1/4 in. aluminum cap 6 ins. below the ground. Cap was stamped as recorded below, from which:

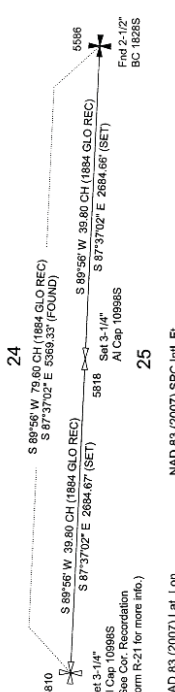
A 5/8 in. fence post bears N46°17' W, 17.7 ft.
A power pole (MC_14-15, 254601) bears S88°W, 131.5 ft."

FOUND: (August 20, 2010) A 3-1/4" aluminum cap, just north of the north edge of Ninemile Prairie Road. An extensive survey of PLUS corners in the area proved that the NW corner of section 25 had been improperly set by Robert Steele. Since the proportioning of this corner relied on that erroneous monument of Steele's, it was determined that this monument had also been improperly set.

SET: A 3-1/4" aluminum cap with magnet, marked as shown below, on a 1" by 30" drivable aluminum shaft, 1.1 feet below the road surface. This corner falls 4 feet north of the centerline of Ninemile Prairie Road. From which:

A 2-1/2" aluminum cap, marked as shown, on a 5/8" x 24" rebar, bears N 46° E, 39.19 feet.
A 3-1/4" aluminum cap, marked 5330LS, bears N 11°46'32" W, 11.68 feet.

I established the position of this corner by single proportionate measurement between the section corners to the east and west.



NAD 83 (2007) Lat. Lon. 46°56'45.82927N 113°26'25.02377W
MISSOULA CO. GPS #5818
MISSOULA CO. GPS #5818
MISSOULA CO. GPS #5818
MISSOULA CO. GPS #5818

Positional information determined by RTK GPS observations using GEOID 2009 for elevation.
CERTIFICATION
I, Steve Niday, certify the information shown on this map is true and correct.



Signature of Steve Niday
I, Steve Niday, certify that the information shown on this map correctly represents work performed by me or under my direct supervision in compliance with the provisions of the Montana Professional Land Surveyor Act, 82-221, 82-244, and 82-245.
Date: 10-4-10 Reg. No. 10998LS
Employer: Missoula County Public Works, Survey Office

Section 24 25
Office of Clerk and Recorder, County of Missoula, Recording Information.
SET 3-1/4" AL CAP

201019165
Missoula County, Montana
B: 866 P. 1258
Pases: 1
Corner Recordation
Form R-21 for more info.

Cross Index No. R-23 T. 14 N., R. 15 W. P.M., M. corner this sheet