

CERTIFIED CORNER RECORDATION

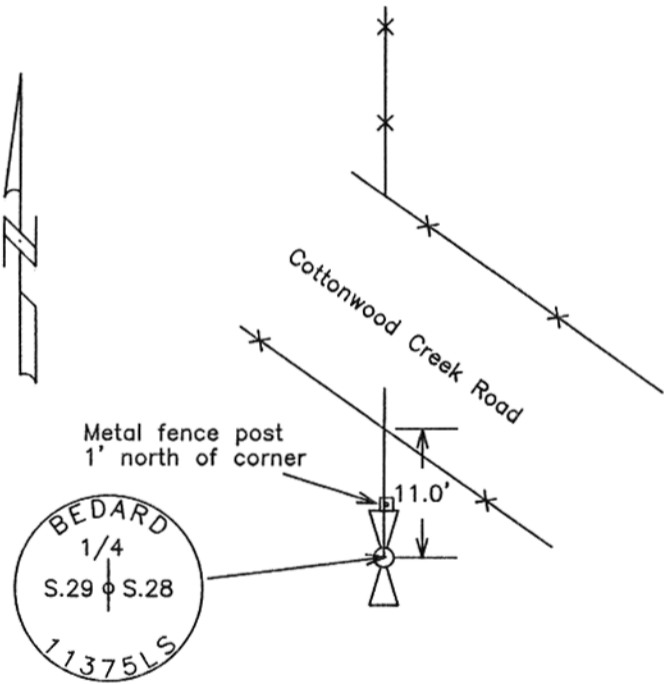
Corner: East 1/4 corner, Section 29 T. 14N R. 18E P.M.M. Fergus County

Original Record: (1886) 40.00 ch. Set a sand stone 12x10x10 ins. 8 ins. in the ground, for 1/4 sec. cor. marked 1/4 on W. face, and raised a mound of stone alongside.

Subsequent Record: N/A

Evidence Found: No evidence of original corner.

Perpetuation: I set a 2" alum. cap at the single proportion position of the 1/4 corner. I set a 4' metal post 1' north of corner. A fence line for the south right-of-way of Cottonwood Creek Road bears north 11.0'. A fence line north of Cottonwood Creek Road is on line with the proportionate position for the corner. The call to the center of the original position of the road at the time of the 1886 survey fits the proportionate position.



See opposite side this sheet for section breakdown



CERTIFICATION

I, Donald E. Bedard
 certify the information shown is true and correct.
Donald E. Bedard
 Signature Ground Party Chief

I, Donald E. Bedard
 certify that this Corner Record correctly represents work performed by me or under my direction in compliance with the "Corner Recordation Act" (70-22-101, et seq., M.C.A.)
Donald E. Bedard
 Signature of Surveyor & Seal

Date: Jan 9, 2002 Reg. No. 11,375 LS

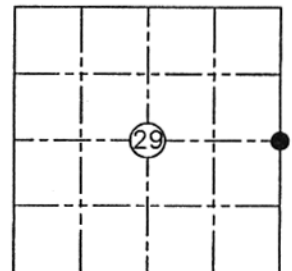
Employer: Beartooth Land Surveying

SP-19 SKETCH OF CORNER

Sec. 29

Office of Clerk and Recorder, County of FERGUS. This "corner record" was filed for record on JAN 10 2002 was noted on the cross-index plat and assigned page No. 112 in book No. 6

Kathy A. Edwards *Jessan M. Wintz*
 County Official



63516

Cross Index No. T-9 T. 14N R. 18E P.M.M.

● Corner this sheet