

**INSTRUCTIONS**

1. Original and/or subsequent record used to evaluate the corner position.
2. Description of evidence found, note discrepancies in the record, state method of establishing lost or obliterated corners.
3. Description of monument and accessories set to perpetuate the corner position.
4. Sketch of corner, show all pertinent data which can best be shown in a sketch example, corner marking, topography ties, position of accessories, etc.
5. Certification must be signed and sealed by Land Surveyor registered in the State of Montana.
6. Fill in Cross Index & Section Diagram at bottom of sheet.

**CERTIFIED CORNER RECORDATION**

Corner E 1/4 Sec. 13 T. 14 N R. 18 E P.M.M. FERGUS County

1. Original Record by George M. Stafford, 1886 and Subsequent Record for W 1/4 Cor. Sec. 18): A point about 50 ft. above the creek and set a sandstone 15x15x3 ins., 10 ins. in the ground for 1/4 sec. cor. marked 1/4 on W. face and raised a mound of stone alongside. From this point the old 1/4 sec. cor. a sandstone 16x8x4 ins. firmly set in the ground, marked 1/4 on W. face with pits and mound of earth alongside. Bears North 3.30 Chns (217.8ft.)
2. Found a split sandstone 11x4x5 ins. high and 9x2x5 ins. both pieces leaning NE. No visible marks on either stone. Stone position is 17 ft. S. of rec. position from the fnd. W 1/4 Cor. of Sec. 18. An ancient fence runs S. & E. Accepted this position due to long time acceptance locally.
3. Set a 5/8"x30" rebar 0.6" above the ground on the west side of the stone as if upright and 2" aluminum cap marked

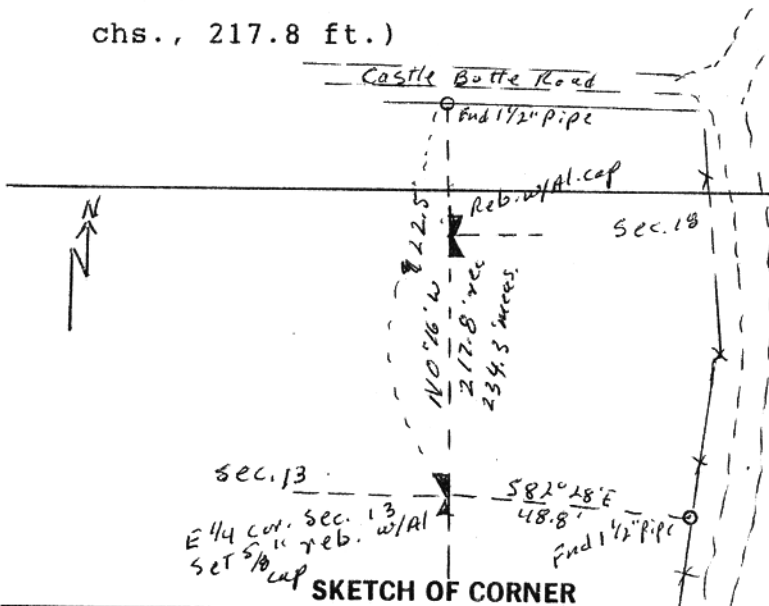
T14N R18E  
1/4  
S 13  
1993

a 4 ft. steel post is 0.5 ft. west.

A 1 1/2" pipe bears S. 82°28'E. at 48.8 ft. on W. R/W of county road.

A 1 1/2" iron pipe bears N 0°16'E 922.5 ft. on S. R/W of county road

The W 1/4 cor. of Sec. 18 bears N. 0°16' W., 234.3 ft. (rec. N. 3.30 chs., 217.8 ft.)



CERTIFICATION

I, \_\_\_\_\_  
 certify the information shown herein is true and correct.

Signature Ground Party Chief

I, STEWART NASH  
 certify that this Corner Record correctly represents work performed by me or under my direction in compliance with the "Corner Recordation Act" (70-22-101, et seq., M.C.A.)

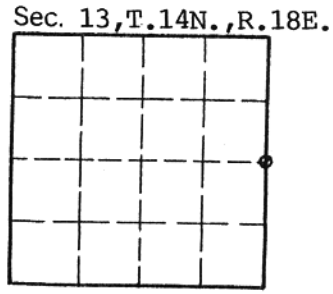
Stewart Nash  
 Signature of Surveyor & Seal

Date: 11-26-93 Reg. No. 5210S

Employer: SELF

Office of Clerk and Recorder, County of FERGUS. This "corner record" was filed for record on MAR 18 1994 was noted on the cross-index plat and is assigned page No. 8, in book No. 4

Shelbie A. Hall  
 County Official



Cross Index No. L-25 T. 14N R. 18E PMM