

DESCRIPTION OF CORNER EVIDENCE FOUND, AND ORIGINAL RECORD (IF KNOWN)

At The Corner Common to Sections 5 & 6, T14N, R19E, & 31 & 32, T15N, R19E P.M.M. Fergus County, Montana, we find no evidence of the original corner stone nor the pit or mounds:

Record: 78.45 Chains

Set a 24" x 12" x 4" sandstone, 18" in the ground for corners to sections 5, 6, 31 & 32 marked with 5 notches

DESCRIPTION OF MONUMENT AND ACCESSORIES ESTABLISHED TO PERPETUATE THE ORIGINAL LOCATION OF THIS CORNER:

On the E and 1 on W. edge, dug pits 18" x 18" x 12" in each section 5 1/2 feet distance and raised a mound of earth 2 feet high, 9 1/2 feet base along side. Date of work: 4-20-80

To perpetuate this corner I set a 5/8" x 2 1/2" rebar with 1 1/2" Alumin cap at the point I believe coincide with existing evidence & local testimony. See affidavits filed. The following R.M. may be

SKETCH, WITH COURSE AND DISTANCE TO ADJACENT CORNERS IF DETERMINED IN THIS SURVEY. (MAY SKETCH OR PASTE REPRODUCTION ON REVERSE SIDE.)

used to locate this corner:

Note that old North Fence line & East Fence line intersect at this position.

A 16" buried water line bears N89°15'54"W 83.32 Feet

A 1 1/2" Al. Cap bears S01°45'14"E 179.50 FT.

See C.O.S. #175.

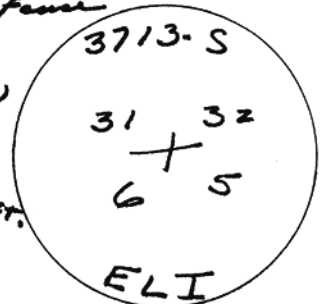


DIAGRAM OF CORNER:

Surveyor's Seal

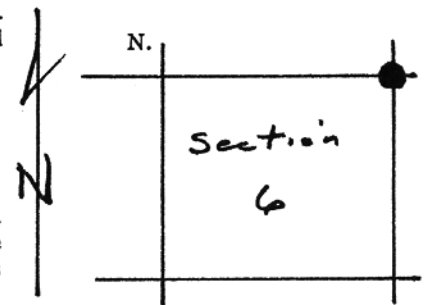


I, _____ certify that the information shown herein is true and correct.

Signature of Ground Party Chief

I, Elden L. Inabnit certify that I have carefully performed or reviewed the work done on the diagrammed corner as reported on this recordation form and approve the same.

Signature of Surveyor



• = Corner recorded on the sheet

3713-S Registration Number

Office of Clerk and Recorder, County of FERGUS

This "corner record" was filed for record on the MAY 22, 1980 day of 1980, was noted on the cross-index plat and is assigned page No. 205, in book No. 1 @ 8AM

County Official

564 pt